

CONNECTIONS

SEE INSIDE

Meanwhile:
Make Every Wait Enjoyable

What's Trending
in Airport Seating

Designing for Flow
and Function



emBARq

Stay powered up before your flight



Designed for productivity and convenience, emBARq is a modern workstation with integrated charging outlets that enhances the passenger experience and elevates public spaces. Available in a wide range of sizes and finishes to suit any environment.

Power where it's needed, designed for the way people travel.

ARCONAS



arconas.com

IN THIS ISSUE

CONTENTS

- 2 Meanwhile: Enjoy the Art of Waiting
- 6 In Conversation with CMP
- 8 Pelago: Inspired by the Nordic Archipelago
- 12 Avro: The Most Versatile Seating Ecosystem
- 14 Trends in Airport Seating
- 16 Lounge on the Go
- 20 Designing for Flow and Function
- 22 Big Solutions for Small Airports
- 25 Complete Support
- 26 Naturally Canadian
- 28 Inspired Iceland
- 30 Fargo Takes Flight
- 32 Miami Nice
- 34 Windy City Welcome
- 36 Elevating the Passenger Experience Across Sea and Land
- 39 Liquid Disposal Made Simple
- 40 Seating and Designers
- 42 Product Profiles
- 51 A Love Letter to the Aviation Industry from Lynn Gordon
- 52 About Arconas



2

Meanwhile brings a welcoming lounge alternative to airport seating, adding style, comfort, and calm to hectic terminals.

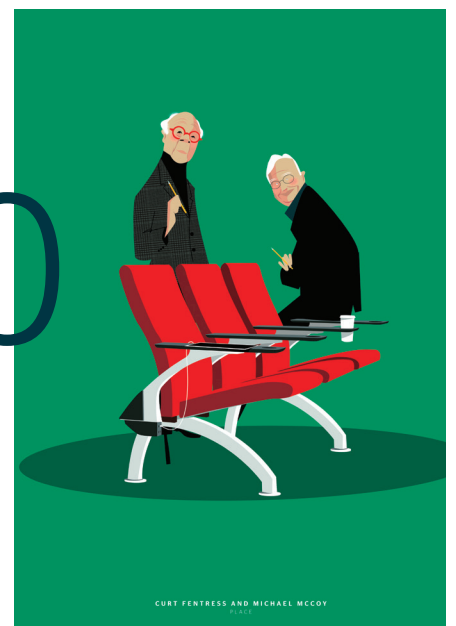


28

The East Wing at Keflavik Airport (KEF) in Iceland has come alive with the full Avro seating collection.

40

Arconas commissioned renowned illustrator Jorge Arevalo to create an illustration series dedicated to Tandem Seating.



Meanwhile

Enjoy the art of waiting



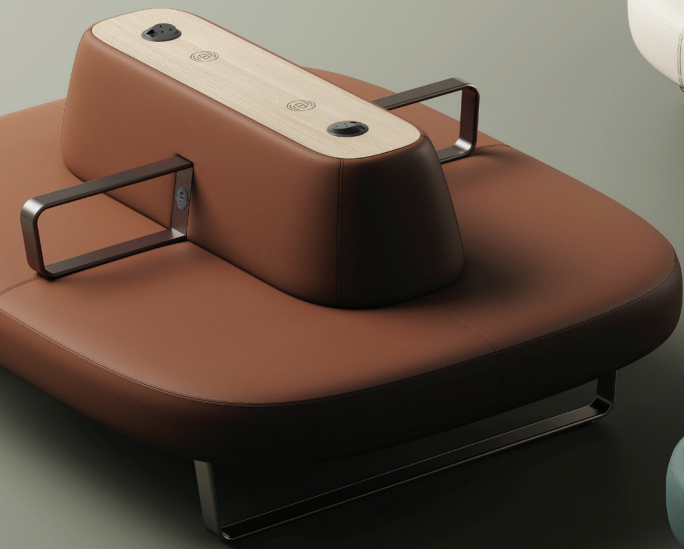
Designed by CMP

Airports today are more than just places to catch a flight—they're busy, lively spaces where comfort and connection matter. That's where Meanwhile comes in.

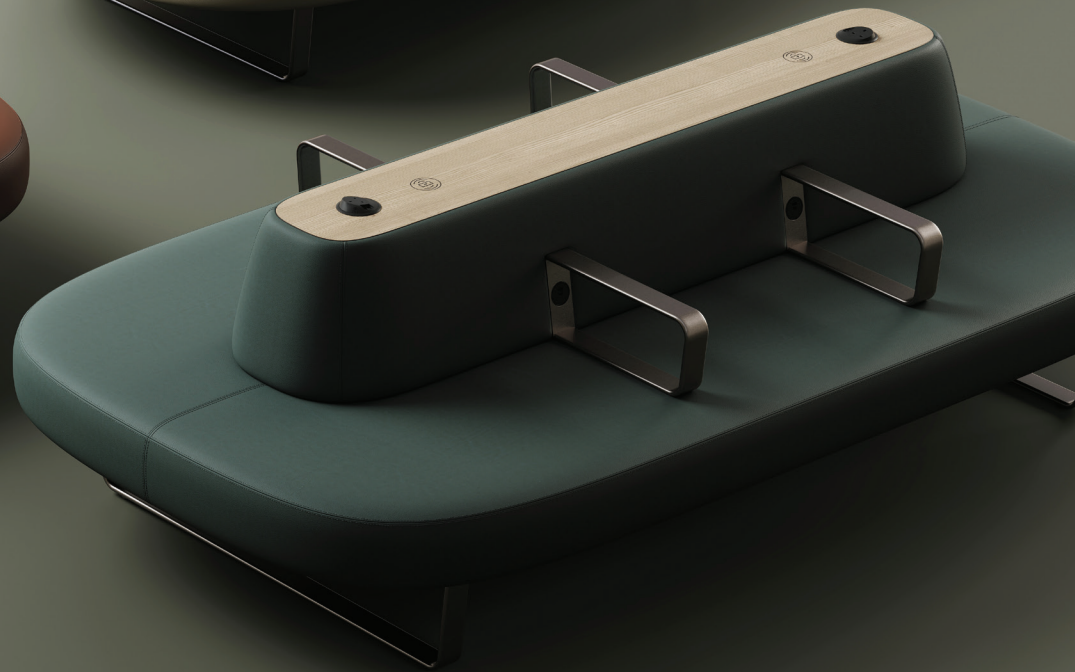


Meanwhile brings a welcoming lounge alternative to airport seating, adding style, comfort and calm to hectic terminals.

Bean



Small



Large

Offered in three configurations—Small (6 seats), Large (8 seats), and a sculptural Bean-shaped option (6 seats)—Meanwhile adapts to diverse layouts and group sizes. The efficiency of standard tandem seating remains, but the experience becomes more inviting.



Meanwhile integrates with existing tandem seating so airports can enhance the space without reducing capacity.



Comfort and convenience define today's travel expectations, and Meanwhile responds thoughtfully. Optional charging modules offer USB-C, AC outlets (including UK and European options), and wireless charging. Flexible armrest choices include standard arms or tablet arms with drink holders, perfect for areas where travelers want a spot for a coffee, snack, or to use their device.

Meanwhile's aesthetic is modern yet approachable, with fabric and finish options chosen for durability in high-traffic spaces without compromising visual appeal.

As airports evolve, Meanwhile is leading the way, bringing together comfort, function, and modern design. It turns waiting into something passengers can actually enjoy and remember. With Meanwhile, the wait becomes part of the journey.

**EXPLORE
MEANWHILE**



In Conversation with CMP

Italian design studio CMP has built its reputation on connecting the past, popular culture, and nature through bold visual ideas. Here, they walk us through the thinking and concepts that inspired Meanwhile.

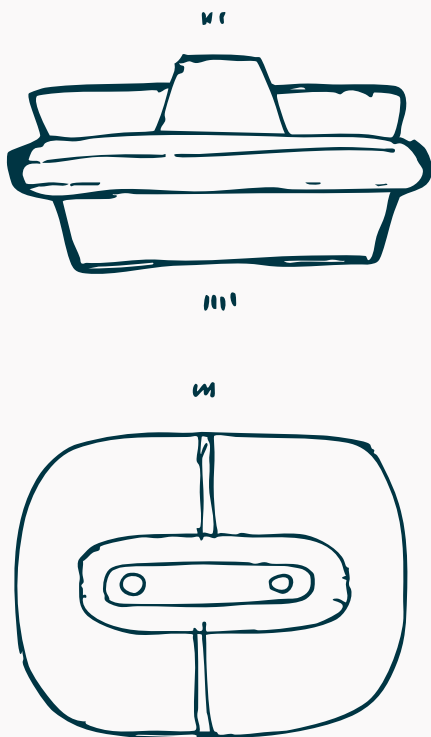


What was the initial spark or inspiration behind the design of Meanwhile, and how did it evolve from concept to completion?

The creative process began with the image of an archipelago of volcanic islands, each island the form of a seat base with a rising backrest, like a small peak. As we refined the concept, the forms softened, the backrest evolved into something between a back and an armrest, and its added depth suggested room for accessory functions. From there came the idea of a removable top cover that could double as a support surface while allowing access to electronic components inside.

When we shared the first model with Arconas, they suggested armrests to define seating. We designed them to echo the sled supports and added outlets to the connecting surface for visibility and accessibility. With these refinements, the project took on its unique character.

We imagined a traveler happy to hear of a flight delay, grateful for more time to enjoy this comfortable seat. That vision gave the project its name: Meanwhile.



How did you balance aesthetics with functionality in Meanwhile, especially knowing it would be used in high-traffic public environments like airports?

A Japanese proverb we hold close says: “Beauty is the consequence of what is right.” For us, this means that caring for people’s well-being—our own and others’—takes priority over chasing aesthetics. When we focus on what works and feels right, beauty often follows naturally as an unexpected reward.

We began by exploring forms and proportions, looking for something that could bring a fresh dimension to airport spaces. This exploration took on meaning when the functional solutions suggested by those forms came to the forefront, guiding the next steps of our design process.

For example, the backrest—initially sketched as the peak on a volcanic island—sparked the idea of function: just as a volcano holds energy within, the backrest could channel electricity. Recognizing that this feature could be central to the project shifted our priorities. From there, the designs and the aesthetics were guided by the idea to include this functionality as effectively as possible.

What role did passenger behavior or psychology play in shaping the design of Meanwhile?

Airports bring together people of all ages, cultures, and backgrounds. Some travel in groups, laughing and talking, while others travel alone—working, catching up with friends, or simply waiting. Some feel excitement, others sadness, but everyone has their own way of passing the time. By focusing on how people move, rest and interact, we landed on the idea that airports need more relaxed, informal seating to compliment traditional tandem seating.

Meanwhile’s inviting shape encourages passengers to relax and enjoy the simple act of waiting.

What do you hope passengers feel or thinking after spending time in the terminal with Meanwhile?

Meanwhile takes inspiration from a sofa, with soft lines and a generous seat that suggests the comfort of a living room or a relaxed social gathering. Within the vastness of an airport, each piece creates a more intimate space, like an island where passengers can pause amid the flow of the terminal. Our hope is that everyone who sits on Meanwhile feels the care and attention that went into its design.



Pelago

Inspired by the Nordic Archipelago

What if public furniture could turn open space into a connected landscape, one unified design instead of many separate parts?

That question guided the creation of Pelago, the newest modular seating solution from Green Furniture Concept. Inspired by the natural harmony of the Nordic archipelago, Pelago invites designers to create islands of calm within the bustling life of public environments.



Each element reflects the Scandinavian design ethos of the company: simple, tactile, and human-centered.





Developed entirely in-house and guided by Green Furniture Concept's Internal Circular Design Principles, Pelago was conceived as a new standard for public seating, one that balances architectural presence with playful modularity, while staying true to its design philosophy of soft, sculptural forms and durable materials.

The team set out to solve a challenge seen across many public interiors: fragmented or bespoke furniture that fails to connect visually or functionally. Pelago offers an alternative, a cohesive, modular solution made from durable, circular materials rather than short-lived custom builds.

With eight intuitive modules, including seating, planters, and recycling bins, Pelago makes it easy to design anything

from compact clusters to anchored layouts that define large public areas.

Like building blocks for designers, the concept turns complex spatial planning into a creative, intuitive process.

Each element reflects the Scandinavian design ethos of the company: simple, tactile, and human-centered. Double-curved contours, rounded edges, and no visible bolts or screws give Pelago its sculptural calm. Crafted from 100% certified wood and recycled aluminum, it merges natural warmth with timeless durability.

Behind the design lies a clear sustainability story. Every component is replaceable, maintainable, and designed for

disassembly, from wood treated with zero-VOC Rubio oil to 95% pre-consumer recycled plastics. Lightweight yet robust, Pelago endures the demands of public use while maintaining its refined aesthetic.

Pelago represents the next step in Green Furniture Concept's mission to create places that matter with a unified, modular, and enduring solution that helps shape environments where people naturally pause, gather, and connect.

Arconas is the exclusive distributor of Green Furniture Concept to transportation terminals in the Americas.

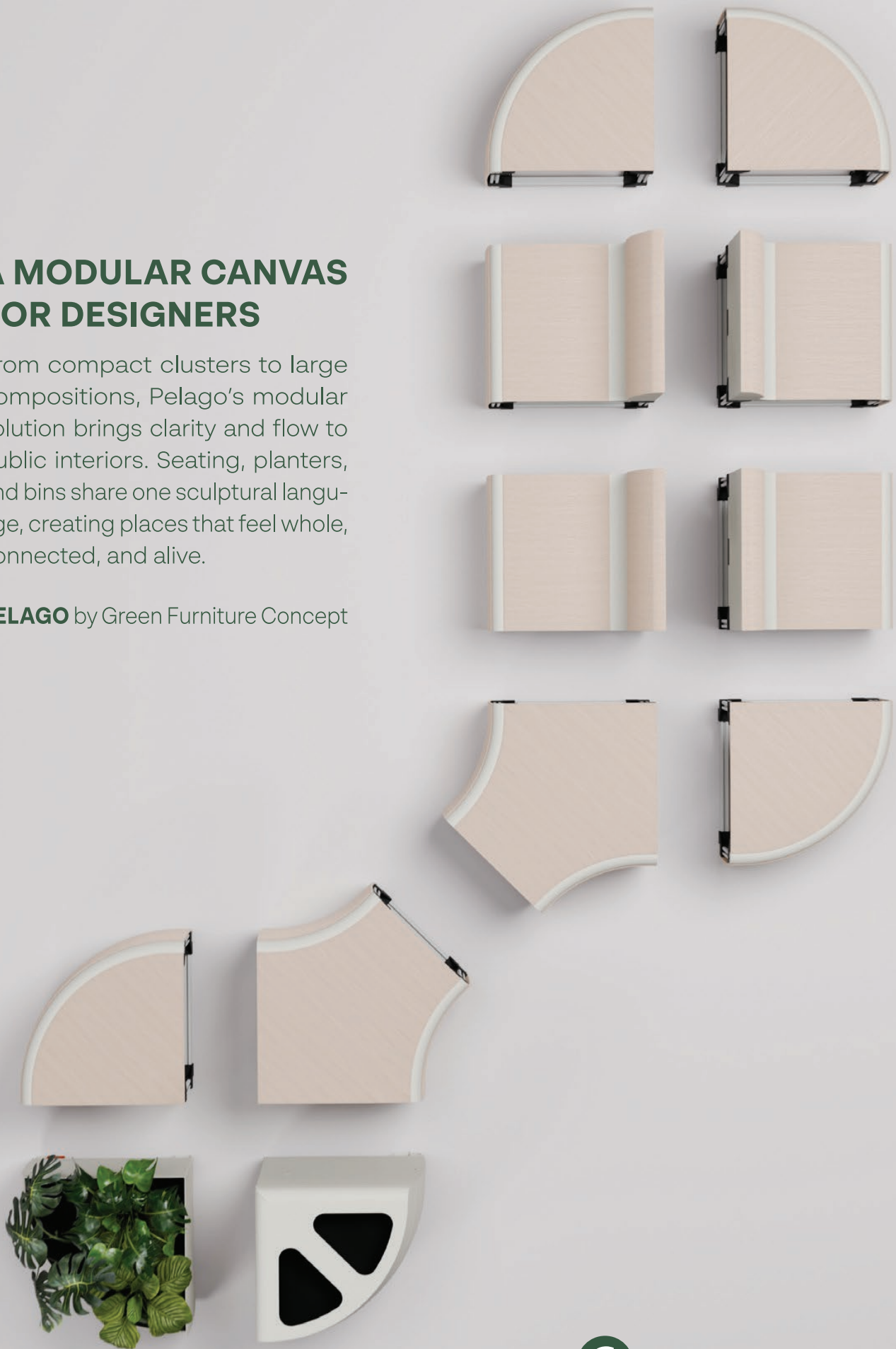


EXPLORE
PELAGO

A MODULAR CANVAS FOR DESIGNERS

From compact clusters to large compositions, Pelago's modular solution brings clarity and flow to public interiors. Seating, planters, and bins share one sculptural language, creating places that feel whole, connected, and alive.

PELAGO by Green Furniture Concept





Avro

The most versatile seating ecosystem for today's airports

Airports come in all shapes and sizes, and so do their seating needs. As the most versatile seating ecosystem available, Avro gives airports the freedom to design spaces that work for every kind of traveler.

Designed by Pearson Lloyd



reddot winner 2023



Avro brings together a full range of seating styles within one cohesive system, from durable shell and upholstered seats to recliners for rest and lounge options that provide extra personal space. Lounge seating and benches provide a luxurious feel, while the wood bench introduces warmth and a natural touch.

At the heart of Avro’s adaptability is its universal beam system, a smart structural solution that lets airports easily install, remove, or replace any seat type. This makes Avro straightforward to maintain, clean, and reconfigure as needs evolve, with no specialized tools or training required. The intuitive design means servicing is minimal, while performance and appearance remain consistently high.



Whatever the setting calls for, Avro meets it with ease.

With elegant design, thoughtful engineering, and integrated power, Avro is more than just seating. Its adaptability helps terminals turn busy waiting areas into relaxed, lounge-like spaces that elevate comfort and enrich the passenger experience.



Trends in Airport Seating

Seating options, universal access, and a stronger sense of place are reshaping today's terminals into welcoming, connected and memorable environments for travelers.



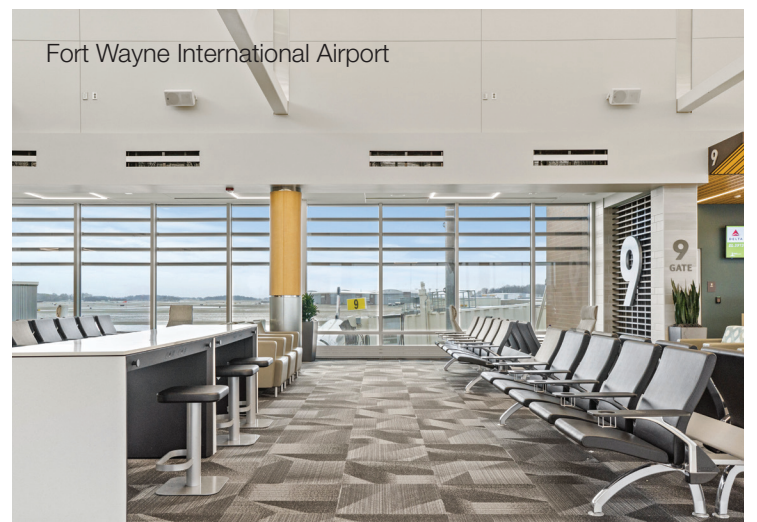
Newark Liberty International Airport

More Ways to Sit

A wider mix of seating is reshaping today's waiting areas, creating dynamic and inclusive environments where all travelers, regardless of ability or preference, can choose what best fits their mood, schedule, and journey.

Pairing classic tandem seating with soft lounge pieces or wood options gives passengers the flexibility to sit, work, or relax in the way that suits them best.

With Arconas' broad range of seating and furniture, terminals can design layouts that blend multiple seating types to serve every passenger comfortably and accessibly.



Fort Wayne International Airport



Eagle County Regional Airport

A Sense of Place

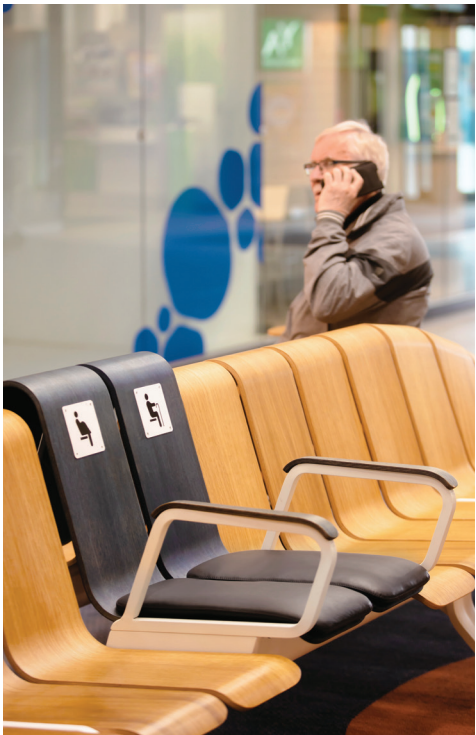
In today’s social media-driven world, memorable, photogenic moments encourage passengers to share their experience, turning airports into part of the story rather than simply a stop along the way.

Through art installations, color palettes, carefully chosen materials, and layouts inspired by surrounding landscapes or architecture, airports use design to create a true sense of place. These spaces reflect the identity, culture, and environment of their location, giving travelers a more meaningful connection to where they are.

Furniture that supports or enhances this approach helps extend that sense of place throughout the terminal, creating environments that feel intentional, cohesive, and tied to the region.



Newark Liberty International Airport



Orlando International Airport

Universal Access

Airports are creating spaces that are easily accessible for people of all ages and abilities. This includes PRM (people with restricted mobility) and ADA-compliant seating, integrated alongside standard options to make terminals more comfortable and welcoming for everyone. Clear layouts, inclusive seating, and thoughtful amenities help make travel more comfortable and less stressful for everyone.

Lounge on the Go

In airports and passenger terminals, lounge furniture plays an essential role in turning high-traffic environments into places where passengers can pause, rest, and reset.



With a deep understanding of airport operations, and through our partnership with Keilhauer, a leader in lounge furniture design, Arconas has a wide range of lounge options designed to support comfort throughout the passenger journey.

“Lounge furniture invites people to settle in, breathe, and feel supported,” says Maggie Keilhauer, Associate Creative Director at Keilhauer. “Travel can be tiring, unpredictable, and emotionally charged. Intentional lounge seating helps reduce friction in those moments, offering a sense of ease and familiarity that can help the airport feel less like a thoroughfare and more like a place that cares for people.”

When lounge furniture is intentionally incorporated, it helps people feel grounded in otherwise transitional environments. How furniture is designed and arranged can signal pause or activity, privacy or connection. This flexibility allows airports to create different experiences within a single terminal.

“Travelers move through airports with different needs,” Maggie says. “Some are working, some are waiting, some are navigating mobility devices, and others are managing families or long journeys. Designing for that range means prioritizing intuitive comfort, clear access, and furniture that feels welcoming rather than prescriptive.”



“““

True comfort has to last, especially in high-traffic environments like airports.

Soft seating in fun shapes, such as Arconas' Connex, Star Bench or Zigzag offer relaxed seating and modular, flexible configurations that accommodate different group sizes and shifting passenger flows. Placing them in unexpected areas such as food courts or concessions areas balance creativity with practicality.

KEILHAUER

DESIGN THAT SUSTAINS



Beyond comfort, lounge furniture also contributes to the overall character of a terminal.

“Visual calm matters,” Maggie says. “When furniture is well made, comfortable, and visually balanced, it contributes to a more positive experience for both travelers and the spaces they move through.”

Refined material selections, considered finishes, and well-crafted details also bring an elevated feel to public spaces, signaling quality, care, and intention without sacrificing durability or performance.

Arconas' Avro seating ecosystem includes lounge seating and benches that incorporate the lounge feel within a tandem seating system. The result is seating that feels welcoming and polished, helping terminals strike a balance between efficiency and warmth.



Seating that prioritizes quiet comfort invites travelers to step away from the stress that travel can bring. Lounge chairs with high backs and side panels, like Talk and Lull from Keilhauer, offer acoustic benefits, creating pockets of calm by reducing noise and visual distractions. These spaces give passengers a place to relax, focus, or simply tune out for a while.

Ultimately, a well-designed terminal supported by carefully placed lounge furniture shapes how people experience the airport as a whole.

Thoughtful lounge seating does not just fill space; it leaves a lasting impression of care, clarity, and connection.



Designing for Flow and Function

Arconas' Product and Design Team brings together expertise in passenger flow, comfort, and operational efficiency. From planning layouts to selecting products, materials, and placement, the team creates spaces that are both thoughtful and welcoming.



When planning airport spaces, what are the key factors you consider to balance passenger flow, comfort, and operational efficiency?

Designing airport furniture layouts is a balance between movement and pause. We start by studying the areas where passengers flow through the space, where they rush, where they wait, where they naturally gather. From there, we use the furniture placement to create zones that encourage movement or offer areas of rest. High-traffic areas such as corridors and boarding gates require durable, easy-to-maintain seating that keeps people moving effortlessly. Lounges, food courts, and dwell zones benefit from varied seating, ergonomic options, and modular layouts that invite travelers to rest, recharge, and connect.

Comfort and efficiency go hand in hand. When everything feels natural and effortless, passengers feel more relaxed, and the space works better for everyone.



Airports have unique challenges, such as high traffic, security requirements, and diverse passenger needs. How do these considerations influence your spatial design decisions?

Security is always a priority, so furniture placement is planned to avoid blocking sightlines or creating hidden areas. We focus on how people flow through the space and include clear circulation paths and flexible configurations that can adapt to changing passenger volumes. We also consider ADA requirements where possible, incorporating accessible seating options, appropriate clearances, and layouts that support passengers of all abilities, ages, and mobility levels. This approach helps ensure spaces are usable and comfortable for everyone moving through the terminal.

What are some features you consider when choosing products for layouts?

We usually start with an understanding of the client's preferred products, the area size, and the seating capacity.

We pay close attention to how people use the space. For areas with shorter wait times, we might recommend more upright seating or benches that support quick turnover. In zones where passengers are likely to spend more time, such as international gates, we'll incorporate recliners or soft seating for greater comfort.

Our designers are skilled at SolidWorks, AutoCAD, Sketchup, and Adobe Design Suite, which helps us explore multiple scenarios, anticipate challenges, and recommend solutions that balance aesthetics, function, and operations. With our expertise in spatial design and product knowledge, we're often able to suggest options that the client may not have thought about or considered.

Material selection is also key. We recommend durable, easy-to-maintain finishes that perform well in high-traffic environments. If a client has a specific aesthetic in mind, we can suggest materials and finishes that achieve that look while maintaining the durability required for that space.

Our main goal is to help create spaces that can grow and adapt, while still feeling comfortable and human no matter how the airport evolves.



Big Solutions

for Small Airports



Southern Wyoming Regional Airport

Small and regional airports play an essential role in connecting communities, yet they face challenges that larger airports often do not. Limited space, tight resources, and the need for every square foot to work harder make planning and design especially important. At the same time, passenger expectations continue to rise. Travelers want comfort, convenience, and technology at their fingertips, no matter the size of the terminal.

That's where Arconas comes in.

Arconas helps smaller airports deliver a first-class experience for their space while keeping the process simple from layout to installation.



Missoula Regional Airport



Southern Wyoming Regional Airport



Columbia Regional Airport



Asheville Regional Airport

Our wide range of furniture options allows smaller airports to create a terminal that reflects its unique character, on its own scale. With full project management to keep everything running smoothly, a simplified procurement process that saves time and effort, and solutions that can meet any budget, Arconas ensures airports of all sizes are not just getting quality furniture but a trusted partner.

Even the smallest airports can make a big impression, and Arconas is there to help every step of the way.



AUWEKO®

The Litter and Recycling Bin Specialists
www.auweko.de

Complete Support

Arconas is there for you before, during, and after project completion

When most people think of Arconas, they think of its wide range of furniture for airports and passenger terminals. But our work goes beyond furniture. From the moment an order is placed to long after installation, we support our clients every step of the way, with project management services designed to simplify the process, handle the details, and deliver results clients can rely on.

Project Management

Our project management team takes the time to understand what clients need and turns those ideas and concepts into a finished solution. Dedicated project managers coordinate between teams, partners, and suppliers, ensuring that production schedules, delivery, and installation align. This allows clients to focus on their goals rather than logistics. With clear communication and fewer surprises, projects are completed on time, as planned, and to Arconas standards.

Arconas' project managers are PMP-certified professionals with years of experience. They stay current with industry best practices, giving clients confidence that they'll always receive reliable, informed guidance.

Training

Once furniture is installed, the team trains on-site staff on how to maintain it. With guidance from the project managers, installers learn the correct methods for assembling and handling Arconas products. This reduces errors, avoids delays, and ensures installations meet the company's standards. This level of support helps extend the life of the products and reinforces the long warranties Arconas offers. When maintenance staff and installers know exactly what to do, the furniture remains durable and reliable for years.

Ongoing Support

Support from Arconas doesn't end once installation is complete. If any issues arise, the service team is ready to help. They know the products inside and out, allowing them to solve problems quickly. Many clients return to Arconas again and again because they know we'll be there when needed.

From planning to installation to long-term service, Arconas aims to take the stress off clients and deliver products that perform beautifully for years. With expertise, proven processes, and a commitment to care, we provide more than furniture—we provide peace of mind.





YLW - KELOWNA, BC, CANADA

Naturally Canadian

Warm wood tones, light-filled spaces, and a clear sense of place define the new departures lounge at Kelowna International Airport.

8





Recognized as a UNESCO world gastronomic region, the Okanagan region of British Columbia draws visitors from around the globe for its food, wine, and cultural richness. At **Kelowna International Airport**, the departures lounge reflects this global reputation, welcoming travellers into a space that embodies the natural beauty, heritage, and character of B.C. and the Okanagan. Designed with an international audience in mind, the space offers an experience rooted in quality, hospitality, and attention to detail from the moment passengers arrive at the gate.

Avro shell tandem seating integrates into the architectural language of the space, supporting efficient passenger flow while delivering a premium, VIP level experience for travellers throughout the terminal. Powered tablet drink holder arms provide comfort and convenience, giving passengers a place to charge devices, set down refreshments, and stay connected as they wait.

Avro wood benches echo the terminal's warm, natural aesthetic which features architectural elements crafted from B.C. mass timber.

“”
To complement the environment, our Avro seating system was a natural fit.

We're proud to be part of this beautiful terminal that strengthens an important Canadian gateway while celebrating the people, place, and natural environment of the region.





KEF - KEFLAVÍK, ICELAND

Iceland Inspired

Avro's full seating ecosystem comes together at Keflavík International Airport, blending versatility, comfort, and Iceland-inspired design.



The **East Wing at Keflavík Airport (KEF)** in Iceland has come alive with the full Avro seating collection, where tandem, lounge, and wood benches come together in one cohesive design story. The result is a showcase of Avro's versatility, proving why it's the most versatile seating ecosystem on the market.

Inspired by Iceland's rugged mountain landscapes, the space combines soft neutrals in the shell seating and wood tones of the Avro Bench, with accents of burnt orange in the lounge seating to create a look that feels both grounded and vibrant. The addition of Green Furniture Concept's Nova C and Leaf Lamp tree add softness and help to create a unique sense of place.

Guided by open communication, transparency, and a continuous exchange of ideas, the team delivered an outcome that feels both thoughtful and impactful. "The collaborative approach between Arconas, our client Isavia, and Nordic Architects, is clearly reflected throughout Keflavík Airport," says Lucia Kortscheff, Arconas' Global Account Manager.

Arconas is pleased to see KEF among the first airports to embrace and believe in Avro. More than just seating, Avro embodies a new approach to shaping the passenger experience, offering flexibility, comfort, and the freedom to create a lasting impression.



“”

The rich mix of products, materials, and colours creates an authentic sense of place that unmistakably reflects the spirit of Iceland.



FAR - FARGO, ND, USA

Fargo Takes Flight

A variety of furniture at Fargo Hector International Airport provides comfort and flexibility to enhance the passenger experience.

One step into the new terminal concourse at **Hector International Airport**, in Fargo, ND, and you're greeted by warmth, natural light, and a sense of openness. Throughout the terminal, a wide variety of Arconas furniture was chosen to reflect the airport's vision for an inviting, elevated passenger experience.

In the passenger boarding lounges, Flyaway seating with inPower Flex 3 keeps passengers comfortable and connected, offering supportive seating with power access right where it's needed. emBARq workstations and InPower Stools give simple, practical places to work or recharge. In the concessions area, Nevada Chairs paired with 4Share Tables create a relaxed setting to enjoy a meal, catch up on emails, or unwind before boarding.



Throughout the new terminal, a curated mix of Keilhauer lounge seating—including Settle, Talk, and Boxcar—combined with Hop Benches, Star Benches, and Twenty-two ottomans, offers travelers a variety of ways to sit, gather, or spread out. The result is a flexible seating that adapts to different travel styles, whether someone is seeking a quiet moment alone, a casual conversation, or a comfortable spot to focus. Connex modular lounge seating, along with Flyaway and Bernù Benches, provides additional casual, short-stay seating throughout the concourse. Rux waste bins are also strategically placed to support convenient waste management and cleanliness.



A dedicated sensory room, softly lit and furnished with high-back Lull lounge chairs, provides a calming retreat for travelers who may feel overwhelmed while flying. Nearby, the children's play area features Fiore soft seating, creating a safe and playful environment that encourages movement and imagination.

Together, these thoughtfully integrated furniture solutions enhance the overall passenger experience while supporting the airport's long-term growth. Arconas is proud to contribute to this next phase for Fargo and its expanding community.



MIA - MIAMI, FL, USA



Miami Nice

At Miami International Airport Terminal E Satellite, the city's bold sense of color and culture comes through in every seating detail.

Nowhere is the connection between a city and its airport more evident than in Miami—a destination defined by bold style, vibrant culture, and warm hospitality. That same spirit now carries through the seating at **Miami International Airport's** Terminal E Satellite.

Arconas worked in close collaboration with the airport team to design a space that brings together a considered mix of materials, colours, and products. The result is an environment that is highly functional yet emotionally engaging, capturing the energy and character of Miami.



Avro serves as the focal point of the space, specified in a multicoloured palette inspired by the tones of the beach. Complementing this, Green Furniture Concept's Nova C introduces wood elements that add a subtle nod to the relaxed feeling of a beach chair. The colourful Avro shell seating delivers a fresh, modern presence, while the sculptural flow and warm wood tones of Nova C add movement and character.

Paired with the everyday practicality of emBARq tables and inPower stools, the area becomes more than a place to wait. It feels welcoming, vibrant, and distinctly Miami.

Terminal E shows how thoughtful furniture and design can transform an entire space. By mixing style, comfort, and functionality, the terminal now offers a passenger experience that's as colorful and inviting as the city itself.





ORD - CHICAGO, IL, USA

Windy City Welcome

Serving millions of travellers each year, Chicago O'Hare International Airport is creating spaces that prioritize clarity, comfort, and the passenger journey.

As one of the world's busiest airports, **Chicago O'Hare International Airport** is embracing change to create a more modern, passenger-focused experience.

In Terminal 5, Bernù Aero tandem seating equipped with inPower Flex 3 outlets, and emBARq workstations with inPower Stools, offer comfort and convenient charging for today's connected traveler. The seating's blue upholstery, accented with pops of red, brings a lively energy to the bright terminal. Complementing this vibrancy, Green Furniture Concept's Nova C benches and planters introduce soft wood tones that add warmth and a touch of nature to the modern space.



USM information desks provide a welcoming point of contact, combining functionality with clean design to enhance wayfinding and customer service, while branded Auweko Temptation waste bins make waste disposal easily accessible.



“”

At O'Hare, Arconas' diverse range of furniture helps make every journey feel a little more grounded.



In the iconic Rotunda, travelers can unwind while taking in sweeping airfield views from a wide range of Arconas lounge seating. Star Benches, Zigzag soft seating, and Twenty-twenty ottomans offer soft seating with a touch of playfulness. Heller Fortune Chairs and Arconas 4Share tables provide comfortable areas to work or eat. Meanwhile, Green Furniture Concept's Nova C and Leaf Lamp Tree infuse the space with biophilic design elements, creating an inviting atmosphere where passengers can relax and recharge.

Elevating the Passenger Experience Across Sea and Land

From modern cruise terminals to bustling bus and rail stations, designers are rethinking how furniture can shape the passenger experience—turning once utilitarian spaces into welcoming environments that reflect the mode of travel and connect with the journey ahead.



Morelli Benches
PortMiami Terminal A



Nova C
Port Everglades Terminal 25



**EXPLORE
CRUISE**





Whether at sea or on land, the trend is clear: furniture design is helping transform transit environments into destinations of their own.

Today's cruise terminals are evolving into architectural statements that shape the passenger journey from the moment travelers arrive, offering a sense of what awaits onboard. As the first chapter of the vacation or journey, the terminal has become an extension of the experience, where design, materials, and furnishings work together to create an immersive environment before passengers even step aboard.

Many cruise lines incorporate statement seating and refined finishes to evoke a relaxed, resort-like atmosphere, while others maintain traditional tandem seating for efficiency and reserve plush, high-end furnishings for VIP or suite-class guests.

Spacious lounges, curated seating areas, and welcoming materials give passengers a place to take in the anticipation of the journey ahead, creating a smooth transition from arrival to embarkation and building excitement for the adventure that follows.



Bernü Aero
Hong Kong West Kowloon Station

“”

These modernized terminals and stations do more than move people — they set the tone for the journey ahead.



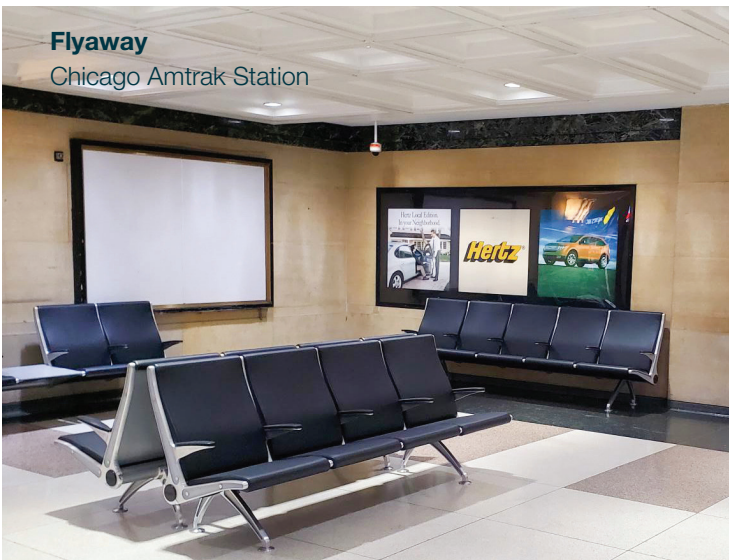
USM Counters
Portsmouth International Port



Bernù
Springfield Union Station

For bus and rail stations, many trace their roots back decades. While once purely functional, these spaces are now being upgraded to meet modern expectations and aesthetics. New furniture collections blend durability with comfort, encouraging passengers to linger rather than rush. Warm finishes, accessible seating configurations, and integrated charging capabilities are redefining what it means to wait for a train or bus.

As cities develop multi-modal transit hubs where buses, trains, bikes, and rideshares converge, the need for flexible furniture that supports intuitive movement becomes essential. Open layouts and strategic and adaptable seating options enable travelers to rest, recharge, or prepare for the next leg of their journey without disrupting passenger flow.



Flyaway
Chicago Amtrak Station



Nova C
London Bridge Station

By reimagining how travelers move, wait, and interact, designers are crafting public spaces that make every trip, from daily commutes to dream vacations, on land or at sea, feel a little more comfortable and connected.



**EXPLORE
BUS & RAIL**

Liquid Disposal Made Simple

With the right liquid disposal in place, airports can reduce waste and improve the passenger journey.



W-Series

In today's airports, where efficiency and sustainability matter, proper liquid disposal helps keep operations smooth, supports safety, reduces waste, and shows travelers that the airport is committed to a responsible, passenger-focused experience.

Clear and accessible liquid disposal stations help checkpoints run efficiently, allowing passengers to quickly discard items, reducing bottlenecks and easing stress for both travelers and staff. Maintenance teams can handle liquids cleanly and safely, avoiding spills and complications from liquids being tossed into regular waste bins.

Arconas' liquid disposal systems offer flexible solutions that balance function, durability, and aesthetics.

The W-Series Disposal system provides a more refined look with a Phenolic body and Solid Surface top. The W-Series can hold up to 75L of liquid and can be configured with additional compartments for other waste or recycling options.

Auweko's Dual Liquid Disposal features a classic stainless steel construction that can funnel away up to 50L of liquid with a separate bin for empty bottles.

By integrating dedicated liquid disposal systems, airports can create a cleaner, smoother, and more sustainable terminal environment where every detail supports a better experience for travelers and staff alike.



Auweko Dual Liquid Disposal



EXPLORE
LIQUID DISPOSAL

Seating & Designers

From their clean lines, balanced proportions, and purposeful design, Arconas tandem seating can be considered works of art. To highlight this and to celebrate the designers behind them, Arconas commissioned renowned illustrator Jorge Arevalo to create an illustration series dedicated to them.

Jorge's illustrations offer a fresh perspective on the forms and details of our furniture—bringing the designs and the people who shaped them into focus.

We spoke with him about his creative approach, the influences behind the series, and what he hopes viewers take away from his art.

Arconas was inspired by your “Chairs & Architects” collection. What inspired you to create that series?

I love architecture and furniture design, so it was inevitable that “Chairs & Architects” would be part of my

imagination. In this series, I wanted the subject to connect with their creation, to observe it, touch it, and humanize it.

Tell us about your style and creative process.

I like to approach each piece with as little information as possible, but I want that minimalism to translate into fluid lines that bring rhythm and elegance to my illustrations.

My work process begins with sketching on paper and then I finish the piece digitally. The pencil strokes always provide the perfect rhythm that defines the illustration. The key is to never



PLACE

CURT FENTRESS & MICHAEL MCCOY

start with a blank page; I always begin with a background color. When working digitally, I can move elements around with a designer's mindset, like composing a collage of shapes and proportions.

What do you hope people feel or take away when they see your illustrations?

I hope people can experience my illustrations like they're getting a peek into a different world—like looking through a window at Casa Malaparte or peeking into a jazz club in Harlem.



About Jorge Arevalo

Jorge Arévalo is a Spanish illustrator whose work has been featured in leading international publications including *The New Yorker*, *Vanity Fair*, *Rolling Stone*, and *Esquire*. Known for his distinctive character-driven style, he has received multiple awards and has been named one of the 100 best active illustrators worldwide. Arévalo is the author of several acclaimed books, and his work has been exhibited and published worldwide.

Jorgearevalo.com | [@jorgearevalographic](https://www.instagram.com/jorgearevalographic)



FLYAWAY
DOUG BALL



MEANWHILE
CMP



BERNU AERO
DAVIDE TONIZZO



AVRO
PEARSON LLOYD

Tandem Seating



PLACE ↓

The Place tandem seating system blends comfort, practicality, and refined style.

Each seat offers integrated power and USB ports, generous tablet arms, drink holders, and under-seat storage—providing travelers with personal space to work, read, or relax in comfort.

With Place, every seat is the best seat in the house.



← BERNÙ AERO

Bernù Aero is a high-performance tandem seating system designed for high-traffic environments such as airports, passenger terminals, transportation hubs, and other public spaces.

Its distinctive curved or straight beams introduce dynamic visual movement and spatial rhythm, adding both function and design interest to any waiting area.

FLYAWAY →

Flyaway combines elegant design with exceptional durability. Its clean, graceful lines complement a robust structure ideal for high-impact settings.

Ergonomically contoured lumbar support, a taller backrest, and substantial cushioning ensure superior comfort for extended wait times in busy terminals and public areas.



EXPLORE
TANDEM

Benches



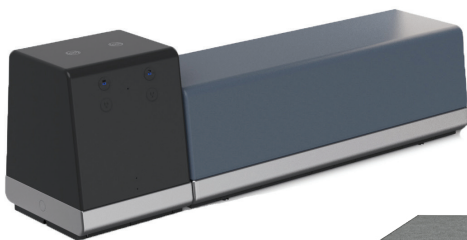
BERNÙ BENCH ↑

Bernù Bench is a finely-crafted indoor bench that can be arranged with other Bernù seating variations, or as a standalone piece, to create dynamic and inviting waiting areas.

Bernù Bench is available in hardwood slats or upholstery.

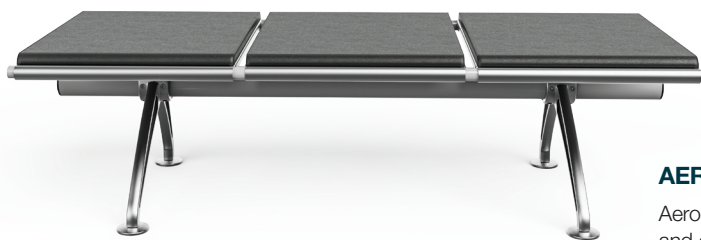
HOP BENCH ↓

The Hop Bench is a high-performance bench featuring plush padding for a comfortable seating experience and a robust structure to withstand high-impact spaces. Combined with the Surge Power Station, Hop Bench is suitable for a variety of areas and public spaces.



MORELLI BENCH →

The Morelli bench's elegant and timeless design visually enhances public spaces. A choice of materials, widths, and finishes allows the bench to respond to the unique needs of each environment, both indoors and outdoors.



AERO BENCH ↓

Aero by Sellex is suitable for indoor or outdoor use and can be customized with upholstered pads, making it adaptable to many settings and spaces.

FLYAWAY BENCH ↑

The Flyaway Bench offers a quick, comfortable rest in transitional public spaces and helps maintain clear sight lines. Durable and timeless, it comes in 2- to 5-seat configurations and can be finished with vinyl or leather upholstered pads.



CONNEX BENCH ↑

Designed for busy public areas, Connex bench is a versatile choice for both large or small spaces where people come together. The Connex Bench, available in curved and linear configurations, can be integrated with Connex seating to create an array of unique configurations.



EXPLORE
BENCHES





Make it yours with USM

The iconic USM Haller modular furniture system allows endless customization, creating elegant solutions for all aviation sectors in timeless form and function.

airport.usm.com



Modular Counters



USM Airportsystems' modular counters offer the flexibility to reconfigure layouts, adapt to shifting passenger volumes, and maintain furniture with minimal waste or disruption.

Crafted from high-quality, fire- and damage-resistant steel, the USM Haller system uses a simple framework of tubes, connectors, and panels. Its modular design supports countless configurations that can be updated or expanded over time, delivering durable, timeless furniture for a wide range of environments.



Boarding Pass Control



Information Counters



Mobile Kiosks



Gate Counters

EXPLORE
MODULAR COUNTERS



Tables, Chairs & Stools



4SHARE TABLES ↑

Featuring tables of various sizes, heights, and uses, 4Share Tables effortlessly adapt to any environment, ensuring the utmost in comfort and convenience, and are designed to complement any of our lounge and casual seating options.

EMBARQ →

emBARq is a sophisticated yet functional work surface and charging hub offering comfort and convenience for both passengers and the general public.



INPOWER STOOL ↓

Experience comfort and durability at any table or bar with the inPower Stool, designed to handle busy waiting areas. inPower Stool lets you sit comfortably at any table and bar and was built to withstand the rigors of high traffic waiting areas.

BARI STOOL →

The Bari Stool is the ideal seating companion for bustling airport terminals and busy public waiting zones, designed to effortlessly handle the demands of heavy use.

ALSO ↓

Also dining chairs from Keilhauer are lightweight and comfortable, featuring a tubular steel frame and perforated plastic seat back and seat, for easy maintenance.



LOON ↑

Inspired by nature, the Loon dining chair from Keilhauer features graceful arcs and sculptured forms.



EXPLORE
TABLES, STOOLS & CHAIRS

Waste & Recycling Bins



DESIGNED TO COMPLEMENT ↑ EVERY SPACE

Customizable finishes, graphics, and branding allow bins to blend seamlessly into the terminal's design language.



ENHANCED ↑ SECURITY AND SAFETY

Tamper-resistant features, transparent panels, and optional fire extinguishers support airport safety requirements.

HIGH TRAFFIC, HIGH PERFORMANCE ↓

Our waste and recycling bins are built from durable, high-quality materials like stainless steel, giving them the strength to handle constant use and frequent cleaning. Outdoor options with weather-resistant finishes and protective hoods to keep contents covered in the elements.

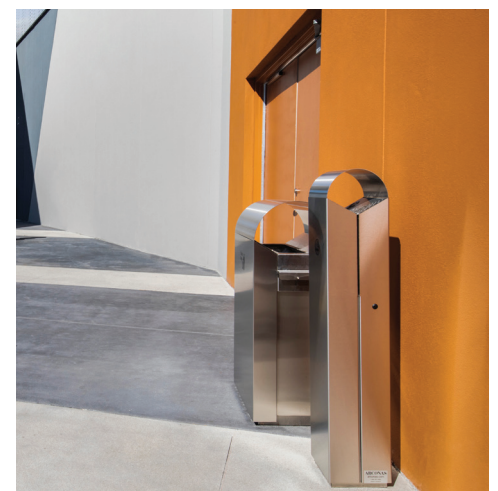


FLEXIBLE, EFFECTIVE SORTING ↑

Multiple stream configurations with easy-to-understand decals help passengers sort waste correctly.

AUWEKO: EUROPEAN DESIGN, ↓ GLOBAL PERFORMANCE

Arconas partners with Auweko, a global leader in stainless steel waste systems known for sleek European design and long-lasting durability. Trusted in airports worldwide, Auweko bins combine strength, sustainability, and a timeless aesthetic.



EXPLORE
WASTE & RECYCLING



Heller

Fortune Chair by JUMBO

www.hellerfurniture.com | [@hellerfurniture](https://twitter.com/hellerfurniture)

© 2026 Heller, LLC

Outdoor

Crafted with style and resilience in mind, our outdoor furniture selections are designed to endure challenging weather conditions and high-traffic environments.



MORELLI BENCH ↑

The Morelli Bench in perforated metal offers versatility for both indoor and outdoor use.

HELLER FURNITURE →

Heller Furniture is built on the belief that exceptional design should be accessible to everyone, combining innovative manufacturing with uncompromising quality to create timeless, practical, yet unexpected. Made in the USA, suitable for both indoors and outdoors and recyclable, Heller Furniture is the true meaning of modern.



← **WASTE BINS AND ASHTRAYS**

Arconas offers a comprehensive range of durable waste bins and ashtrays, specifically designed to withstand outdoor environments while keeping public spaces clean and functional.



← **AERO BENCH BY SELLEX**

AERO's simple yet innovative design allows it to integrate into all type of spaces. Constructed from aluminum and stainless steel, AERO seamlessly transitions between indoor and outdoor environments.

EXPLORE
OUTDOOR



AERO by **Sellex**



Minimalism, elegance, comfort and versatility, designed to withstand the elements and the passage of time. Discover AERO.

Exclusively distributed in North America by **ARCONAS**



arconas.com

A Love Letter to the Aviation Industry

By **Lynn Gordon**, Vice President
of Business Development, Arconas

After almost four decades in aviation—and 25 of them with Arconas—I’ve learned that careers aren’t defined by a single role or company, but by the people, challenges, and moments that stay with you long after the projects are complete. On March 31, 2026, I will retire from Arconas, closing a chapter that has shaped not only my professional life, but who I am. It feels like the right time to step back, reflect, and make room for what comes next.

While Arconas has defined the last 25 years of my career, my journey began much earlier. After graduating from the University of Ottawa in the late 1980s, I worked at the National Capital Commission, where mentorship under former Member of Parliament and then Chairman Jean Pigott helped shape my leadership values. In the early 1990s, I moved to Vancouver and followed a lifelong fascination with aviation—beginning with Airshow Canada and leading to an airport-focused career with Airports Council International–Pacific. Working alongside airport leaders across the Pacific Rim broadened my perspective and deepened my commitment to the industry. A brief chapter at Ernst & Young in Toronto expanded my experience, but aviation ultimately brought me to Arconas.

Over the past 25 years, Arconas has continually evolved, navigating an industry shaped by major disruptions: 9/11, SARS, economic downturns, and most significantly, COVID-19. Through it all, what stood out was the resilience, creativity, and determination of the people behind the company. Challenges never came one at a time, but neither did innovation or perseverance.

The ownership, management, and staff of Arconas are nothing short of extraordinary. I’ve never met a group of people who care as deeply about the company and each other. Even when there are disagreements, everyone is ultimately moving in the same direction. It has been inspiring to watch the next generation build careers in aviation, and I hope I’ve been able to share some of the passion this industry has given me.

To Dan and Pablo, owners of Arconas—thank you. You’ve given me more opportunities than I can count. You encouraged me to grow, challenged me, listened to me (mostly), and most importantly, respected me. I will be eternally grateful.

And I would be remiss if I didn’t give a very special mention of Krista Tapley, our Director of Sales. Krista has been at my side for some 20 years. We can finish each other’s sentences. She’s grown and developed her career into something extraordinary and leads our Sales Team with tremendous commitment and care. I would not have achieved as much in my role without her steadfast support and friendship.

As I begin this next chapter, I do so with immense gratitude—for the projects, the challenges, the friendships, and the global aviation community that has shaped my career and my life. As a long-time member of ACI and a founding member of the Canadian PAC, I consider many of my airport friends “lifers” and would like to express my sincerest gratitude to everyone who has touched my life and career. You are all part of the journey and I wouldn’t be here without you. Stay in touch. **Life is good.**





Arconas is the leading designer and manufacturer of furniture for airports and transportation terminals. We are dedicated to enhancing the passenger experience from arrival to departure with a suite of quality seating, power, waste, recycling, and counter solutions.

Leading Airport Furniture for Over 50 Years

For more than five decades, we've manufactured and distributed high-performance furniture for airports and passenger terminals. From our start in 1972 to becoming a global leader, our goal has remained the same: enhance the passenger journey with durable, comfortable, and safe seating, power, waste, recycling, and modular counter solutions.

Our products are built on a long legacy of innovation and design, crafted to meet the evolving needs of travellers and terminal operators alike.

Our Commitment to Sustainability

Arconas cares about the sustainability and life cycle of our products, continuously seeking ways to improve our products and processes. We were the first manufacturer in North America to introduce the use of injection-molded, CFC-free, cold-cured foam. Our foam and metal components are 100% recyclable. Our public seating products meet the requirements of ANSI/BIFMA Emissions Standards M 7.1 2011, are low V.O.C, and do not contribute to poor indoor air quality. Our products can also contribute toward your building achieving LEED credits.

Committed to the Industries We Serve

We are a long-standing, active member of the Airports Council International, the American Association of Airport Executives and the Airport Consultants Council.

We're also a proud and active member of CLIA (Cruise Line International Association) and the Canadian Ferry Association.

We have been recognized as one of Canada's Best Managed companies, a distinction for which the company has re-qualified for year over year and now hold Platinum Status. We are also ISO 9001:2015 and ISO 14001:2015 Certified.



Platinum member



Our Brands

Arconas works with premium brands to deliver the best products to our clients. We are the exclusive distributor of several globally renowned furniture brands: Auweko, Bene, Green Furniture Concept, Heller Furniture, Keilhauer, Sellex, and USM Airportsystems. These partnerships allow us to provide an even more comprehensive suite of innovative solutions to our clients.



Auweko is a leading German manufacturer of waste and recycling containers. Since 1993 Auweko has developed, produced, and distributed a collection of systems for waste and reusable materials that unite form and function in every detail. These containers are made from high-quality, durable, stainless steel, are weather and vandalism resistant, and easy to maintain.



Green Furniture Concept is an award-winning Swedish company specializing in statement wood furniture and acoustic lighting for public spaces. Its designs integrate nature into interiors, creating memorable environments while leading the way in eco-innovation and sustainable public-space design.



Since 1971, Heller has collaborated with world-renowned designers to create timeless, award-winning furniture. Designed for both indoors and outdoors, Heller products combine playfulness, durability, and sustainability. Made in America, with a strong commitment to sustainability, Heller works with new technologies to create innovative products, explore new processes, and create a more sustainable, transparent manufacturing process for the future of design.



Founded by the Keilhauer family more than 40 years ago, Keilhauer began with a simple promise—to manufacture quality seating on time. Since then, it has evolved into an internationally recognized, design-forward contract furniture company with a mission to produce furniture that is good for both people and the planet. Sustainability drives every step of the process, from material sourcing to manufacturing, recycling, and end-of-life practices. More than just a furniture manufacturer, Keilhauer is a design activist.



Founded in 1977 in San Sebastián, Spain, Sellex designs high-quality furniture that adapts to many environments. Collaborating with renowned designers for over 40 years, Sellex has become a global reference in contract furniture and has earned numerous national and international awards, including Spain's prestigious National Design Award in 2011.



USM Airportsystems combines timeless design, advanced technology, and endless flexibility from check-in to boarding. The modular USM Haller system offers versatile design solutions for airports. USM furniture improves airport spaces with high-quality materials and a modern look. From check-in to boarding, USM offers a combination of timeless design, integrated technology, and endless flexibility.

ARCONAS

Head Office

Arconas Corporation
5700 Keaton Crescent
Mississauga, Ontario
L5R 3H5 Canada

United States

Arconas Inc.
220 S. Elm Street
High Point, N. Carolina
27260 U.S.A.

Contact

Telephone: +1 905 272 0727

Toll Free: +1 800 387 9496

Email: info@arconas.com

 [/arconas](#)

 [@arconascorp](#)

 [/arconas](#)



ISO 9001:2015 &

ISO 14001:2015 Certified



arconas.com