






Textiles

Textiles

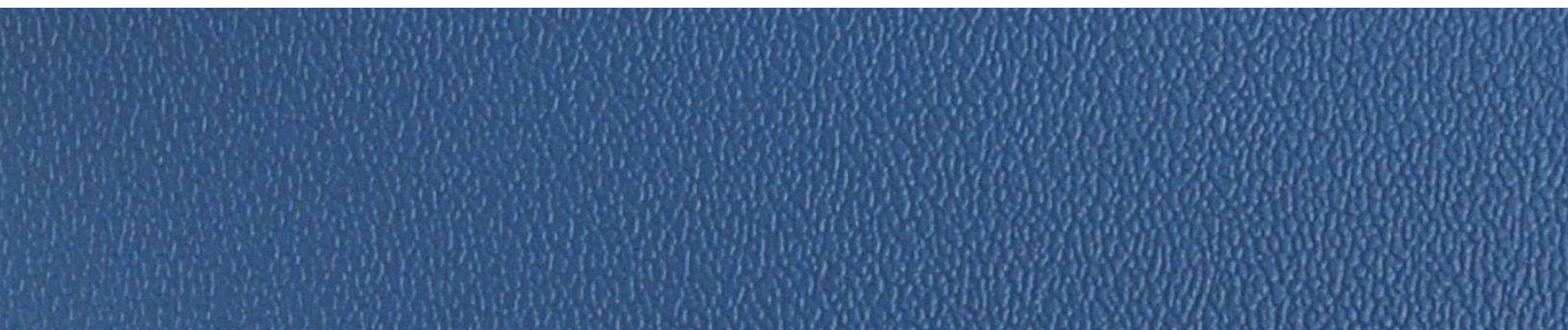
| Criteria |  Material/ Construction |  Colour Selection |  Texture |  Durability |  Environmental Properties |
|--------------------------------|---|---|--|--|---|
| Grade A Esprit | Standard Vinyl | 74 color options | <ul style="list-style-type: none"> • Smooth • Not a lot of stretch • Stays taut | <ul style="list-style-type: none"> • Highly durable • High performance material • Budget-oriented | <ul style="list-style-type: none"> • No environmental properties • Contains plasticizers and PVC |
| Grade B Naugasoft | Premium Vinyl | 22 color options | <ul style="list-style-type: none"> • Soft • Satiny, Leather-like feel | <ul style="list-style-type: none"> • Great wear properties • Proven in high-impact environments | <ul style="list-style-type: none"> • No environmental properties • Contains plasticizers and PVC |
| Grade C Destiny | Nylon Matrix | 29 color options | <ul style="list-style-type: none"> • Softer • Behaves like leather • May get softer over time • More give | <ul style="list-style-type: none"> • Long life cycle • Resists cracking and peeling | <ul style="list-style-type: none"> • No plasticizers or PVC • Low VOC |
| Grade D Eleather | Leather Fiber Composite | 22 color options | <ul style="list-style-type: none"> • Luxurious • Natural, leather-like feel • May get softer over time • More give | <ul style="list-style-type: none"> • Durable • Proven in high-impact environments | <ul style="list-style-type: none"> • No plasticizers or PVC • Low VOC • Contains recycled material |

Grade A | Esprit

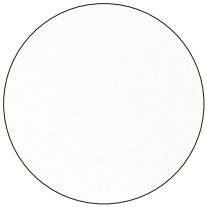
by Nassimi

Standard Vinyl

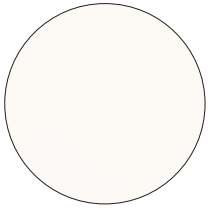
Our Grade A material is a standard vinyl known for its flexibility and strength. It offers a sleek appearance, a large color selection and is easy to clean and maintain.



Grade A | Esprit



Super White



Snow White



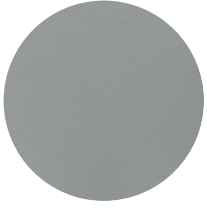
Adobe White



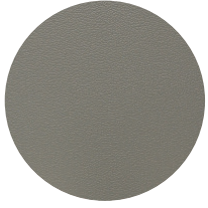
Alabaster



Flint Grey



Dove



Platinum



Gun Metal



Graphite



Blue Ridge



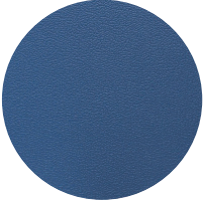
Imperial Blue



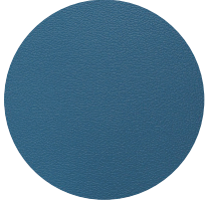
Blueberry



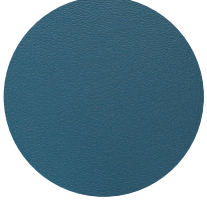
Royal



Marina



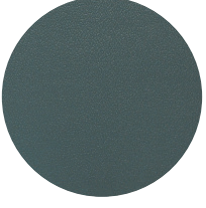
Space Blue



Colonial Blue



Regimental Blue



Ocean Grey



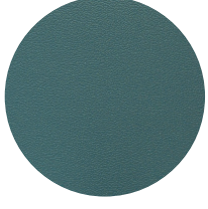
Aqua Dark



Aegean



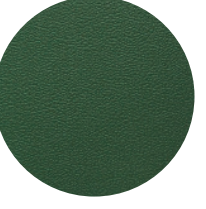
Aqua Green



Grotto



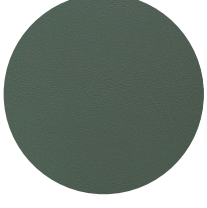
Forest



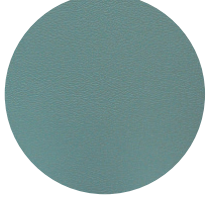
Emerald



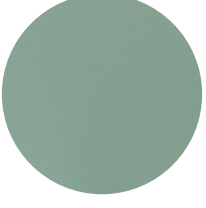
Yew Green



Vizcaya Palm



Teal



Celadon

Grade A | Esprit



Dusty Jade



North Woods



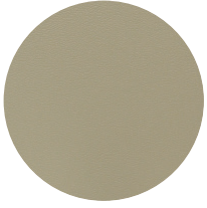
Irish Spring



Olive Green



Artichoke



Green Tea



Taupe



Tea Leaf



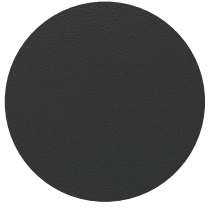
Mocha



Chestnut



Espresso



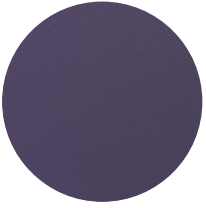
Black



Burgundy



Concord



New Purple



Purple Iris



Grape



Plum



Wood Violet



Iris



Blush



Mauve



Tea Rose



Sangria



Candy Apple



Wineberry



Deep Clay



Claret

Grade A | Esprit



Raspberry



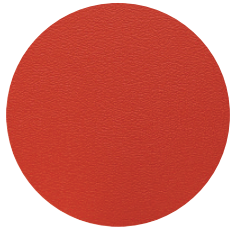
Paprika



American Beauty



Tomato



Mandarin Orange



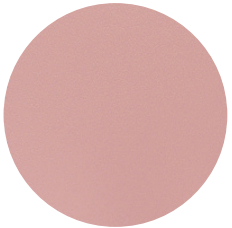
British Tan



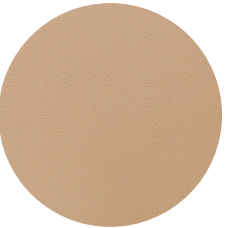
Rose



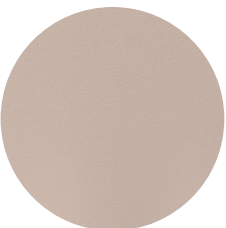
Peach



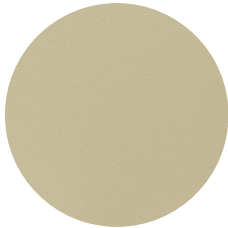
Pink



Shell



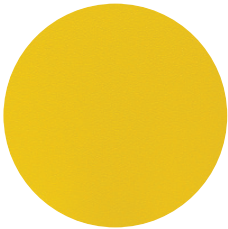
Toast



Parchment



Doe



Sun Yellow



Goldenrod



Saddle Tan



Oak



Dewberry

Grade A | Esprit

Information

GENERAL SPECIFICATIONS

| | |
|-----------------------|-----------------------|
| Surface composition | 100% PVC |
| Substrate composition | 100% Polyester |
| Weight | 30 oz per linear yard |
| Width | 54" |
| Thickness | 0.97 mm |

ADDED PERFORMANCE SPECIFICATIONS

| | |
|--------------------------|-------------------|
| Stain resistance | Yes |
| Colorfastness to uv | 1,000 Hours |
| Bleach resistance | Yes, 10% Dilution |
| Mildew resistant | Pass |
| Cold crack | -20° F |
| Sulfide stain resistance | Yes |

PHYSICAL PERFORMANCE SPECIFICATIONS

| | |
|----------------------------|----------------------|
| Abrasion resistance | 250,000+ Double Rubs |
| Breaking strength | 95 Warp, 73 Fill |
| Crocking resistance | 5 Dry, 5 Wet |
| Flex resistance | 25,000+ |
| Tear strength: tongue tear | 11.9 Warp, 15.4 Fill |
| Seam strength: tack tear | 67 Warp, 43 Fill |

FLAME RETARDANCY SPECIFICATIONS

| | |
|--|------|
| California Technical Bulletin 117:2013 | PASS |
| UFAC Class I | PASS |
| NFPA 260 | PASS |

REDUCED ENVIRONMENTAL IMPACT

- This product does not pose any exposure risks associated with the chemicals in prop 65 no added flame retardant chemicals - ab2998 compliant
- No added anti-bacterial chemicals 7p phthalate free
- Lead / heavy metal free
- Bpa free / PFAS free / tris free / formaldehyde free does not contain conflict minerals

CLEANING AND MAINTENANCE

- For light soiling, clean the soiled area with mild soap and water, then rinse with fresh water and wipe down with a clean cloth.
- For heavy soiling, clean the soiled area with a 50% solution of Isopropyl Alcohol and water. It is important to rinse the cleaned area with fresh water after applying the alcohol solution.
- For food stains or oil, Wipe affected area with a soft cloth or soft bristle brush using a none abrasive cleaner, for example Formula 409 or Fantastik. Rinse with fresh water and wipe dry.
- For healthcare and disinfection, Clean the soiled area with a 10% solution of Household Bleach and water. It is important to rinse the cleaned area with fresh water after applying the bleach solution.

**NOTE: Test on a hidden area before applying to the stain.
DO NOT USE WITH ALCOHOL-BASED CLEANING AGENTS**

Grade B | NaugaSoft

by NaugaHyde

Premium Vinyl

Our Grade B material is a premium vinyl offering a soft, leather-like feel with exceptional durability and versatility. This high-performance material is engineered to withstand wear and tear, making it resistant to fading, stains, and abrasions.



Grade B | NaugaSoft



34-Soft-White



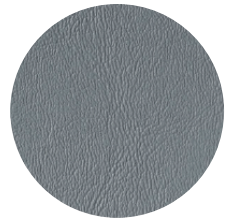
35-Fawn



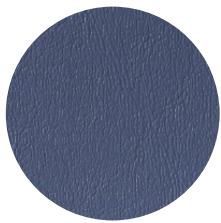
44-Cream



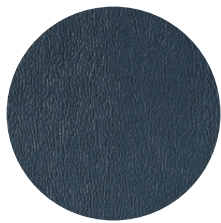
37-Feather



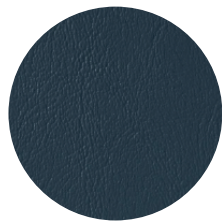
46-Blue-Fog



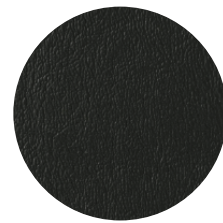
50-Lake-Louise



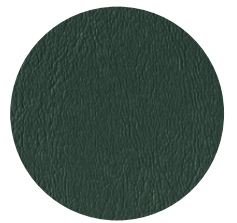
55-Deep Sapphire



54-Mallard-Blue



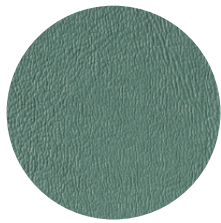
40-Black-Satin



49-DeepSea



39-Laurel



45-MintLeaf



53-Ivy



51-Cocoa



43-VelvetBrown



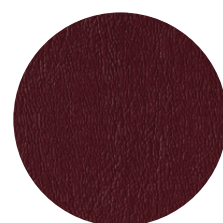
52-Saddle



47-Tapestry Red



38-Harness



41-Mulberry



36-Cabernet

Grade B | NaugaSoft

Information

GENERAL SPECIFICATIONS

| | |
|-----------------------|-----------------------|
| Surface composition | 100% PVC |
| Substrate composition | 100% Polyester |
| Weight | 30 oz per linear yard |
| Width | 54" |
| Thickness | 0.97 mm |

ADDED PERFORMANCE SPECIFICATIONS

| | |
|--------------------------|-------------------|
| Stain resistance | Yes |
| Colorfastness to uv | 1,000 Hours |
| Bleach resistance | Yes, 10% Dilution |
| Mildew resistant | Pass |
| Cold crack | -20° F |
| Sulfide stain resistance | Yes |

PHYSICAL PERFORMANCE SPECIFICATIONS

| | |
|----------------------------|----------------------|
| Abrasion resistance | 250,000+ Double Rubs |
| Breaking strength | 95 Warp, 73 Fill |
| Crocking resistance | 5 Dry, 5 Wet |
| Flex resistance | 25,000+ |
| Tear strength: tongue tear | 11.9 Warp, 15.4 Fill |
| Seam strength: tack tear | 67 Warp, 43 Fill |

FLAME RETARDANCY SPECIFICATIONS

| | |
|--|------|
| California Technical Bulletin 117:2013 | PASS |
| UFAC Class I | PASS |
| NFPA 260 | PASS |

REDUCED ENVIRONMENTAL IMPACT

- This product does not pose any exposure risks associated with the chemicals in prop 65 no added flame retardant chemicals - ab2998 compliant
- No added anti-bacterial chemicals 7p phthalate free
- Lead / heavy metal free
- Bpa free / PFAS free / tris free / formaldehyde free does not contain conflict minerals

CLEANING AND MAINTENANCE

- For light soiling, clean the soiled area with mild soap and water, then rinse with fresh water and wipe down with a clean cloth.
- For heavy soiling, clean the soiled area with a 50% solution of Isopropyl Alcohol and water. It is important to rinse the cleaned area with fresh water after applying the alcohol solution.
- For food stains or oil, Wipe affected area with a soft cloth or soft bristle brush using a none abrasive cleaner, for example Formula 409 or Fantastik. Rinse with fresh water and wipe dry.
- For healthcare and disinfection, Clean the soiled area with a 10% solution of Household Bleach and water. It is important to rinse the cleaned area with fresh water after applying the bleach solution.

NOTE: Test on a hidden area before applying to the stain.

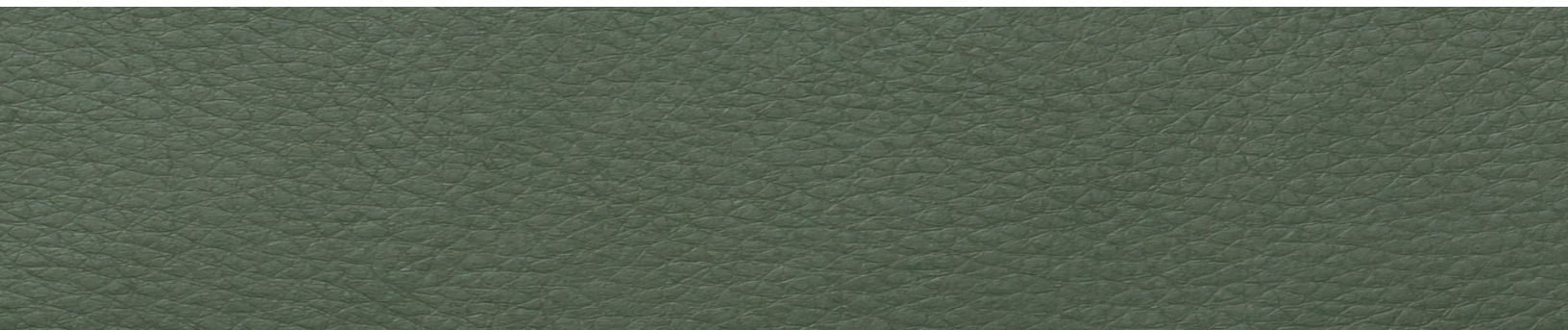
DO NOT USE WITH ALCOHOL-BASED CLEANING AGENTS

Grade C | Destiny

by Majilite

Nylon Matrix

Our Grade C material is a nylon matrix fabric offering a luxurious, durable finish with a soft texture, engineered for longevity and ease of maintenance. It is resistant to stains, moisture, and wear, making it ideal for high-traffic environments.



Grade C | Destiny



Parchment



Eggshell



Ash



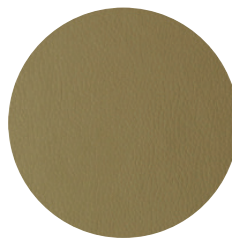
Mink



Truffle



Olive



Cactus



Butter



Dune



Oak



Chestnut



Football



Saddle



Root



Deep Red



Wine



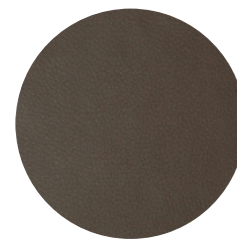
Black Rose



Black

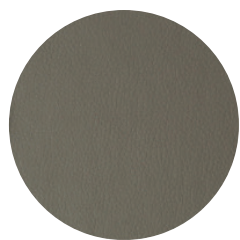


Newport

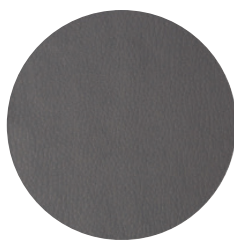


Mocha

Grade C | Destiny



Storm



Periwinkle



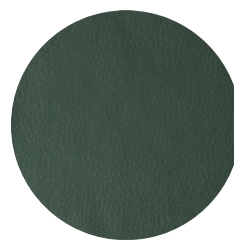
Blueberry



Royal Purple



Otter



Patina



Juniper



Cedar



Evergreen

Grade C | Destiny

Information

GENERAL SPECIFICATIONS

| | |
|-----------------------|------------------------------------|
| Substrate composition | 100% Nylon Fiber Matrix |
| Weight | 8.8 oz/sq yd, 300 g/m ² |
| Width | 54" |

PHYSICAL PERFORMANCE SPECIFICATIONS

| | |
|----------------------------|-------------------------------------|
| Abrasion resistance | 1,000,000 Double Rubs |
| Cold crack | -28° F |
| Tear strength: tongue tear | 30 lbs x 30 lbs (ASTM D-1117-80) |
| Seam strength: tack tear | 100 lbs x 100 lbs (ASTM D-1683-90A) |

FLAME RETARDANCY SPECIFICATIONS

| | |
|--|------|
| California Technical Bulletin 117:2013 | PASS |
| UFAC Class I | PASS |
| NFPA 260 | PASS |
| Tunnel Test | PASS |

REDUCED ENVIRONMENTAL IMPACT

- This product does not use PVC's, plasticizers, phthalates, formaldehyde, lead, cadmium, dioxins, or ozone-depleting chemicals in our products or in their production.
- Majillite products Pass CA Section 01350 (VOC emissions), are REACH compliant and meet CAL 117-2013 and NFPA 260 without the addition of flame retardant chemicals
- Proposition 65 Statement available upon request

CLEANING AND MAINTENANCE

- Use a clean cloth or soft sponge to dab the stain with soapy water, mixed according to the manufacturer's directions. Remove the soap solution by wiping the area with a cloth and clean water. Dry with a soft lint-free cloth or towel.
- Very stubborn stains or non-water soluble stains can be removed with a mild solvent such as naphtha (lighter fluid, paint thinner). Lightly wipe the stain with a clean cloth which has been moistened with solvent. Blot the area with a dry cloth and allow to dry.
- Many ink and magic marker stains can be removed using a solution of one part Wisk detergent and one part rubbing alcohol. Dab lightly with a cloth which has been moistened with the solution. Do not rub. As the ink loosens, blot the area with a dry cloth. Repeat if necessary. Rinse with a cloth damp-ened in clean water, and dry with a soft cloth.
- For commercial installations use mild soap and water for general cleaning.

NOTE: Test on a hidden area before applying to the stain.

DO NOT USE WITH ALCOHOL-BASED CLEANING AGENTS

Grade D | ELeather

by Gen Phoenix

Leather Fibre Composite

Our Grade D option is an eco-friendly material made from recycled leather fibers, combining the strength of leather with sustainability. It's lightweight, easy to maintain, and provides a premium leather-like look.



Grade D | ELeather



2982



2980



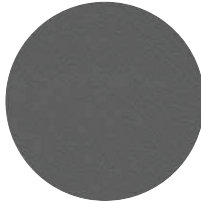
2984



2992



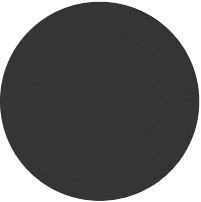
2993



2979



3129



2976



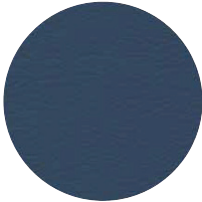
2991



3137



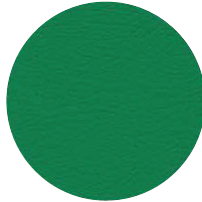
3133



3136



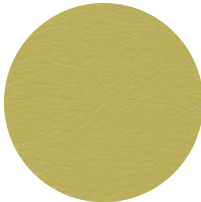
3130



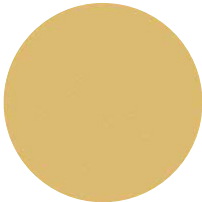
2978



3131



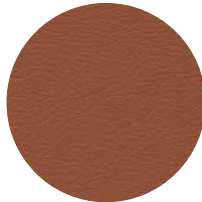
3132



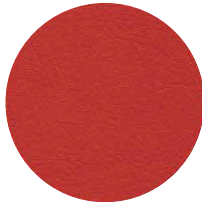
2977



3134



3135



2990



3128



2989

Grade D | ELeather

Information

GENERAL SPECIFICATIONS

| | |
|-----------------------|------------------------------------|
| Substrate composition | Leather Fiber Composite |
| Weight | 8.8 oz/sq yd, 300 g/m ² |
| Width | 54" |

PHYSICAL PERFORMANCE SPECIFICATIONS

| | |
|---------------------|--------------------|
| Abrasion resistance | 50,000 double rubs |
|---------------------|--------------------|

FLAME RETARDANCY SPECIFICATIONS

| | |
|--|------|
| California Technical Bulletin 117:2013 | PASS |
| UFAC Class I | PASS |
| NFPA 260 | PASS |

REDUCED ENVIRONMENTAL IMPACT

-

CLEANING AND MAINTENANCE

- For light soiling, use a clean cloth or soft sponge to dab the stain with soapy water. Remove the soap solution by wiping the area with a cloth and clean water. Dry with a soft lint-free cloth or towel.
- For heavy soiling or non-water soluble stains can be removed with a mild solvent such as naphtha (lighter fluid, paint thinner). Lightly wipe the stain with a clean cloth moistened with solvent. Blot the area with a dry cloth and dry.

NOTE: Test on a hidden area before applying to the stain.

DO NOT USE WITH ALCOHOL-BASED CLEANING AGENTS