

CONNECTIONS



SEE INSIDE

Transforming EWR

**Evolving the Passenger
Experience**

**Avro: The Seating
Ecosystem Built for
the Future**

AERO by Sellex



Minimalism, elegance, comfort and versatility, designed to withstand the elements and the passage of time. Discover AERO.

Exclusively distributed in North America by **ARCONAS**

arconas.com/sellex

IN THIS ISSUE

AVRO

- 4 The Seating Ecosystem Built for the Future
- 10 In Conversation with Pearson Lloyd

PASSENGER EXPERIENCE

- 12 Transforming EWR
- 16 Evolving the Passenger Experience
- 20 Integrating Power
- 24 Making Passenger Spaces More Accessible

FEATURED PRODUCTS

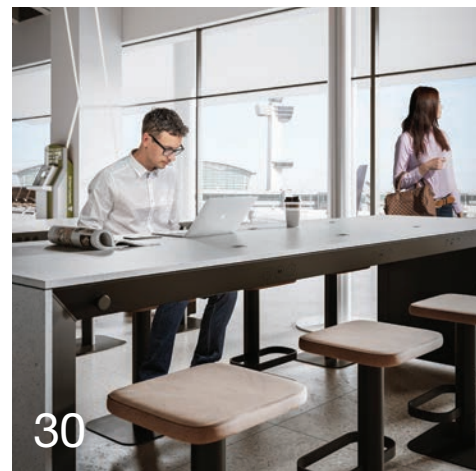
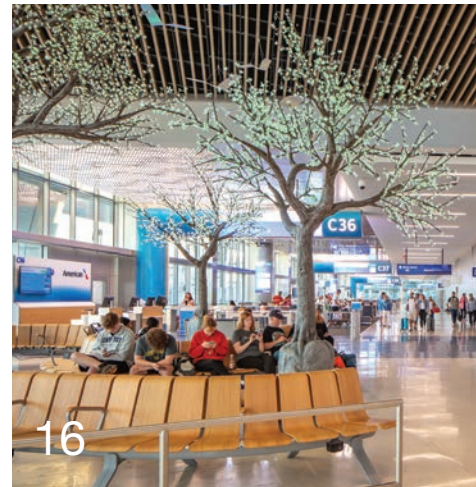
- 26 Discover Bene
- 28 USM: A Modular Solution
- 30 emBARq
- 32 Green Furniture Concept: Meet Me Under the Tree
- 37 Auweko Liquid Disposal Bin

FEATURED TERMINALS

- 38 Reflecting the Natural Beauty of the Gold Coast
- 40 Port Canaveral Cruise Terminal 3
- 42 Creating a MEMorable Experience

ARCONAS

- 45 Arconas Portfolio
- 54 About Arconas



Avro[®]

The seating ecosystem
built for the future.



A complete, high-performance seating ecosystem designed to meet the evolving needs of the modern traveler, Avro is the most versatile furniture ecosystem on the market today.

Created to elevate and enhance today's passenger experience, Avro offers terminal operators a single, endlessly flexible seating system for all types of travelers. With its combination of elegant design, vivid colors, visionary engineering, and integrated power, Avro elevates any interior space, transforming high-traffic waiting areas into VIP lounge experiences.



Eco-efficient

Avro's production and distribution processes consider environmental responsibility, economy, and efficiency. Avro's structural components are crafted from endlessly recyclable aluminum, and all components are designed to be easily replaceable to minimize waste and maximize Avro's lifespan. The seating shells, made of polypropylene composite, are stackable for efficient and economical shipping. The fully demountable system is engineered for easy onsite assembly, ensuring Avro's carbon emissions are the lowest they can possibly be. At the end of their lifespan, the seating shells can be repurposed to create a variety of items like clothing, industrial fibers, containers, storage racks and more.



Simple to install. Easy to maintain.

Thanks to inventive engineering and a pioneering assembly mechanism, Avro is simple to install, maintain, reconfigure and replace – with no specialist training or tooling required. Avro's aluminum construction, coupled with durable, wipe-clean seating shells, make cleaning and sanitizing quick and easy. The intuitive modular structure also allows servicing with minimal tools, so Avro can function and look just as good as the day it was first installed.



Designed for tomorrow

Avro's ingenious aluminum support structure and patented universal connector are engineered to accommodate Avro's entire extended family of seating, including tandem, hospitality lounge, and upholstered recliners, as well as benches, tables and accessories.



Avro Recliner and Lounge



Multiple colors, updateable upholstery

Avro delivers a rich and refined passenger experience in both the elegance of its form and the versatility of its color palette.

Thanks to the high-pressure injected reinforced polypropylene composite that forms Avro's shell, all colors in the confident, sophisticated palette are UV-stable, and guaranteed to withstand the highest-traffic zones. Avro is both built to last and engineered to adapt.



Futureproof power integration

Easy-to-update outlets give passengers convenient access to safe power sources. Avro incorporates low-voltage USB-A and USB-C outlets in the armrests so passengers can safely and conveniently charge their devices or catch up on work as they move through the airport. The integrated power system offers a safe and secure electrical platform accessible only to maintenance personnel. The patented, retrofittable outlets ensure ease of maintenance while future-proofing the power supply as technology evolves. No matter how quickly things move, Avro is ready to adapt.





Luke Pearson (left) and Tom Lloyd (right)

INTERVIEW

In Conversation with Pearson Lloyd

Leading London design practice, Pearson Lloyd works with manufacturers, brands, and public bodies to identify and build products, spaces, and services that respond to the challenges of the day and enhance our experience of the world. Tom Lloyd, one half of the design duo, gives his take on Avro and how it enhances the modern traveler's experience.

Can you tell us a little about yourselves and your studio Pearson Lloyd?

We are furniture designers across a wide range of sectors including transport, workplace, healthcare, cities, and residential. Our work exists at the intersection of product, service, and space. 2022 marked the 26th anniversary of the foundation of Pearson Lloyd.

What was the inspiration behind the Avro collection?

We simply wanted to create the most elegant, intelligent, flexible, and efficient airport seating program on the market.

Where do you see the Avro collection being used and how will it interact with other furniture?

While we see Avro being used primarily in airports, its versatility lends itself well to any space whether in the public or private realm.

The breadth of the Avro collection means it can be customized in different manners and configurations, making it ideal for new blended workplace and transport environments.

What is the Circular Design aspect of the material selection?

Avro is designed to last. This is the baseline of circularity. Each component is created from a single material, which allows it to be repaired, renewed and recycled easily and efficiently. This method helps to maximize Avro's lifespan but also minimizes waste when it's ready to be replaced.

What inspired the Avro color palette and its performance in the material?

There are 8 refined colors in the Avro collection, comprised of dark neutrals, warm tones and vibrant accents. Inspiration was taken from the natural and industrial landscapes of Canada. The palette offers a breadth of tones to cover a wide range of spatial territories, from hospitality to aviation.

As designers, how do you understand and design for the user experience?

We start with understanding; of the world, the environment we are working in, and the needs, priorities, and values of the users of our products. In reality, we are designing for the same user, whether they are at home, on the move, at work, or at play, while considering how they might interact differently within each of these spaces.

How do you see the Avro ecosystem evolving?

We have designed Avro as a platform that can grow and change over time in response to changing habits and needs in the market. The universal base structure and connector gives the system flexibility to develop and accommodate new elements and accessories that emerge as needed over time. Simple, beautiful, endlessly adaptable – Avro is the seating ecosystem built for the future.



NEWARK, NEW JERSEY, U.S.

A New EWR: Newark Liberty International Airport's stunning Terminal A transformation



Custom Green Furniture Concept Nova C Bench

Newark Liberty International Airport's brand new Terminal A recently opened to the public, unveiling a 1 million-square foot, state-of-the-art facility aimed at creating a first-class passenger experience and establishing a sense of place distinct to New Jersey.

EWR



Arconas was honored and excited to be part of this project, which is the largest design-build in the state's history.

From the very beginning, The Port Authority of New York and New Jersey (PANYNJ) had a clear vision for the facility: a world-class terminal that would embody and reflect the spirit of New Jersey. They contracted Munich Airports NJ LLC to build and operate the terminal and to bring to life a "Journey of Surprises" for passengers. As you walk through the terminal, from artwork, digital installations, local businesses and concessions, the passengers' senses are immersed in the sights, sounds, and flavors of the three distinct "regions" that make up a uniquely New Jersey experience: Coastal, Woodlands and Communities.

← To reflect the natural beauty of the New Jersey woodlands, shades of green create inviting and calming forest-like spaces within the terminal

↓ Neutral shades create urban-like areas to pay homage to the many urban and local communities that surround the airport

“Collaborating with Arconas on this project was a dream.”

— SANDRA CHAGLIASSIAN

Director of Sales and Marketing for Green Furniture Concept



“Arconas is proud to have played a part in bringing such an innovative and immersive facility to life. This bright and spacious new terminal will be a source of pride for Newark and its surrounding communities for decades to come.”

– LYNN GORDON

Vice President of Business Development at Arconas

↓ **Bernù poly tandem seating in vibrant colors and Smarin Pebbles provide a casual and playful feel**

Arconas was tasked to supply seating that embraced the airport’s vision and complemented the overall passenger experience. “Arconas was the perfect choice as our furniture vendor to deliver this complex and unique scope and the result was magic,” said Denis Shatokhin, Munich Airports Group.

Arconas supplied its Bernù Poly tandem seating in custom colors with powder-coated “Blackstone” finishes, as well as Green Furniture Concept Nova C wood bench seating in custom colors and unique configurations to bring the vision to life.

“Collaborating with Arconas on this project was a dream,” said Sandra Chaglassian, Director of Sales and Marketing for Green Furniture Concept. “The amount of creativity and ingenuity we put into all the different configurations and colors was quite a challenge but to see it come to life and capture the essence of New Jersey was the ultimate accomplishment.”





← **Green Furniture**
Concept Nova C bench
with integrated power

↓ **Auweko waste and
recycling bins with
custom decals**

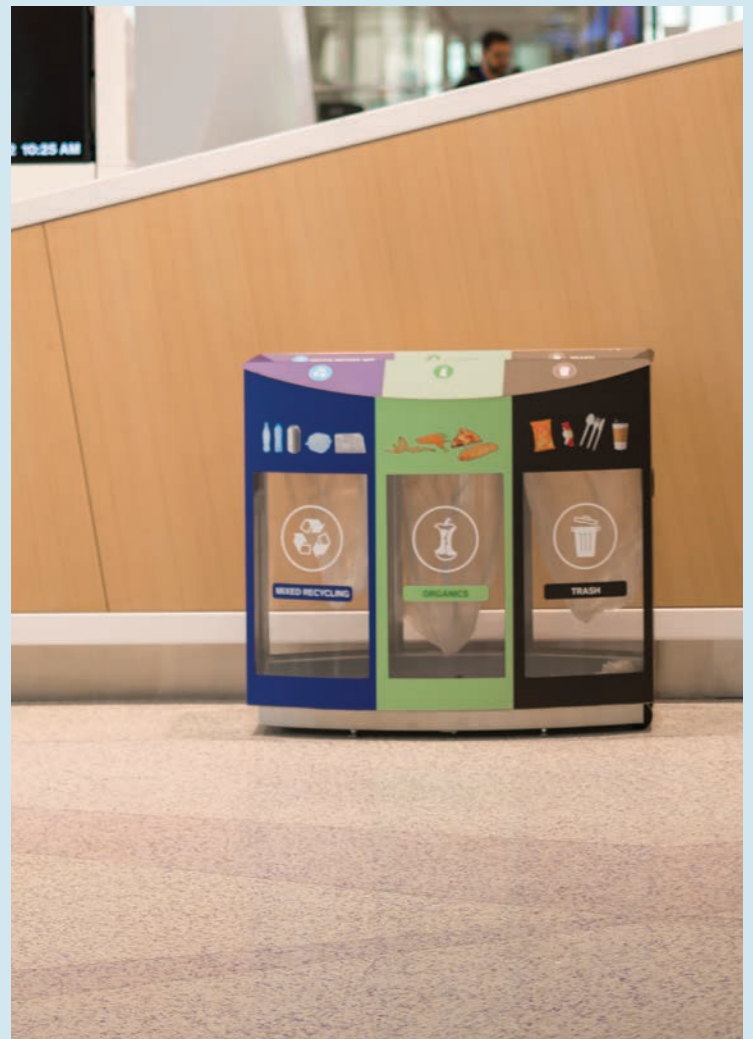
The use of Smarin's Pebbles in gate hold areas provide a casual and playful feel.

Arconas' inPower flex 3 and Green Furniture Concept power modules were included on all seating, some in fun, complimentary colors, so that power is readily available for passengers on multiple platforms: USB-A, USB-C, AC and wireless charging.

Sleek Auweko waste and recycling bins with transparent side panels and custom decals are also placed throughout the terminal.

The reaction to the new terminal and seating has been overwhelmingly positive. "There are so many different places to sit," said one passenger. "Waiting areas with charging under seats, corner chairs with leg rests, round cushions, wooden benches and lounge chairs...they're all a big plus!"

"Arconas is proud to have played a part in bringing such an innovative and immersive facility to life," said Lynn Gordon, Vice President of Business Development for Arconas. "This bright and spacious new terminal will be a source of pride for Newark and its surrounding communities for decades to come."



Evolving the Passenger Experience

As we navigate our way in the post-pandemic world, travelers' wants and expectations have changed, creating the need for a renewed focus and approach to what makes a great passenger experience.





Dallas Fort Worth International Airport | Green Furniture Concept Ascent bench and Leaf Lamp Tree © Corgan

“A dozen years ago, in-seat power was a novelty but now it's an essential feature passengers expect.”

– LYNN GORDON

Vice President of Business Development at Arconas

↓ iBench is an innovative solar powered bench that incorporates smart features such as USB and wireless charging and Bluetooth connectivity

Technology

There's no denying that mobile and digital technology has changed the way we interact with the world around us. Booking your flight, checking in and getting your boarding pass can all be done at your fingertips on a mobile device. Walk through any departures gate and you'll see people catching up on emails, facetimeing family before they take off or watching a show while they wait.

“A dozen years ago, in-seat power was a novelty but now it's an essential feature passengers expect,” says Lynn Gordon, Vice President of Business Development at Arconas. “Amenities like charging plugs to accommodate different devices and tablet arms with wireless charging and cup holders are conveniences that passengers appreciate, and sometimes even expect, even if they don't consciously think about it.” (For more details on Arconas' range of power integrated furniture, go to page 20).





Environment

Open, airy and natural spaces can help to provide passengers with a sense of calm and reduce the stress and anxiety of travelling. High ceilings, interesting architecture, lots of windows and natural light help to create an inviting atmosphere. The addition of greenery and nature elements can also bring a sense of peace and tranquility to the terminal environment.

Understanding that not all passengers are created equal allows for a more inclusive experience. A variety of seating configurations can help make passengers of all comfort levels feel at ease. “People are a lot more conscious of their personal space because of COVID. Some people don’t want to sit next to a stranger if they don’t have to” says Wilson Rayfield, Executive Vice President, Aviation at Gresham Smith, an architecture and design firm known for delivering the ultimate passenger experience.

By giving options that suit an array of comfort styles and levels will help to create an enjoyable experience and satisfy the constantly evolving needs of the passenger.

← **Phoenix Sky Harbor
Airport | Bernü Aero
tandem seating
©Corgan**



Sense of place

Terminals and passenger spaces have also become a reflection of their surrounding communities. Bringing in the culture of the city is a unique way to enhance the passenger experience and give a sense of place. Even if it’s not their final destination, getting a taste of the local flavours, art installations and entertainment without having to leave the building can leave the passenger with a good impression and a memorable experience.

← **Newark Liberty
International Airport |
Green Furniture
Concept Nova C
Recliners**

Integrating Power

Mobile devices have become an essential part of everyday life. For travelers especially, mobile devices are a lifeline, providing access to important documents, money, information, and entertainment. Arconas recognizes the vital role this plays in the passenger journey and has a variety of products to make sure every passenger has power at their fingertips.





2 — Avro

Avro incorporates low-voltage USB-A and USB-C outlets in the armrests for safe and convenient charging. Tables can be equipped with integrated wireless charging. Avro's patented, retrofittable outlets ensure ease-of-maintenance while future-proofing the power supply as technology evolves.

3 — inPower™ flex 3

inPower flex 3 features one AC receptacle, two USB-A, and two USB-C charging ports.

4 — Place

Integrated power units feature AC and USB ports.



1 — Surge Power Station

Part of the Hopscotch Collection, the Surge Power Station functions as a charging spot and a work surface. The power station features 8 USB ports, 4 AC plugs, and 2 wireless charging spots.



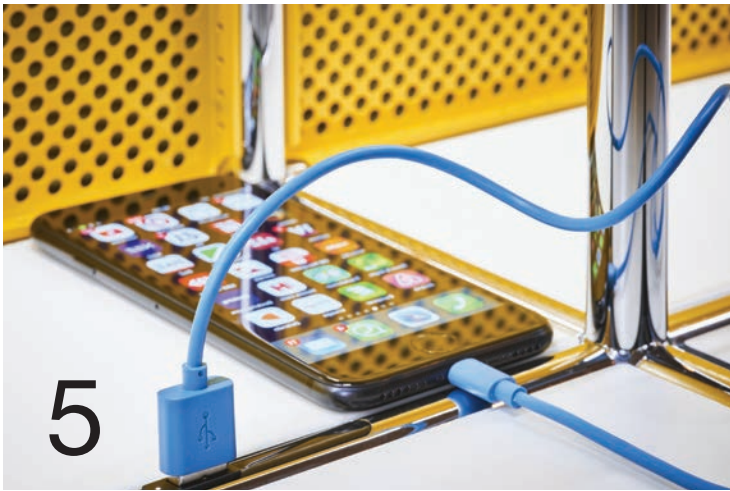


ibench® the solar powered bench

Introducing ibench, an innovation in urban street furniture built for communities and companies.

Solar powered, wifi-enabled, bluetooth connected: ibench is the smart bench for the information age.

Developed in Germany and designed for durability and to withstand environmental influences, ibench is outdoor furniture for the future.



5 – USM Modular Counters

USM counters integrate USB charging power into the structure of the furniture so that only the operating switch remains visible, providing a clean and seamless look.



6 – Green Furniture Concept

Green Furniture Concept has power modules in multiple forms so that power is readily available for passengers for any device. Integrated USB-A and USB-C ports on the seat backs, undermount AC modules and wireless charging tablet arms provide charging options for any device.

7 – emBARq

The emBARq table provides multiple AC, USB-A, and USB-C power sources for convenient, safe, and universal charging, including Wireless Charging Pods embedded underneath the table surface for seamless integration.



Making Passenger Spaces More Accessible

Providing an exceptional passenger experience includes making passenger spaces universally accessible for all.

Arconas has a variety of seating, power and counter solutions that can help make any facility more barrier-free.



Bernü Aero seating with accessible symbols and removed outer arm at Buffalo International Airport



Accessible seating

Accessible seats are clearly labeled with internationally recognizable accessibility symbols to indicate that the seat is reserved for persons with reduced mobility. For lateral transfers from a wheelchair, the outer arm can be removed from a seat position at the end of the row.

Persons with Reduced Mobility (PRM) seating

Persons with Reduced Mobility (PRM) seating can help passengers feel supported and comfortable. PRM seats are raised slightly higher to allow individuals to get in and out of the seat with ease. The recommended ergonomic seat height for persons with reduced mobility is 19" / 480 mm above the floor.

End-mount power

End-mount power on seating allows people in wheelchairs easy access to power outlets at arm height.

Wheelchair accessible height

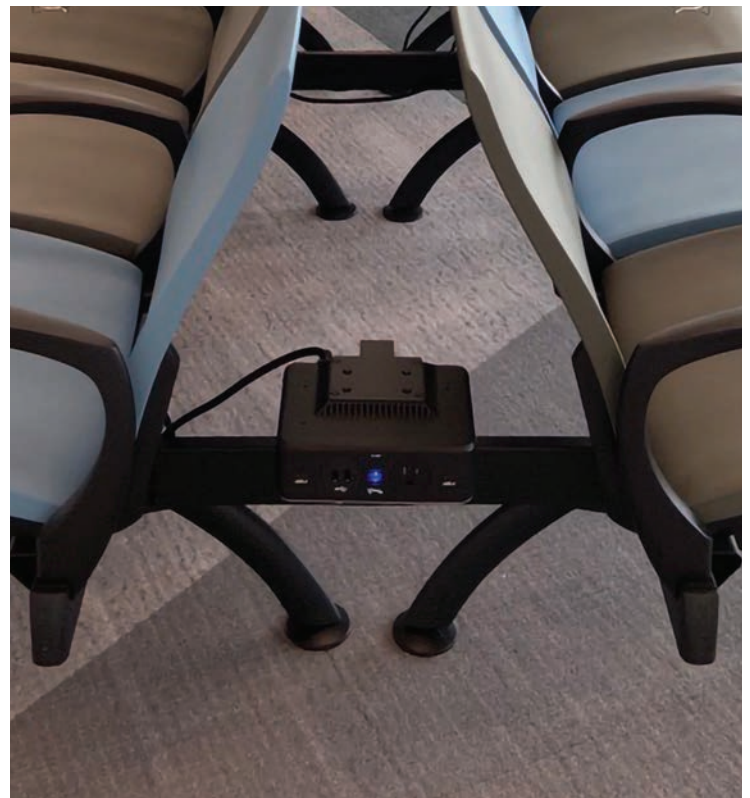
Our emBARq table is available at a wheelchair accessible height with universal charging.

← emBARq table with wheelchair accessible height



← Bernù Aero with PRM seating at Comox Valley Airport on Vancouver Island

↓ Bernù Poly seating with end-mount power at Newark Liberty International Airport





PORTS Task Lounge

FEATURED COLLECTION

Discover **bene**

As the needs and habits of travelers change, passenger terminals are following suit. Gone are the days of traditional waiting areas. Instead, comfortable, casual and collaborative spaces are becoming the norm, offering a variety of seating and waiting options. For this reason, an exclusive distribution agreement for airport and transportation terminals in North America between Arconas and Bene makes perfect sense.

Bene, the international office expert, is a specialist in the design and furnishing of modern working environments. Featuring a collection of sophisticated lounge furniture pieces by designers Christian Horner and Pearson Lloyd, Bene's range of seating products offer versatility, modularity, function, and comfort: all things that help to enhance the passenger experience.

CASUAL is a flexible, versatile, modular seating system that uses functional and comfortable options to create an easy, relaxed environment. The CASUAL collection consists of a bench, lounge chair and table, and would provide stylish and convenient options for relaxed areas with low wait times.



PORTS is a multifunctional system that is flexibly adaptable and can grow to meet the requirements of any space. Stylish and versatile, PORTS can provide a comfortable gathering area in a lounge or a place of privacy and retreat for the business traveler, making it an agile space solution to enhance any passenger experience.



DOCKLANDS creates individual areas of concentration and privacy for those who might need a break from the high traffic or busy areas in the terminal space. Its temporary nature and configuration make it the perfect option to create areas in transition.

SETTLE is a series of multifunctional, modular components that can be combined to create a wide variety of different settings that can be adapted to meet the needs of the passenger and requirements of the space. Perfect for providing a cozy and inviting seating option for low-traffic, communal areas.



The **PARCS** collection includes the Wing Chair Series and Causeway, which provide an abundance of design freedom and seating options: for relaxation, variation, or just a nice place to sit.





MIAMI, FLORIDA, U.S.

A Modular Solution

In 2019, Miami International Airport (MIA) was looking to update its gate counters. Its existing counters were a collection of mismatched wooden desks that had been pieced together over the years. It also had more counters in place than were necessary. Since they were so large and bulky, there wasn't much MIA could do in terms of reconfiguring the space. In addition to being outdated in both form and function, issues caused by the natural environment and geographical location, such as heat, humidity, and moisture, posed constant problems.

The USM Solution

Arconas presented the option of USM Airportsystems modular counters because they seemed to address all the issues MIA identified.

USM's construction of a chrome-plated brass ball joint, chromed steel tubes, and powder-coated metal panels would eliminate the issues the airport had with its old wooden desks due to the heat, humidity, and other environmental factors. Getting rid of the bulky wood structures would also free up space to allow for increased and better passenger flow. The sleek and streamlined design of the new counters would provide a more modern aesthetic and instantly update the look of the terminal concourse.

Coming up with the right customizations was a collaborative effort between MIA, Arconas and USM to ensure the counters could satisfy their needs.



← USM's chrome plated brass ball joint and chromed steel tubes

"We worked really closely with the MIA design team for several months, reviewing their unique requirements," said Krista Tapley, Director of Sales at Arconas. "We decided to try out some sample units for two test gates, so that they could test them out and provide feedback. From there, we were able to make some adjustments for the final units."



“The wonderful thing about USM Airportsystems is that it really is a timeless option.”

– KRISTA TAPLEY

Director of Sales at Arconas

After the trials proved to be successful, 37 units were ordered to replace the old counters in Terminal F: single and double gate counters, as well as small podiums for the scanner at all gate locations.

The rollout process occurred in phases. Since a substantial portion of the project took place during the COVID-19 pandemic, delays were expected. Both Arconas and USM were agile and flexible while working with the airport’s changing timelines due to these delays. When all was said and done, the installation of the new counters took close to a year and was completed in September 2022.

The Result

The airlines find them easy to work with and their IT (Information Technology) provider likes how quickly they can adapt if there’s a change in specs or equipment. They’ve also opened up the space, creating a better passenger flow, and have modernized the overall look and feel of the concourse.

Arconas is proud to have worked closely with MIA and USM to make this project come to life.

“This was a great collaboration between the airport, USM and Arconas,” Krista said. “The wonderful thing about USM Airportsystems is that it really is a timeless option. They can be easily modified and reconfigured as needs change – that level of versatility is invaluable to a client.”



← Single gate counter



FEATURED PRODUCT

emBARq

Integrated technology meets sleek furniture design with emBARq, a clean, functional work surface and charging station for public areas.





Multiple power sources

Wireless Qi charging pads and multiple AC, USB-A and USB-C charging modules allow for convenient, and safe universal charging.

Convenience

emBARq is available in a wide range of widths and lengths with ADA-compliant height, and can comfortably seat up to eight people. A bag hook is located at each end of the units to keep belongings secure and within sight.

Versatility

emBARq is available as a free-standing table or wall-fastened. Since all electrical components are certified to UL standards, emBARq only requires a single power source.



Meet Me Under the Tree: Turning spaces into places with Green Furniture Concept

How do you transform the traditional terminal space into something memorable? By creating interesting and inviting areas that give a sense of place.

Placemaking is the art of turning spaces into places and when it comes to placemaking, Green Furniture Concept is an expert.

In the airport planning process, something as simple as a meeting point could easily be overlooked, but in the quest to offer an exceptional passenger experience, every detail, like a meeting point, is considered.

At Newark Liberty International Airport's brand-new Terminal A, Green Furniture Concept took the task of placemaking one step further by creating multiple focal points featuring their Leaf Lamp Tree surrounded by their Seamless Table in custom unique configurations.

The result is more than a dozen meeting points that create an interesting and inviting sense of place.

Much like most of Green Furniture Concept's product lines, the Seamless Table boasts a modular design. In its basic configuration, the table is offered as a simple circle, however, with the addition of

various straight and curved modules, the table can expand into organic winding shapes. With a bar-height construction, acoustic features, and ambient lighting, the table serves as a unique and biophilic space, suitable for all airport terminals. It can also come equipped with power charging stations, inviting passengers to slow down, recharge and catch up.

The Seamless Table can be finished in any color with plant-based hard wax oil. The metal trunk can be powder coated in any RAL color of your choice, and the felt leaves are available in 80 colors.

So, the next time you're at Newark Liberty Airport, take some time out to meet under the tree and experience how Green Furniture Concept was able to transform a blank canvas into a memorable meeting place.

Arconas is the exclusive distributor for this and all Green Furniture Concept products for airports in North and South America.

Seamless Table's modularity allows for multiple configurations



Tilde



Half Circle



Wiggly



Straight



Custom Green Furniture Concept Seamless Table and Leaf Lamp Tree

Reimagine the Traditional

Seamless Table
Series

Planter Dividers



GREEN
FURNITURE
CONCEPT

Leaf Lamp
Pendants

Leaf Lamp
Trees

↑
C, D & E Gates
Baggage Claim

↑
C, D & E Gates
Baggage Claim

Nova C Series

Ascent Series

We turn traditional spaces into unforgettable destinations.

With the use of our unique and biophilic furniture, we can transform your airport into an indoor oasis - a space where passengers feel calm and happy.

Discover our line of modular seating, acoustic lit trees, workstations and planters available exclusively to Airports in North and South America by our partners at Arconas.



Liquid Disposal Bin

Auweko's Liquid Disposal Bin solution allows passengers to empty their liquid contents before passing through security or in areas where liquids are not allowed.



Liquid Disposal Bin Exterior



Liquid Disposal Bin Interior

It's an all too familiar sight in airports: bins full of plastic bottles, many still with liquids inside, sitting in, on, or around the waste bin before security screening. Not only does this situation reflect badly on the airport, it can create a chaotic, uninviting and unsanitary experience.

The solution? A portable liquid disposal bin that users can empty their bottles into that's easy to move around and be drained by maintenance staff.

Auweko's Liquid Disposal Bin solution allows passengers to empty their liquid contents before passing through security or in areas where drinks and liquids are not allowed. This bin is also a great addition to any commercial facility's waste and recycling program for convenient beverage disposal and to reduce recycling contamination.

The result is a self contained bin that reduces mess and litter, and provides airports and passengers with a seamless solution to help ease their travel experience.

Features of the Auweko Liquid Disposal Bin

Top funnel and grate

The oval aperture at the top includes a plastic funnel which channels up to 50 litres (13.2 US gal) of liquid into the removable polyethylene (PE) tank. A grate/screen at the top and plastic funnel with a strainer helps to prevent objects or other debris from falling into the tank container.

Polyethylene tank

The PE-tank container is removable, leakproof and suitable for collection as well as temporary storage of liquids/beverages. Draining is performed via a faucet which is attached to the tank container, without having to remove the tank. A window on the side of the bin lets staff monitor the level of liquid collected in the inner tank.

Door and wheels

The front opening allows for easy access by maintenance staff. The bin-door is equipped with a snap-lock and key, so only authorized staff can access the tank. The plastic funnel can be pulled out for cleaning. Wheels with locking castors allow for easy transport from the collection area to a disposal drain.



Bernü Aero tandem seating with inPower flex



GOLD COAST, AUSTRALIA

Reflecting the Natural Beauty of the Gold Coast

Gold Coast Airport in Australia recently opened the doors of its new terminal to the public, offering jaw-dropping views of the natural surroundings outside and an equally stunning environment on the inside.



Arconas worked with Hospitality Furniture Concepts in Australia to bring in Bernù Aero tandem seating in custom colors to reflect the natural coastal location of the airport.

“We are excited to see the opening of one of Australia’s newest international terminals at Gold Coast Airport,” said Yanni Mastro from Hospitality Furniture Concepts, who brought the project to life along with the Hassell Australia team. “This terminal expansion leverages the design and capabilities of Arconas’ Bernù Aero in custom shades of blue vinyl that draws from the blue skies of the Gold Coast.”

Plenty of accessible seating is available and achieves Australian accessibility standards (DDA) with clearly marked internationally recognizable accessibility symbols. Several seats also use the PRM bracket, which raises the seat height two inches to 19” / 480 mm to make getting in and out easier for people with reduced mobility.

inPower flex power modules were also incorporated and provide in-seat power throughout the new terminal.

“This terminal expansion leverages the design and capabilities of Arconas’ Bernù Aero.”

– YANNI MASTRO

Hospitality Furniture Concepts

OOL



PORT CANAVERAL, FLORIDA, U.S.

Port Canaveral Cruise Terminal 3



Port Canaveral's newest cruise terminal, dubbed the Launch Pad, is a nod to the Port's key role with the U.S. space program. The terminal's futuristic design, inspired by nearby Kennedy Space Center, gives passengers a fun and inviting environment to wait in before hitting the open seas.



← **Green Furniture Concept Nova C benches with Bernù Aero wood seating upholstered in Space Blue**

↓ **inPower flex power modules and large end tables provide extra convenience**

Arconas supplied Bernù Aero wood seating with upholstery in Space Blue, and satin aluminum hardware with bright polished accents. inPower flex power modules were also integrated into the waiting areas, providing passengers with AC and USB charging options.

Green Furniture Concept's Nova C benches were chosen for their sculptured look, wrapping around columns, to create a calming and whimsical feel in both the waiting and VIP areas.

The result is a clean and modern terminal that any passenger would be happy to start their cruise from.





Place power tandem seating



MEMPHIS, TENNESSEE, U.S.

Creating a MEMorable Experience

Memphis International Airport's transformation project to modernize Concourse B had one mission in mind: to create a positively MEM-orable travel experience.

“The seating is an important part of the airport’s vision for world-class guest experience and harmonizes well with the overall environment and furnishings.”

– APRIL MEYER

Principal, Senior Terminal Designer at Alliance Architects

If you haven't traveled through Memphis International Airport in a while, you might be in for a surprise.

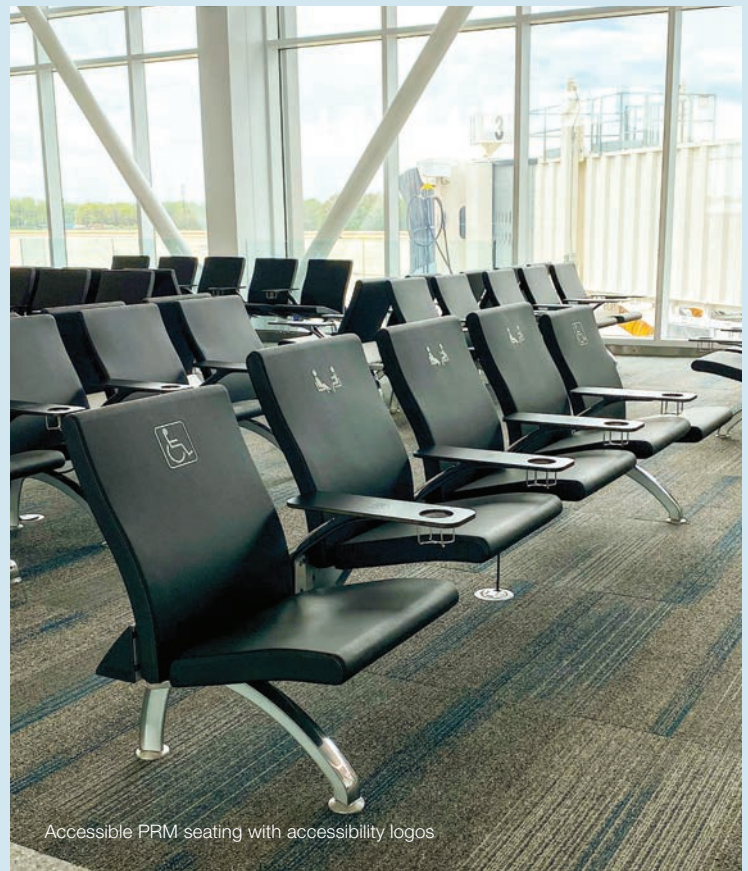
“We worked with all of our tenants, airport partners, engineers and architects and said, we want this to be a Twilight Zone moment,” says Scott Brockman, CEO of Memphis International Airport, “where, when you get off the plane, you think you got off in the wrong airport. And I think we accomplished it.”

This mission was the guiding principle for every decision, from the overall ambience and environment to the lighting and finishes. “The goal was to look at every facet of the concourse and say, how can we take that and make it memorable, no matter what it is.”

One major aspect of comfort they looked at was seating, considering all the different ways in which the passenger would use it. “We didn’t just want to provide utilitarian seating,” Scott says. “Some people sit in these seats for 20 minutes. But if there are flight delays, it could be hours. We wanted comfortable seating that provided amenities and functions that would allow somebody to be comfortable for as long as they’ll be there.”

Arconas supplied Place powered tandem seating with drink holder tablet arms and wireless charging arms. Place’s optional tablet arms create even more personal space between seats so passengers can eat, work or play in comfort. Integrated wireless charging arms and power units with AC and USB ports provide charging options for most devices. A number of PRM and accessible seats with accessible logos were also provided for a wide range of inclusivity.

“The seating has been a game changer for us,” Scott says. “It turned out to be a fabulous asset to delivering on our mission.”



Accessible PRM seating with accessibility logos



Wireless charging arms with drink holders

MEM



Designed by Pearson Lloyd

PORTS Task Lounge

A workstation that unites comfort and functionality.

Exclusively distributed in North America by **ARCONAS**

bene

arconas.com/bene

Arconas Portfolio

We design our products with purpose to ensure each piece follows the highest standards of design, allowing them to be beautiful, functional, and durable.

CATEGORIES

Tandem Seating

Sculptural Seating and Accessories

Lounge and Casual Furniture

Benches, Children, and Family

Modular Counters

Lighting

Power

Waste and Recycling

Tandem Seating

Our versatile collection of modular tandem seating and recliners can be customized in a way that suits your space best, offering the perfect blend of comfort, flexibility, and durability, without compromising on design.



AERIA™



AERO



AVRO®



AVRO® UPHOLSTERED™



BERNÜ® AERO



BERNÜ® AERO POLY



BERNÜ® AERO WOOD



FLYAWAY



PLACE®



SETZ™



AVRO® RECLINER



BERNÜ® LUXE WITH CHAISE

Sculptural Seating and Accessories

Sustainable wood seating adds a natural touch to any space and gives flexibility and freedom of design through modularity.



ASCENT DOUBLE BACK



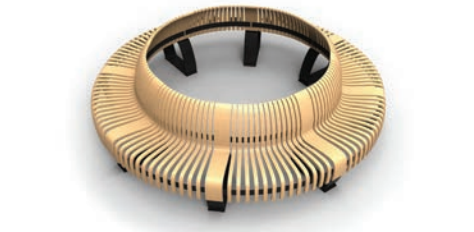
ASCENT DOUBLE BENCH



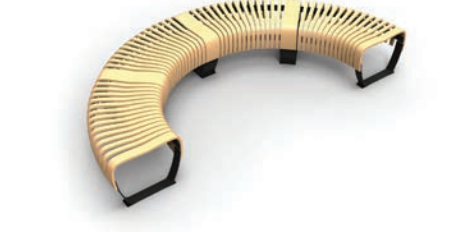
ASCENT DOUBLE RISE



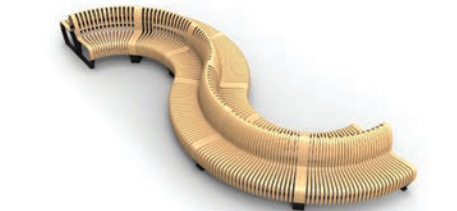
CATERPILLAR



NOVA C BACK



NOVA C BENCH



NOVA C DOUBLE



NOVA C PERCH



NOVA C RECLINER



RADIUS PLANTERS



SEAMLESS TABLE

Lounge and Casual Furniture

Our innovative lounge seating offers a feast for the eye and maximum comfort for the body. We offer a diverse range of products with enough variety to satisfy and embrace all visitors.



AMELIA



AVRO® LOUNGE



CASUAL BENCH



CASUAL LOUNGE CHAIR



CONNEX SINGLE SEAT WITH ARMS



CONNEX SOFA



CONNEX LINEAR



CONNEX LINEAR WITH TABLES



CONNEX CURVED



CONNEX BACK TO BACK



CONNEX ATRIUM



DATUM



DOCKLANDS



NEVADA



PARCS CAUSEWAY



PARCS WING CHAIR



PARC WING SOFA



PORTS



PORTS LOUNGE CHAIR



PORTS TASK LOUNGE



PORTS LOUNGE SOFA



SETTLE



TWENTY TWENTY

Benches, Children, and Family

Accessorize your public space with simple, stylish benches or youthful designs and shapes fit for spaces where people come together.



AEREA™ BENCH



AERO BENCH



AMELIA BENCH



AVRO® BENCH



BERNÙ® BENCH



BERNÙ® WOOD BENCH



CONNEX BENCH



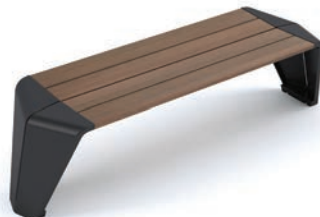
FLYAWAY BENCH



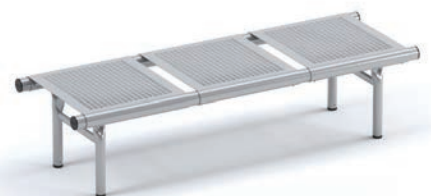
HOP BENCH



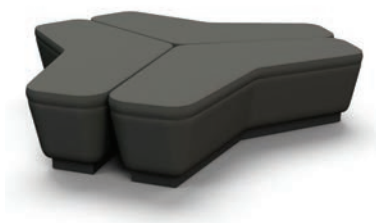
MORELLI METAL BENCH



MORELLI WOOD BENCH



SETZ™ BENCH



STAR BENCH



BOULOU



FIORE



MOLECULE



ZIGZAG

Modular Counters

Flexible and cost-effective furnishings for all passenger processes based on a simple tube and panel solution.



BOARDING PASS CONTROL COUNTER



CHECK-IN COUNTER



GATE COUNTER



HEALTH-CHECK COUNTER



REVEST TABLE

Lighting

Create ambiance with our unique range of lighting options.



BEACON LIGHT STATION



LEAF LAMP METAL TREE

Power

Give people the convenience of power through our plug and play surface systems, wireless charging, and under-seat modules with USB-A and USB-C ports and AC receptacles.



EMBARQ™



INPOWER™ FLEX 3



SURGE POWER STATION



WIRELESS CHARGING

Waste and Recycling

Our maintenance-friendly bins are made from a choice of stainless steel or zinc-plated, powder-coated, cold-rolled steel, allowing them to be both functional and elegant.



GRAPH X



KENDO



LIQUID DISPOSAL BIN



ORIGINAL



RUX



SKYLINE



SMOKE STAX



SUPER TRASHBOX



TEMPTATION

ARCONAS

Arconas is the leading manufacturer and distributor of furniture for airports and passenger terminals. We are dedicated to enhancing the passenger experience from arrival to departure with a suite of quality seating, power, waste, recycling, and counter solutions.



Industry Experts

Our team intimately understands the increasing complexities and competitiveness of the airport and transportation industries. We work with our clients to choose the right mix of furniture that will increase customer satisfaction and improve business performance. Our dedicated team works closely with facility planning, marketing, and operations personnel, as well as architects and designers to enhance the passenger experience for every type of traveler.

Project Management

Arconas offers experienced project management, professional installation services, comprehensive warranties, on-time delivery, and customized maintenance programs. We stock replacement parts for life and provide prompt follow-up and customer service.

Design and Planning

We work individually with each client to meet their unique objectives and requirements such as increasing accessibility or encouraging retail and food court sales. Our assortment of furniture options enables us to help with multiple areas within any airport or passenger terminal, including hold rooms, outdoors, security, lounge, family, and VIP areas.

Visit Us

Arconas actively participates in airport and transportation industry conferences and exhibitions around the world every year. Major shows include Passenger Terminal Expo, ACI, AAAE, inter airport, and Seatrade.



Platinum member



OUR BRANDS

Arconas works with premium brands to deliver the best products to our clients. In addition to our own suite of products, we are the exclusive distributor of top European furniture manufacturers AUWEKO, Bene, Green Furniture Concept, Sellex and USM Airportsystems to airports and passenger terminals throughout the Americas.



Auweko is a leading German manufacturer of waste and recycling containers. Since 1993 Auweko has developed, produced, and distributed a collection of systems for waste and reusable materials that unite form and function in every detail. These containers are made from high-quality, durable, stainless steel, are weather and vandalism resistant, and easy to maintain.



Bene, the international office expert, is a specialist in the design and furnishing of modern office and working environments. Bene defines the office as a living space, and its concepts, products and services turn this philosophy into a reality.

The Bene Group is a globally active company with its head office and production facilities in Waidhofen an der Ybbs, Austria. As a significant market player in Europe, Bene stands for innovative concepts, inspiring offices, and high-quality design.



Green Furniture Concept is an award winning Swedish company specializing in seamless wood seating and acoustic lighting options. The company strives to be a leader in sustainable furniture design and production and is committed to environmental sustainability.



Sellex S.A.U. is an award-winning company founded in San Sebastian, Spain, and is devoted to the manufacturing of design furniture for the contract market: Airports, Passenger terminals, Healthcare, Hospitality, Offices, and other public spaces.

With more than 40 years of history, Sellex has developed collaborations with prestigious designers and is renowned worldwide.



USM Airportsystems develops furnishings for all passenger processes in airports, such as modular counters, and mobile kiosks on the basis of the Swiss-made USM Haller modular furniture system. From check-in to boarding, the company offers a combination of timeless design, integrated technology, and endless flexibility.

ARCONAS

Head Office

Arconas Corporation
5700 Keaton Crescent
Mississauga, Ontario
L5R 3H5 Canada

United States

Arconas Inc.
220 S. Elm Street
High Point, N. Carolina
27260 U.S.A.

Contact

Telephone: +1 905 272 0727
Toll Free: +1 800 387 9496
Email: info@arconas.com

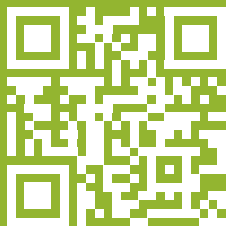
 [linkedin.com/company/arconas/](https://www.linkedin.com/company/arconas/)

 [@arconascorp](https://www.instagram.com/arconascorp)

 [facebook.com/arconas](https://www.facebook.com/arconas)



ISO 9001:2015 &
ISO 14001:2015 Certified



arconas.com