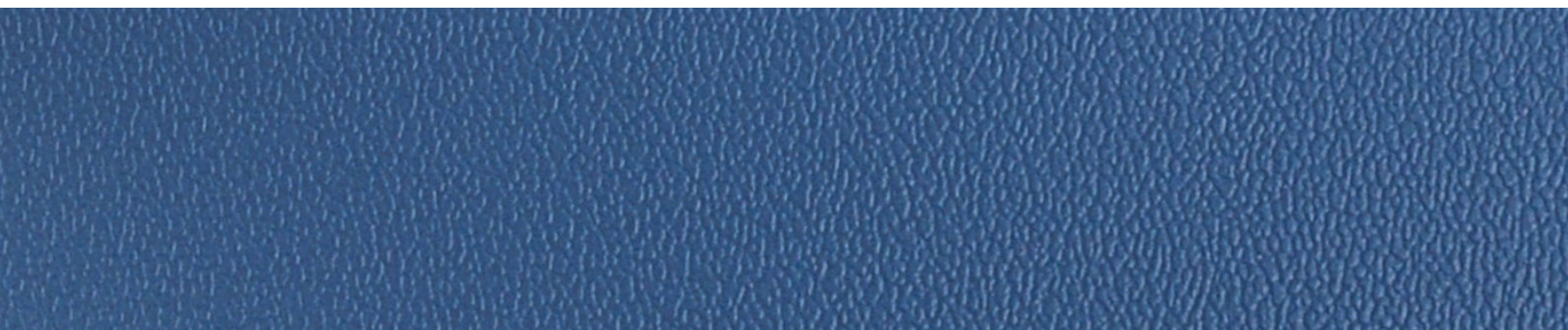


Grade A | Esprit

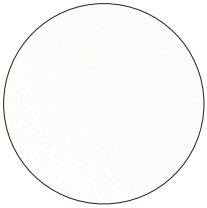
by Nassimi

Standard Vinyl

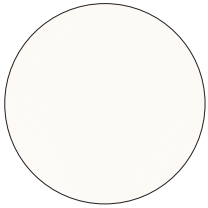
Our Grade A material is a standard vinyl known for its flexibility and strength. It offers a sleek appearance, a large color selection and is easy to clean and maintain.



Grade A | Esprit



Super White



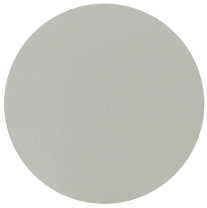
Snow White



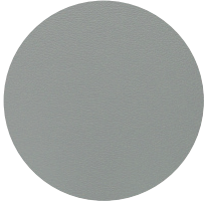
Adobe White



Alabaster



Flint Grey



Dove



Platinum



Gun Metal



Graphite



Blue Ridge



Imperial Blue



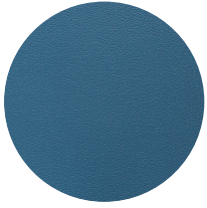
Blueberry



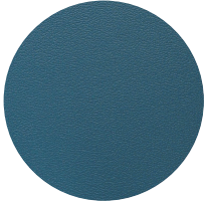
Royal



Marina



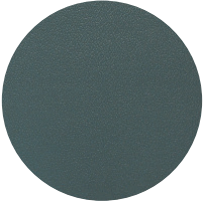
Space Blue



Colonial Blue



Regimental Blue



Ocean Grey



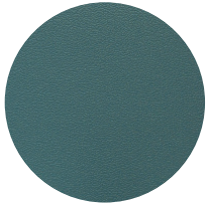
Aqua Dark



Aegean



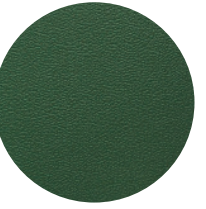
Aqua Green



Grotto



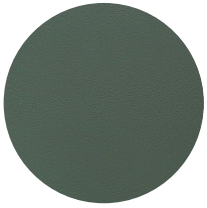
Forest



Emerald



Yew Green



Vizcaya Palm



Teal

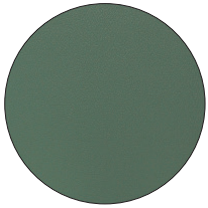


Celadonw

Grade A | Esprit



Dusty Jade



North Woods



Irish Spring



Olive Green



Artichoke



Green Tea



Taupe



Tea Leaf



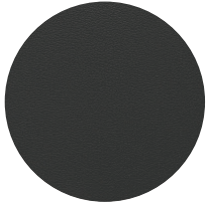
Mocha



Chestnut



Espresso



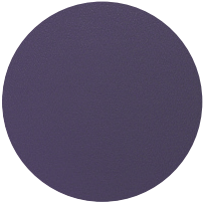
Black



Burgundy



Concord



New Purple



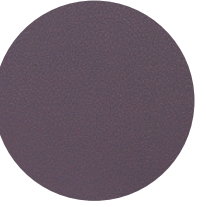
Purple Iris



Grape



Plum



Wood Violet



Iris



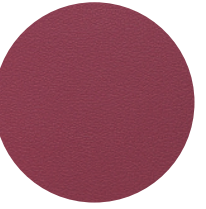
Blush



Mauve White



Tea Rose



Sangria



Candy Apple



Wineberry



Deep Clay



Claret

Grade A | Esprit



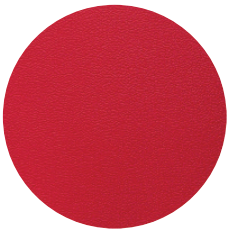
Raspberry



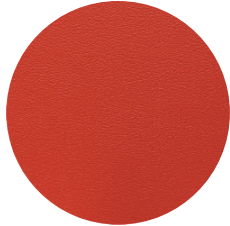
Paprika



American Beauty



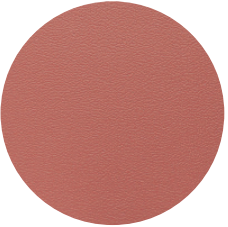
Tomato



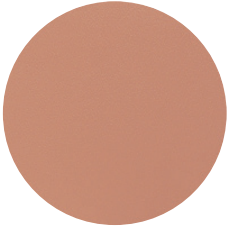
Mandarin Orange



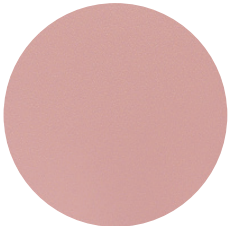
British Tan



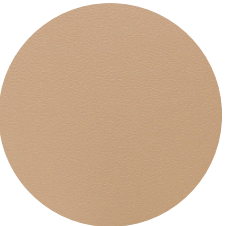
Rose



Peach



Pink



Shell



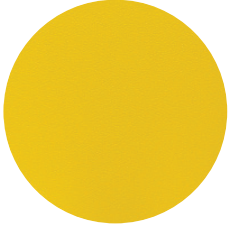
Toast



Parchment



Doe



Sun Yellow



Goldenrod



Saddle Tan



Oak



Dewberry

Grade A | Esprit

Information

GENERAL SPECIFICATIONS

Surface composition	100% PVC
Substrate composition	100% Polyester
Weight	30 oz per linear yard
Width	54"
Thickness	0.97 mm

ADDED PERFORMANCE SPECIFICATIONS

Stain resistance	Yes
Colorfastness to uv	1,000 Hours
Bleach resistance	Yes, 10% Dilution
Mildew resistant	Pass
Cold crack	-20° F
Sulfide stain resistance	Yes

PHYSICAL PERFORMANCE SPECIFICATIONS

Abrasion resistance	250,000+ Double Rubs
Breaking strength	95 Warp, 73 Fill
Crocking resistance	5 Dry, 5 Wet
Flex resistance	25,000+
Tear strength: tongue tear	11.9 Warp, 15.4 Fill
Seam strength: tack tear	67 Warp, 43 Fill

FLAME RETARDANCY SPECIFICATIONS

California Technical Bulletin 117:2013	PASS
UFAC Class I	PASS
NFPA 260	PASS

REDUCED ENVIRONMENTAL IMPACT

- This product does not pose any exposure risks associated with the chemicals in prop 65 no added flame retardant chemicals - ab2998 compliant
- No added anti-bacterial chemicals 7p phthalate free
- Lead / heavy metal free
- Bpa free / PFAS free / tris free / formaldehyde free does not contain conflict minerals

CLEANING AND MAINTENANCE

- For light soiling, clean the soiled area with mild soap and water, then rinse with fresh water and wipe down with a clean cloth.
- For heavy soiling, clean the soiled area with a 50% solution of Isopropyl Alcohol and water. It is important to rinse the cleaned area with fresh water after applying the alcohol solution.
- For food stains or oil, Wipe affected area with a soft cloth or soft bristle brush using a none abrasive cleaner, for example Formula 409 or Fantastik. Rinse with fresh water and wipe dry.
- For healthcare and disinfection, Clean the soiled area with a 10% solution of Household Bleach and water. It is important to rinse the cleaned area with fresh water after applying the bleach solution.

**NOTE: Test on a hidden area before applying to the stain.
DO NOT USE WITH ALCOHOL-BASED CLEANING AGENTS**

Grade B | NaugaSoft

by NaugaHyde

Premium Vinyl

*Available By Request Only

Our Grade B material is a premium vinyl offering a soft, leather-like feel with exceptional durability and versatility. This high-performance material is engineered to withstand wear and tear, making it resistant to fading, stains, and abrasions.



Grade B | NaugaSoft



34-Soft-White



35-Fawn



44-Cream



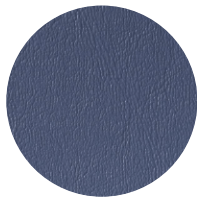
48-Doeskin



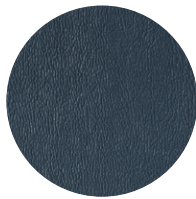
37-Feather



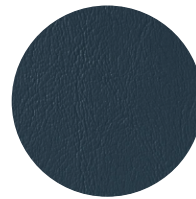
46-Blue-Fog



50-Lake-Louise



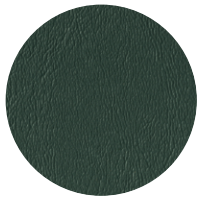
55-Deep Sapphire



54-Mallard-Blue



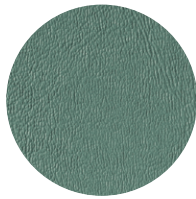
40-Black-Satin



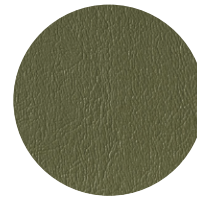
49-DeepSea



39-Laurel



45-MintLeaf



53-Ivy



51-Cocoa



43-VelvetBrown



42-Rose-Blush



52-Saddle



47-Tapestry Red



38-Harness



41-Mulberry



36-Cabernet

Grade B | NaugaSoft

Information

GENERAL SPECIFICATIONS

Surface composition	100% PVC
Substrate composition	100% Polyester
Weight	30 oz per linear yard
Width	54"
Thickness	0.97 mm

ADDED PERFORMANCE SPECIFICATIONS

Stain resistance	Yes
Colorfastness to uv	1,000 Hours
Bleach resistance	Yes, 10% Dilution
Mildew resistant	Pass
Cold crack	-20° F
Sulfide stain resistance	Yes

PHYSICAL PERFORMANCE SPECIFICATIONS

Abrasion resistance	250,000+ Double Rubs
Breaking strength	95 Warp, 73 Fill
Crocking resistance	5 Dry, 5 Wet
Flex resistance	25,000+
Tear strength: tongue tear	11.9 Warp, 15.4 Fill
Seam strength: tack tear	67 Warp, 43 Fill

FLAME RETARDANCY SPECIFICATIONS

California Technical Bulletin 117:2013	PASS
UFAC Class I	PASS
NFPA 260	PASS

REDUCED ENVIRONMENTAL IMPACT

- This product does not pose any exposure risks associated with the chemicals in prop 65 no added flame retardant chemicals - ab2998 compliant
- No added anti-bacterial chemicals 7p phthalate free
- Lead / heavy metal free
- Bpa free / PFAS free / tris free / formaldehyde free does not contain conflict minerals

CLEANING AND MAINTENANCE

- For light soiling, clean the soiled area with mild soap and water, then rinse with fresh water and wipe down with a clean cloth.
- For heavy soiling, clean the soiled area with a 50% solution of Isopropyl Alcohol and water. It is important to rinse the cleaned area with fresh water after applying the alcohol solution.
- For food stains or oil, Wipe affected area with a soft cloth or soft bristle brush using a none abrasive cleaner, for example Formula 409 or Fantastik. Rinse with fresh water and wipe dry.
- For healthcare and disinfection, Clean the soiled area with a 10% solution of Household Bleach and water. It is important to rinse the cleaned area with fresh water after applying the bleach solution.

NOTE: Test on a hidden area before applying to the stain.

DO NOT USE WITH ALCOHOL-BASED CLEANING AGENTS

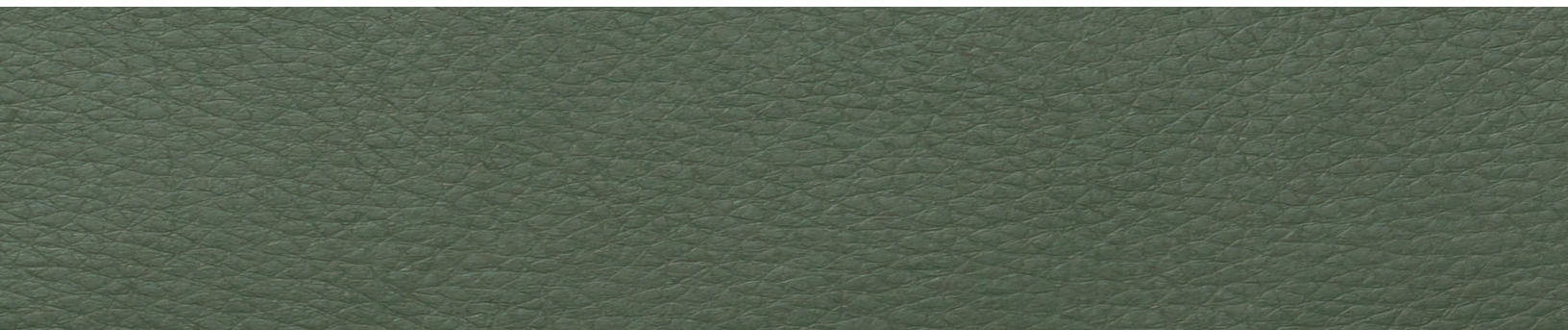
Grade C | Destiny

by Majilite

Nylon Matrix

*Available By Request Only

Our Grade C material is a nylon matrix fabric offering a luxurious, durable finish with a soft texture, engineered for longevity and ease of maintenance. It is resistant to stains, moisture, and wear, making it ideal for high-traffic environments.



Grade C | Destiny



Parchment



Eggshell



Ash



Mink



Truffle



Olive



Cactus



Butter



Dune



Oak



Chestnut



Football



Saddle



Root



Deep Red



Wine



Black Rose



Black



Newport



Mocha

Grade C | Destiny



Storm



Periwinkle



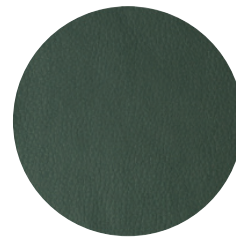
Blueberry



Royal Purple



Otter



Patina



Juniper



Cedar



Evergreen

Grade C | Destiny

Information

GENERAL SPECIFICATIONS

Substrate composition	100% Nylon Fiber Matrix
Weight	8.8 oz/sq yd, 300 g/m ²
Width	54"

PHYSICAL PERFORMANCE SPECIFICATIONS

Abrasion resistance	1,000,000 Double Rubs
Cold crack	-28° F
Tear strength: tongue tear	30 lbs x 30 lbs (ASTM D-1117-80)
Seam strength: tack tear	100 lbs x 100 lbs (ASTM D-1683-90A)

FLAME RETARDANCY SPECIFICATIONS

California Technical Bulletin 117:2013	PASS
UFAC Class I	PASS
NFPA 260	PASS
Tunnel Test	PASS

REDUCED ENVIRONMENTAL IMPACT

- This product does not use PVC's, plasticizers, phthalates, formaldehyde, lead, cadmium, dioxins, or ozone-depleting chemicals in our products or in their production.
- Majillite products Pass CA Section 01350 (VOC emissions), are REACH compliant and meet CAL 117-2013 and NFPA 260 without the addition of flame retardant chemicals
- Proposition 65 Statement available upon request

CLEANING AND MAINTENANCE

- Use a clean cloth or soft sponge to dab the stain with soapy water, mixed according to the manufacturer's directions. Remove the soap solution by wiping the area with a cloth and clean water. Dry with a soft lint-free cloth or towel.
- Very stubborn stains or non-water soluble stains can be removed with a mild solvent such as naphtha (lighter fluid, paint thinner). Lightly wipe the stain with a clean cloth which has been moistened with solvent. Blot the area with a dry cloth and allow to dry.
- Many ink and magic marker stains can be removed using a solution of one part Wisk detergent and one part rubbing alcohol. Dab lightly with a cloth which has been moistened with the solution. Do not rub. As the ink loosens, blot the area with a dry cloth. Repeat if necessary. Rinse with a cloth damp-ened in clean water, and dry with a soft cloth.
- For commercial installations use mild soap and water for general cleaning.

NOTE: Test on a hidden area before applying to the stain.

DO NOT USE WITH ALCOHOL-BASED CLEANING AGENTS