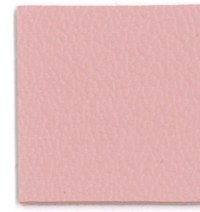


ESPRIT

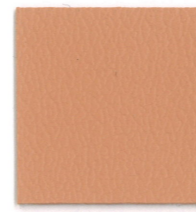
Grade A



American Beauty
PES-004



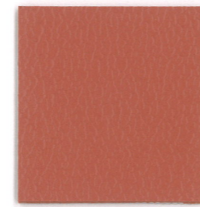
Pink
PES-050



Peach
PES-049



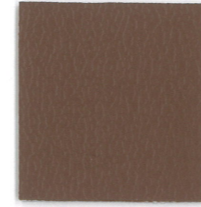
Iris
PES-036



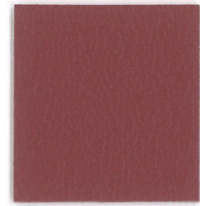
Rose
PES-056



Mauve
PES-040



Dewberry
PES-021



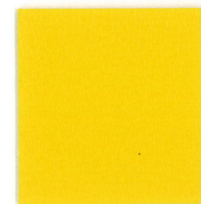
Tea Rose
PES-069



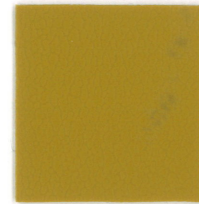
Raspberry
PES-054



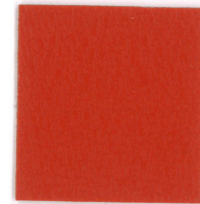
Sangria
PES-060



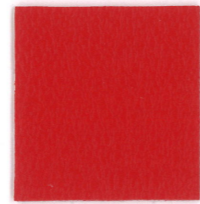
Sun Yellow
PES-064



Goldenrod
PES-029



Mandarin Orange
PES-038



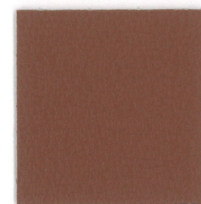
Tomato
PES-071



American Beauty
PES-004



Candy Apple
PES-014



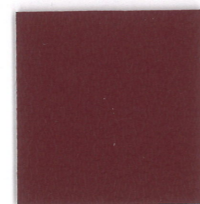
Blush
PES-011



Deep Clay
PES-020



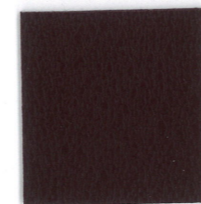
Paprika
PES-047



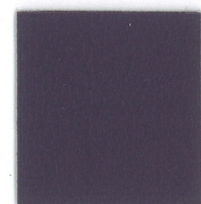
Wineberry
PES-073



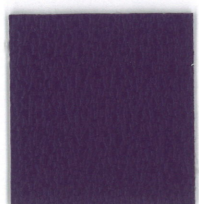
Claret
PES-017



Burgundy
PES-013



Wood Violet
PES-074



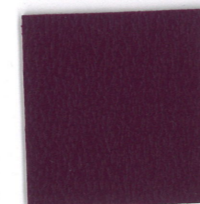
Purple Iris
PES-053



New Purple
PES-042



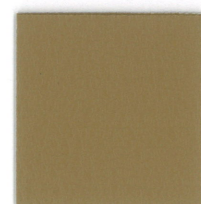
Plum
PES-052



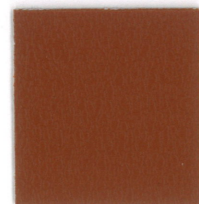
Grape
PES-030



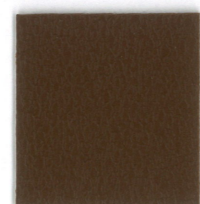
Concord
PES-019



Saddle Tan
PES-058



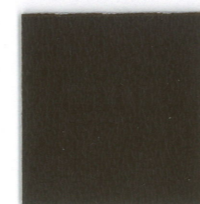
British Tan
PES-012



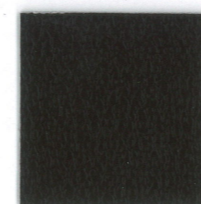
Chestnut
PES-016



Tea Leaf
PES-068



Mocha
PES-041



Espresso
PES-026



Snow White
PES-062



Super White
PES-065



Adobe White
PES-001



Alabaster
PES-003



Taupe
PES-066



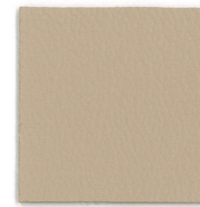
Green Tea
PES-032



Parchment
PES-048



Sand
PES-059



Toast
PES-070



Shell
PES-061



Doe
PES-022



Oak
PES-044



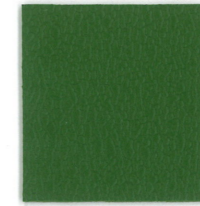
Celadon
PES-015



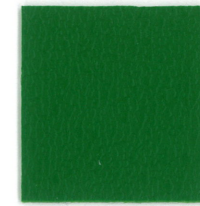
Artichoke
PES-007



North Woods
PES-043



Olive Green
PES-046



Irish Spring
PES-037



Emerald
PES-025



Teal
PES-067



Aegean
PES-002



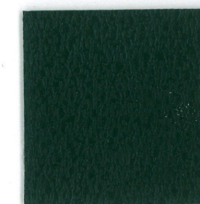
Aqua Green
PES-006



Grotto
PES-033



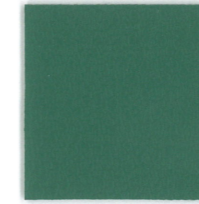
Forest
PES-028



Yew Green
PES-075



Vizcaya Palm
PES-072



Dusty Jade
PES-024



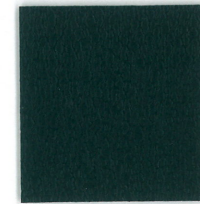
Ocean Grey
PES-045



Space Blue
PES-063



Colonial Blue
PES-018



Aqua Dark
PES-005



Blue Ridge
PES-010



Marina
PES-039



Royal
PES-057



Blueberry
PES-009



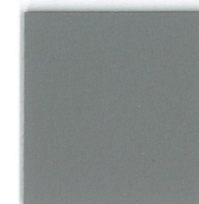
Regimental Blue
PES-055



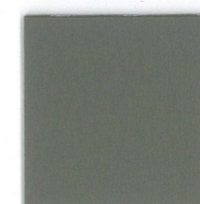
Imperial Blue
PES-035



Flint Grey
PES-027



Dove
PES-023



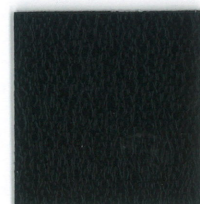
Platinum
PES-051



Gunmetal
PES-034



Graphite
PES-031



Black
PES-008

ESPRIT

**RESILIENCE™****GENERAL SPECIFICATIONS**

CONTENT	Surface: 100% PVC (7P Phthalate Free) Backing: 100% Brushed Polyester Knit
WIDTH	54"
WEIGHT	30 oz.
ROLL SIZE	30 yards
STAIN RESISTANCE	Resilience™



*ACT® Registered Certification Marks

PERFORMANCE SPECIFICATIONS

Abrasion Resistance	250,000+ Double Rubs	ASTM D4157-13 Wyzenbeek
UV Resistance	500 Hours	ASTM G154-16
Colorfastness to Crocking	5.0 Wet 5.0 Dry	AATCC 8-2016
Anti-Microbial	Pass	ASTM G21-13
Anti-Bacterial	Pass	AATCC 147-2011
Mildew Resistance	Pass	ASTM G21-13
Cold Crack	-20° F	CFFA 6a-2010
Bleach Resistance	10% Dilution	AATCC 107-2013
Sulfide Stain Resistance	Yes	

FLAMMABILITY REQUIREMENTS**

California Fire Code Technical Bulletin No. 117-2013
 NFPA 260
 UFAC Class I
 IMO 2010 FTP Code, Part 8
 FMVSS 302

Suitable For:

Hospitality, Healthcare, Contract, Education, Marine, Automotive, RV, Residential

Reduced Environmental Impact

Phthalate Free
 Lead Free
 BPA Free/TRIS Free/Formaldehyde Free
 Does not contain Conflict Minerals

CARE AND CLEANING

Prompt cleaning is always recommended. Cleaning steps are listed by type of stain.

Regular Cleaning and Maintenance

Clean the soiled area with mild soap and water, then rinse with fresh water and wipe dry with a clean cloth.

Dirt
Grime

Food Stains / Oils

Wipe affected area with a soft cloth or soft bristle brush using a non-abrasive cleaner, for example Formula 409 or Fantastik. Rinse with fresh water and wipe dry.

Mustard
Ketchup
Chocolate
Coffee/Tea
Salad Dressing

Healthcare

Clean the soiled area with a 10% solution of Household Bleach and water. It is important to rinse the cleaned area with fresh water after applying the bleach solution.

Blood
Urine
Iodine
Betadine

Difficult Stains

Clean the soiled area with a 50% solution of Isopropyl Alcohol (Rubbing Alcohol) and water. It is important to rinse the cleaned area with fresh water after applying the alcohol solution.

Mascara
Lipstick
Hairspray
Grease
Motor Oil
Soy Sauce
Coffee

The use of commercial vinyl conditioners and protectants is not recommended.

Note: The information in this cleaning guide refers to performance in specific tests conducted under laboratory conditions. This information is not a guarantee that every stain will be removed completely. Some residual ghosting may be present after all cleaning steps are followed.

Resilience™ is a trademark of Nassimi LLC

⚠WARNING: This product can expose you to chemicals, including Antimony Trioxide, which is known to the State of California to cause cancer. For more information, go to <https://www.p65warnings.ca.gov>

**This term and any corresponding data refer to typical performance in the specific tests indicated and should not be construed to imply the behavior of this or any other material under actual fire conditions

SEDUCTION



Single Malt
SSE-023



Chanterelle
SSE-006



Flan
SSE-009



Ginger
SSE-010



Alpaca
SSE-001



Porcelain
SSE-019



Oyster
SSE-017



Pistachio
SSE-018



Mermaid
SSE-014

Grade B



Sassafrass
SSE-022



Lagoon
SSE-013



Cabo
SSE-003



Eucalyptus
SSE-007



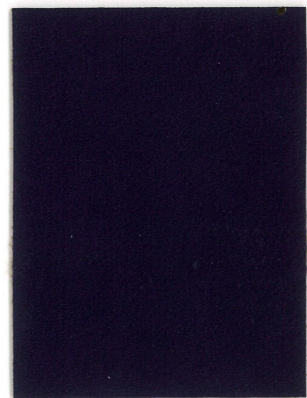
Pumpkin Pie
SSE-020



Kiss
SSE-012



Heartbeat
SSE-011



Verbena
SSE-025



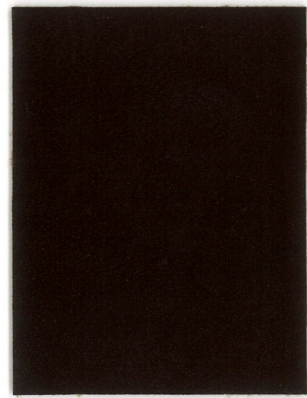
Brownie
SSE-002



Russet
SSE-021



Cacao
SSE-004



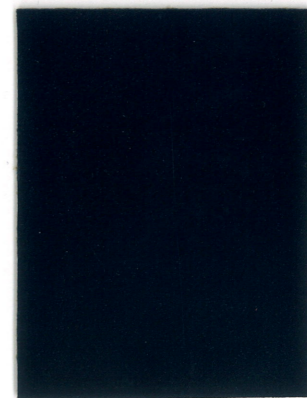
Carob
SSE-005



Fedora
SSE-008



Statue
SSE-024



Night Sky
SSE-015



Obsidian
SSE-016

SEDUCTION

APPLICATIONS Hospitality, Healthcare, Contract, Education, Marine, Automotive, RV and Residential

GENERAL SPECIFICATIONS

Width 54"
Roll Size 30 Yards
Weight 32 Ounces per Linear Yard
Backing 100% Brushed Polyester Knit

PERFORMANCE SPECIFICATIONS

Abrasion Resistance 500,000+ Double Rubs Per ASTM D4157-10 Wyzenbeek
Mildew Resistance Pass per ASTM G21-96(2002)
Anti-Bacterial Pass per AATCC 147-2004
Anti-Microbial Pass per ASTM G21-96(2002)
Ultra Violet Resistance 650 Hours per AATCC Test Method 16-2004, Option 3
Cold Crack -20°F per FTMS 191A TM587
Stain Resistant with Resilience^{SR} Protection
Sulfide Stain Resistant

FLAMMABILITY REQUIREMENTS *

California Fire Code Technical Bulletin No. 117, Section E
 UFAC Class 1 BIFMA NFPA 260
 MVSS 302 IMO A.652(16)8.2 and 8.3 ASTM E84 (Adhered & Un-Adhered): Class 1 or A Rating
 May Comply with California 133 when Tested with Suitable Components

CLEANING INSTRUCTIONS

Prompt cleaning is always recommended. Ordinary dirt and stains can be removed with mild soap and water. Rinse the cleaned area with clean water and dry with a lint-free cloth. Seduction will resist, without serious discoloration, the repeated actions of normal dilutions of non-abrasive chlorine or ammonia-based cleaners.

ENVIRONMENTAL COMPLIANCE

Seduction is formulated to comply with California Proposition 65 as well as the European Standard EN-71.



Resilience^{SR} represents the latest technology in Faux Leather and Vinyl Protection, enhancing performance where it is needed the most:

STAIN RESISTANCE: With proper care, materials treated with **Resilience^{SR}** can be easily cleaned and will guard against stains maintaining the desired surface appearance for years to come.

ANTI-MICROBIAL & ANTI-BACTERIAL PROTECTION: Products treated with **Resilience^{SR}** are engineered to inhibit bacterial growth, as well as fungus, mold and spores, resulting in a more hygienic environment.

ABRASION RESISTANCE: **Resilience^{SR}** provides additional wear properties and surface durability to any Vinyl or Faux Leather, thereby increasing the life of the material.

Resilience^{SR} is not visible, and does not affect the hand of the material. **Resilience^{SR}** is engineered to last, even after repeated cleaning and wear. Specify **Resilience^{SR}** for the most demanding healthcare and hospitality applications.

PROP 65 WARNING: This product may contain a chemical known to the State of California to cause cancer and birth defects or other reproductive harm.

* This term and any corresponding data refer to typical performance in the specific tests indicated and should not be construed to imply the behavior of this or any other material under actual fire conditions. 6.13

Nauga Soft

Genuine
NAUGAHYDE[®]
BRAND FABRIC



CONTRACT

HOSPITALITY

HEALTHCARE

TRANSPORTATION

MARINE

Grade C



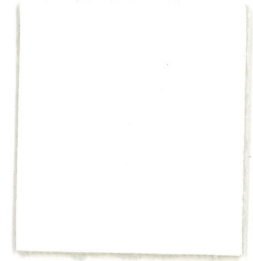
PR 49 Deep Sea



PR 48 Doeskin



PR 44 Cream



PR 34 Soft White



PR 43 Velvet Brown



PR 51 Cocoa



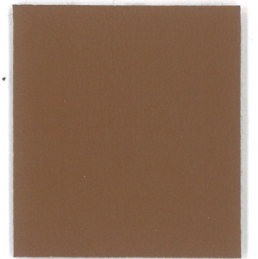
PR 35 Fawn



PR 36 Cabernet



PR 38 Harness



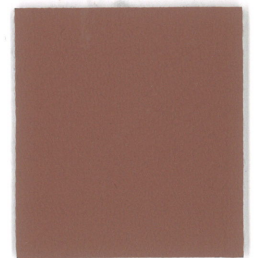
PR 52 Saddle



PR 41 Mulberry



PR 47 Tapestry Red



PR 42 Rose Blush



PR 55 Deep Sapphire



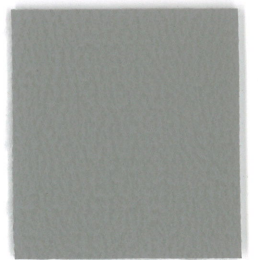
PR 50 Lake Louise



PR 54 Mallard Blue



PR 46 Blue Fog



PR 37 Feather



PR 40 Black Satin



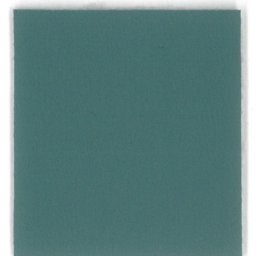
PR 49 Deep Sea



PR 39 Laurel



PR 53 Ivy



PR 45 Mint Leaf

NAUGAHYDE
BRAND FABRIC

Nauga Soft

Grade C



Physical Properties

- Roll Width: 54"
- Roll Length: 35 yards
- Weight per Lin. Yard: 28.2 oz.
- Pattern Repeat: N/A

Performance Properties

- Sulfide Stain Resistant
- ASTM E 1428-Pink Stain Test
- Oil Resistant
- Cold Crack: -20°
- Mildew Resistant
- Ultraviolet Stable Pigment
- Static Dissipative
- Abrasion #8 Cotton Duck
1,000,000 dbl rubs

Flammability Performance

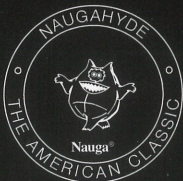
- Cal. Fire Code 117
- MVSS-302
- BIFMA Class I

Disinfectability

Naugahyde with Advanced BeautyGard® has been formulated to achieve a superior level of disinfectability with disinfectant products containing sodium hypochlorite (common household bleach) diluted 1:10.

Serviceability

Advanced BeautyGard® protective top coat finish is produced from environmentally friendly materials and processes and is technically formulated to achieve the highest performance standards.



J. ENNIS FABRICS

Canada Wide: English: 1-800-66-ENNIS Français: 1-888-66-ENNIS US Wide: 1-877-95-ENNIS

TORONTO • EDMONTON • VANCOUVER • INDIANAPOLIS
www.jennisfabrics.com



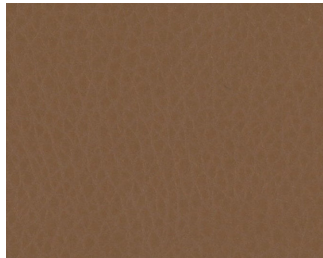
Destiny fabric

by Majilite

Grade G



Dune



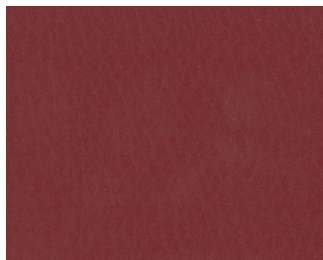
Oak



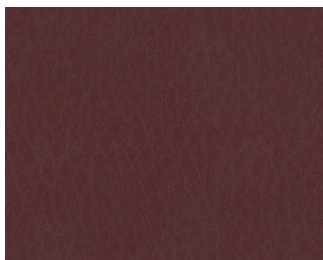
Football



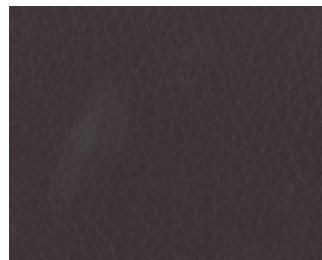
Root



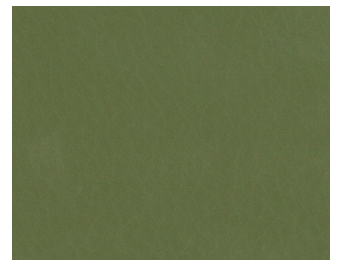
Deep Red



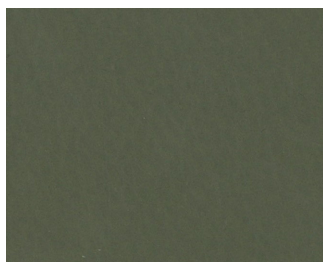
Wine



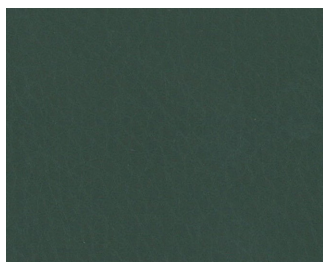
Raisin



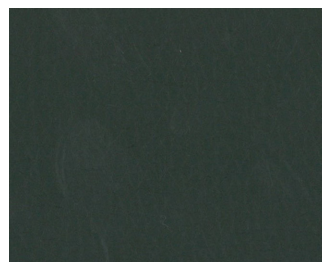
Cactus



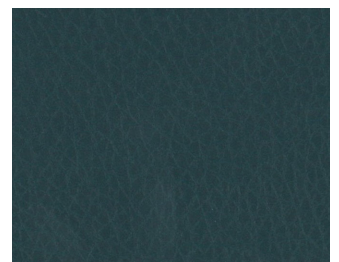
Olive



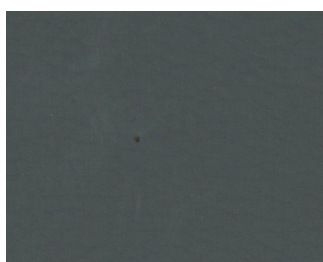
Juniper



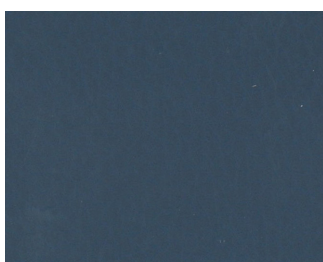
Evergreen



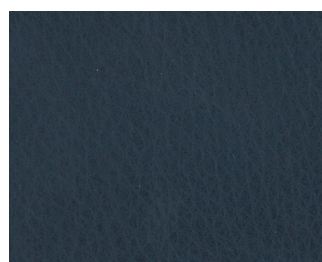
Patina



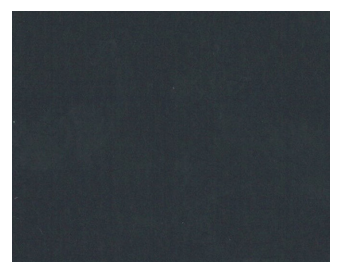
Storm



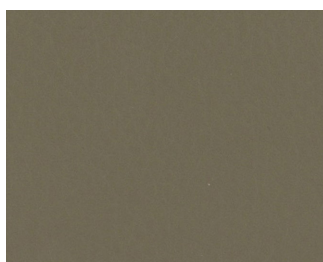
Periwinkle



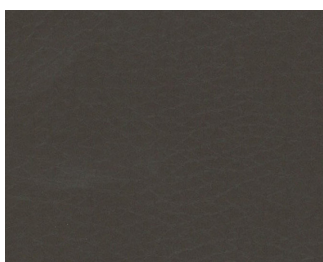
Blueberry



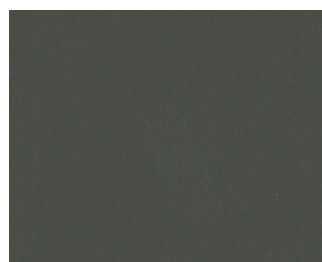
Newport



Truffle



Mocha



Otter



Black

ARCONAS

Grade J

1-800-387-9496



ELeather.

LEATHER - EVOLVED

Upholstery

COLLECTION

Comfort Range

MATERIAL SWATCHES

Leather fibre. Evolved for upholstery

Upholstery COLLECTION

COMFORT RANGE

The Upholstery Collection is the ideal solution to create stylish yet practical interior spaces for airport terminals, leisure and hospitality venues. The high-performance material offers a luxury and quality finish with a durability that outlasts alternative interior textiles.

The range of colours displayed on this card are available as Stock colours (2 working days lead time) or Additional colours (up to 5 weeks lead time), however custom colours and grains can be specified on request.

Stock colours



2979



2980



3137



3131



2976

Additional colours
(70M² MOQ)

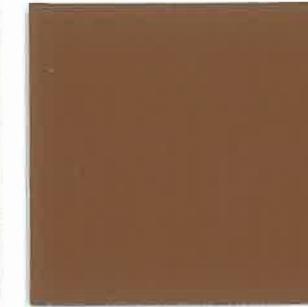
Grade J



3133



3136



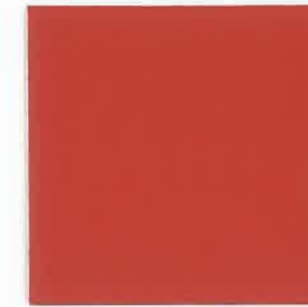
3135



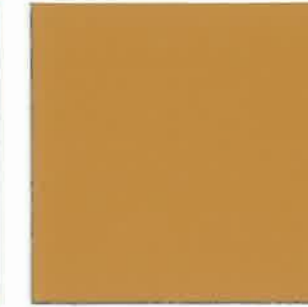
3130



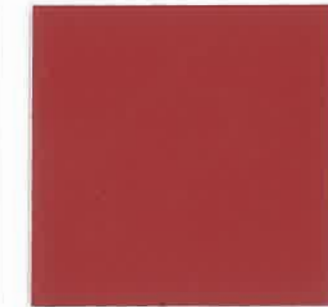
2978



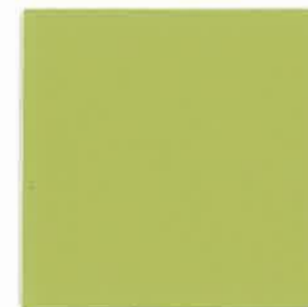
2990



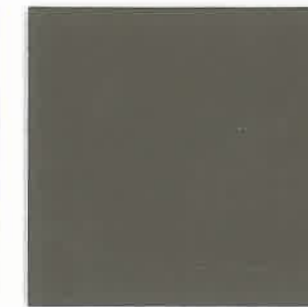
3134



3128



3132



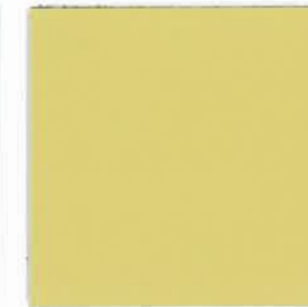
2993



2991



3129



2977



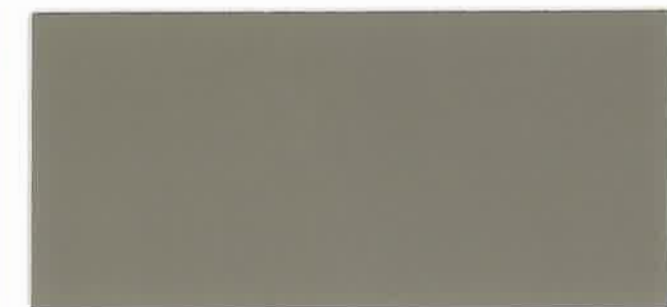
2982



2989



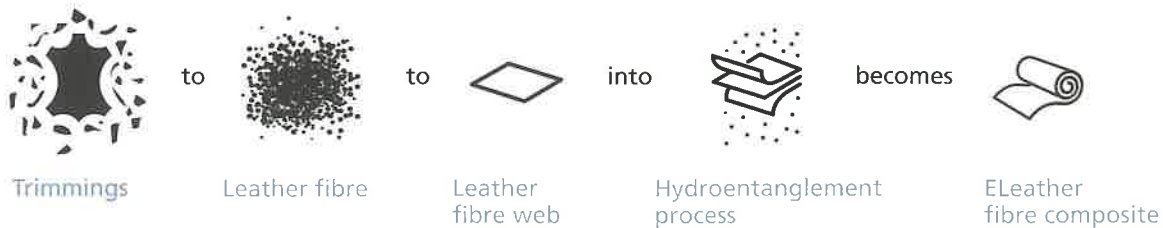
2984



2992

How it's made

Taking our most precious commodity – water – ELeather developed and patented a manufacturing process that uses hydroentanglement technology to lock traditional leather fibres within a high-performance core. The end result – a stronger, lighter high-performance material.



We have evolved our leather fibre for

Greater responsibility

Taking more care of the world's most precious resources builds better reputations.

Superior performance

Unrivalled material performance increases margins and competitive advantage.

Exceptional experiences

Memorable brand experiences create happy customers and more growth potential.

eleathergroup.com

ELeather, Kingsbridge Centre, Sturrock Way, Peterborough, PE3 8TZ, UK
Tel: +44 (0) 1733 843939 Fax: +44 (0) 1733 843940 Email: info@eleathergroup.com

