

ARCONAS



Setz™

DESIGNED BY ARCONAS

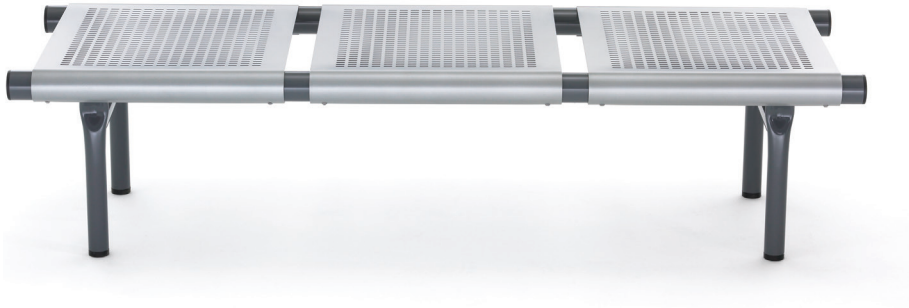


Setz™

With its versatile design and rugged steel construction, Setz (from the German "setzen," to sit) provides a modular public seating solution for high impact waiting areas in justice, healthcare, education, government, and passenger terminals. Setz benches and tables offer more choices for specific needs.



48" Upholstered Bench



72" Perforated Bench

Design

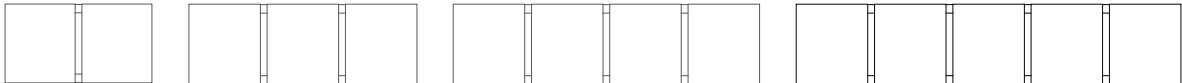
The post and beam steel construction of Setz ensures strength, stability and an everlasting performance. Setz is designed in linear, back-to-back, and bench unit rows. Optional end tables may be free standing or connected to any seat unit. Modularity allows Setz to be configured with or without arms and upholstery pads - both options are retrofittable and can be easily added on-site. A cluster unit accommodates group settings and consists of six seats arranged around a central table.

High Performance

Setz is built with rugged all steel components to withstand the rigors of continual use in public environments. The heavy-duty seat pans are made from 12 gauge steel and have flanged and flattened edges to maintain the seat's contours over time. Seat pans are supported by cylindrical posts and beams constructed from 14 gauge steel. Setz finishes are eco-friendly power coated in Arconas standard colours.

Environmentally Friendly

Creating environmentally friendly seating is a tradition at Arconas. Our foam incorporates BioH® polyols derived from soybean oil - a renewable resource, and contains no harmful CFCs and emits no harmful fumes. Our manufacturing process creates minimal waste. All foam and metal components are recyclable. Our public seating products pass ANSI/BIFMA Emissions Standards X7.1-2007 and can help customers achieve LEED credits for commercial interiors.



SELECT INSTALLATIONS:

Brampton Courthouse, ON
Social Security Administration Offices, USA
Budapest Ferihegy International Airport, Hungary
Camp Fallujah Military Base, Iraq
Stanislaus Superior Court, CA
St. Joseph Hospital Centre for Health Science, ON
WIC (Women, Infants & Children) Offices, USA



Setz™

A unique concept in steel.
A strong statement in design.
A rugged structure in function.





**Setz Bariatric with corner table
and 2 seat unit with arms**

Bariatric Seating

The robust post and beam steel construction provides the strength needed in a bariatric application. Ergonomically contoured seat pans are 30" wide and made from perforated steel. Seating access is enhanced with optional 19.5" seat height. Comfortable and durable seating for healthcare facilities, the Setz bariatric single seat unit can accommodate static loads up to 1,000 pounds.



Outdoor Seating

Setz is suitable for outdoor settings, requiring a zinc-plated undercoat and clear top coat to preserve its finish.

Safety and Security

The minimal floor contact points of Setz provide clear under-seat sightlines for security personnel. For high security environments, the steel beams may be sealed shut. Optionally, Setz may be assembled using tamper-resistant hardware and can be fixed to the floor. The seating system exceeds ANSI/BIFMA X5.4 Standards, assuring consumer safety.

Installation and Configuration

Setz is offered in linear units of two to five seats, back-to-back units of four to eight seats, single seat bariatric and two to five seat benches. Linear and back-to-back rows are easily extended with discreet connectors. Optional end tables can be connected to any linear or back-to-back seat unit. A six-seat cluster is also available and design to be arranged with Setz linear units.

Easy Maintenance

Floor maintenance is easy under Setz because of its clear sightlines and the minimal floor contact points. Setz's modular design and minimum number of parts ensures trouble-free maintenance over the unit's lifetime. Seats and frames are easy to clean using mild soap and water and the upholstery pads are easily replaced on-site.



Setz™ Cluster
Papillon Airways, Heliport, Las Vegas, NV



Six seat cluster unit, with central table



Cluster duo with 2 seat back-to-back units

Setz Cluster

Setz Cluster consists of a six-seat unit with central table. Cluster units create inviting waiting areas, while offering increased personal space and a table surface. The post and beam steel construction supports the large central table on the seat frames providing sufficient space for all occupants to work or relax. The floating tabletop allows for easy maintenance and clear security sightlines.

Seating Layouts

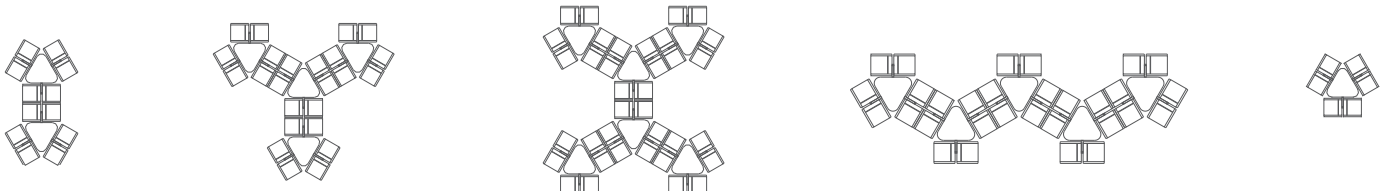
Clusters may be connected to form semi-circular seating arrangements suitable for families and small groups. Combine Cluster units with linear Setz seating to create further interest.

Fire Rating

Setz passes the most rigid fire standards in North America CAL 133 and in Europe (British Standard-5852).

Branding Solutions

Setz seatbacks may be embroidered with corporate and sponsorship logos. The upholstered pads can be colour coordinated with company logos for brand identity. Embroidered seatbacks may also include symbols such as available power and accessible seating. Setz upholstered seatbacks can be easily replaced on-site by the removal of four screws.



Designer
Arconas

The rugged design and versatility of Setz meets the demands of high traffic public spaces, including passenger terminals, government offices, healthcare and educational facilities and justice centres. Appropriate for use indoors and outdoors, Setz provides reliable, durable and comfortable public seating with trouble-free maintenance.

SEATING UNITS, TABLES & BENCHES

construction

- Supports
 - Tubular steel
- Seats
 - Perforated steel
- Arms
 - Steel
- End Caps & Glides
 - Nylon
- End Tables
 - Perforated steel

options

- Arms
- Floor mounting glides
- Wall mount option available on SETZ2S and SETZ3S only
- Custom embroidery on seatback
- In-line connector
- "T" connector secures units at 90 degrees

special safety features

- Tamper resistant screws
- Closed steel beam

upholstered pad options

- Upholstered seat and back pad
- Seat or back pad only
- Without pads

FINISHES

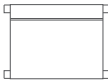
metal finishes

- Arconas standard powder coat finishes
- Clear top coat recommended for metallic finishes and for outdoor use
- Zinc plated undercoat available for outdoor use

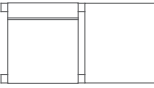
cluster tabletop finishes

- Laminate over wood core
- Arconas standard laminates with vinyl edge

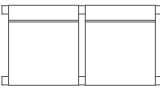
single units

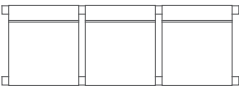
SETZBAR	w 30"	76 cm	
bariatric seat unit	d 23.5"	60 cm	
	h 30.5"	77 cm	
	sh 17.5"	44 cm	

*optional seat height 19.5"

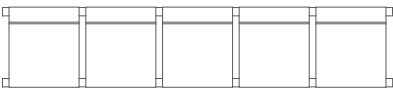
SETZ1S	w 25"	64 cm	
single seat unit	d 23.5"	60 cm	
	h 30.5"	77 cm	
	sh 17.5"	44 cm	


*single seat unit must be adjacent to table

SETZ2S	w 48"	122 cm	
two seat unit	d 23.5"	60 cm	
	h 30.5"	77 cm	
	sh 17.5"	44 cm	

SETZ3S	w 71"	180 cm	
three seat unit	d 23.5"	60 cm	
	h 30.5"	77 cm	
	sh 17.5"	44 cm	

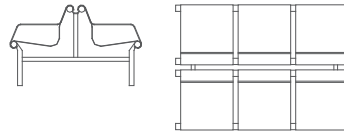
SETZ4S	w 94"	239 cm	
four seat unit	d 23.5"	60 cm	
	h 30.5"	77 cm	
	sh 17.5"	44 cm	

SETZ5S	w 117"	297 cm	
five seat unit	d 23.5"	60 cm	
	h 30.5"	77 cm	
	sh 17.5"	44 cm	

SETZARM	w 2"	5 cm	
arm	d 23.5"	60 cm	
	ah 24"	61 cm	

back-to-back units

two to four seats per side



cluster unit

SETZCLUSTER	w 96"	244 cm	
six seat cluster unit	d 83.5"	212 cm	
	h 30.5"	77 cm	
	sh 17.5"	44 cm	

benches

SETZ2B	w 44"	112 cm	
two seat bench	d 30.5"	77 cm	
	sh 17.5"	44 cm	

SETZ3B	w 67"	170 cm	
three seat bench			

SETZ4B	w 90"	229 cm	
four seat bench			

SETZ5B	w 113"	287 cm	
five seat bench			

tables

SETZET	w 21"	53 cm	
end table	d 23.5"	60 cm	
	h 17.5"	44 cm	

SETZDT	w 21"	53 cm	
end table, double for back-to-back units	d 49"	124 cm	
	h 17.5"	44 cm	