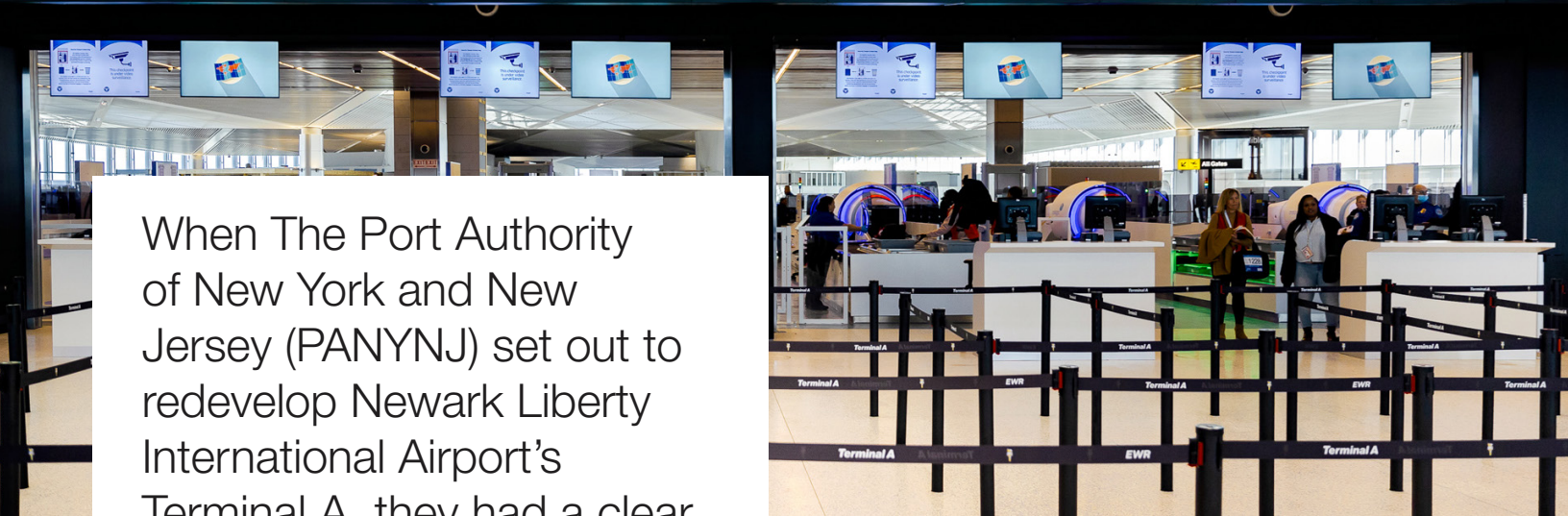


Transforming Newark Liberty International Airport's Terminal A



ARCONAS



When The Port Authority of New York and New Jersey (PANYNJ) set out to redevelop Newark Liberty International Airport's Terminal A, they had a clear vision in mind: to provide a world-class passenger experience that would embody and reflect the spirit of New Jersey and highlight the best of what the state has to offer.

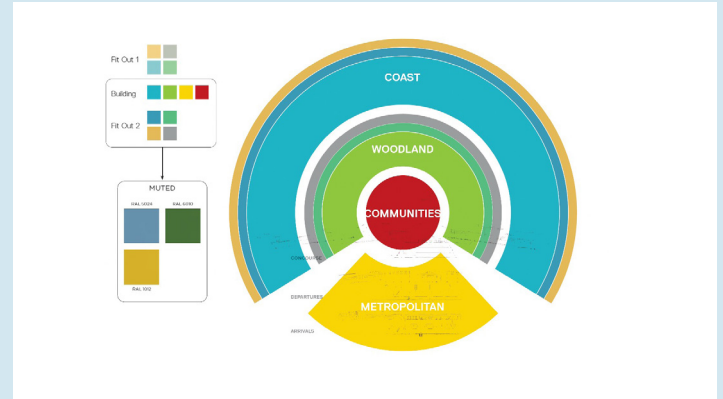
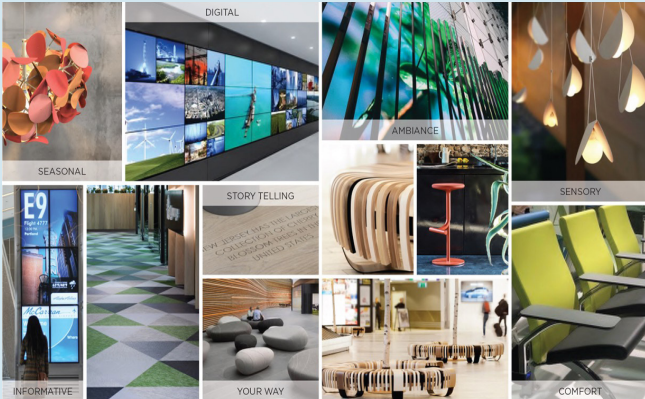
The PANYNJ contracted Munich Airports NJ LLC to build and operate the terminal, who in turn, worked closely with Arconas to bring their vision to life.

The new Terminal A would replace the existing terminal that first opened in 1973 and increase its footprint by 20 per cent. The 1 million-square-foot, state-of-the-art facility would be the largest design-build in New Jersey's history and would be able to accommodate an estimated 13.6 million passengers annually.

It was also an opportunity for the PANYNJ to consciously infuse the culture, spirit, and diversity of the local community into all aspects of the terminal to create an authentic New Jersey sense of place.

Munich Airports Group collaborated with Portland Design to develop a design strategy aimed at creating a distinctive identity for New Jersey, setting it apart from neighboring New York.

The Vision



Every aspect of the passenger journey was carefully considered to bring this vision to life. This strategy, known as the "Journey of Surprises," sought to immerse passengers' senses in the diverse sights, sounds, and flavors of the unique regions that define the New Jersey experience: Coastal, Woodlands, and Communities.

Starting with the artwork that greets passengers upon entering the terminal, and extending to digital installations, local businesses, and concessions, as well as furniture and seating options, the goal was to provide a comprehensive sensory experience. Inspiration was drawn from various elements of the passenger journey, such as the digital and informative aspects, the seasonal and sensory components that shape the ambiance, and even the physical path taken by passengers, all contributing to the storytelling of the Journey of Surprises.

Defining the color palette

Coastal

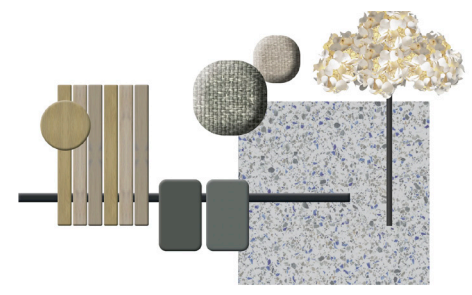
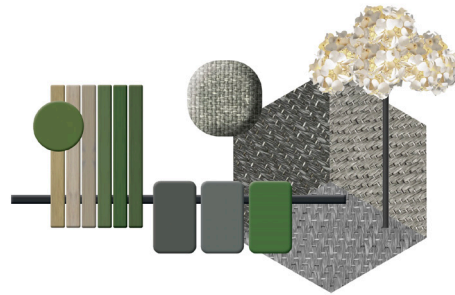
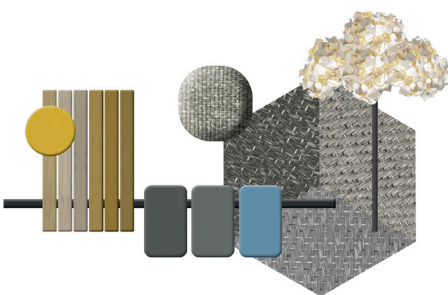
Shades of blues and yellows came together to create a sense of being on the Coast. Green Furniture recliners accented with seagrass-filled planters brought the feel of relaxing on the Jersey Shore into the terminal.

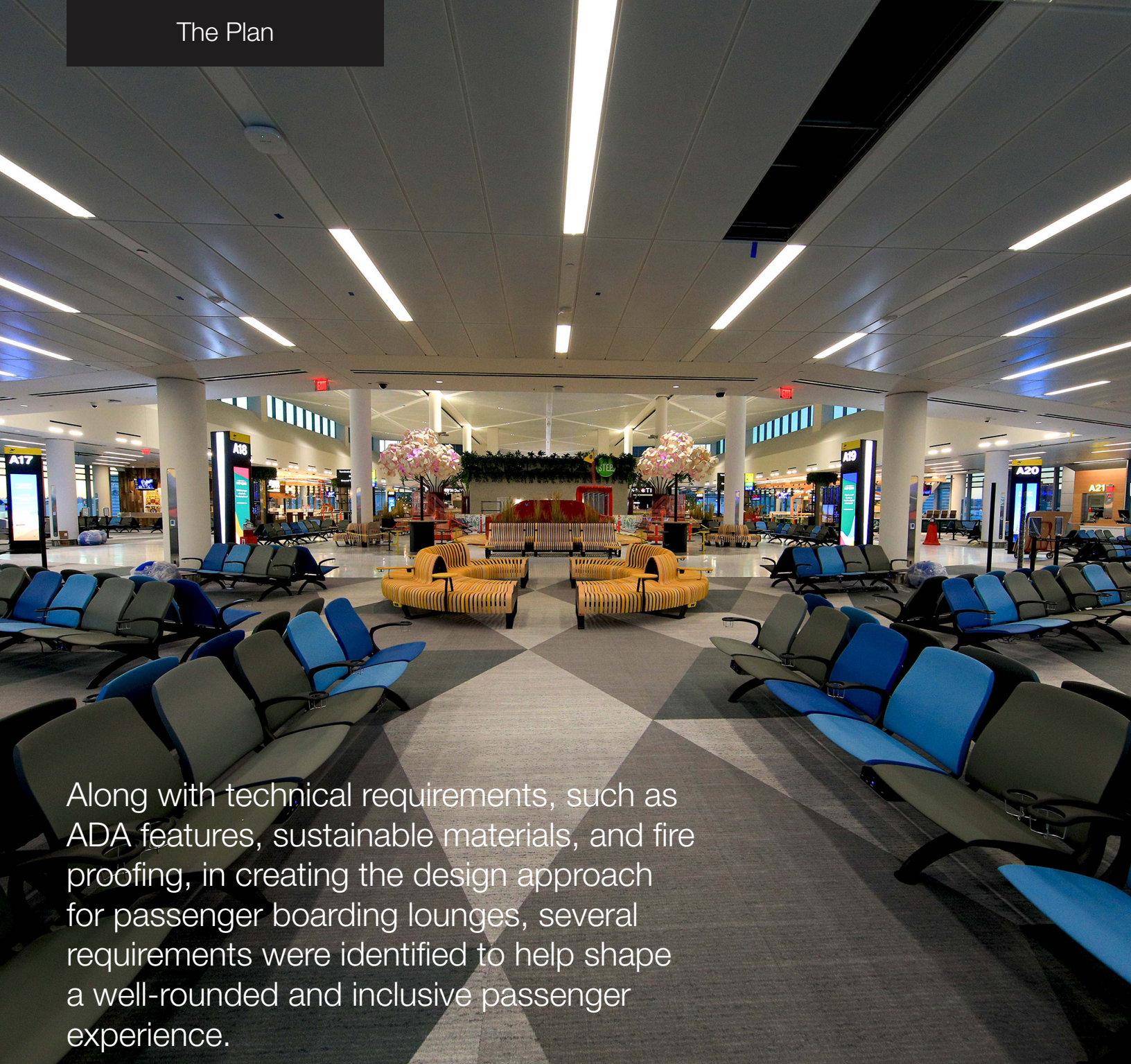
Woodlands

To reflect the natural beauty of the New Jersey woodlands, shades of green created inviting and calming forest-like spaces within the terminal.

Communities

Neutral shades created urban-like areas to pay homage to the many urban and local communities that surround the airport. Custom Green Furniture workstations created functional surface areas, but the addition of Leaf Lamp Trees, with lighting features that can be changed to reflect the seasons, maintained the calming and whimsical aesthetic.





Along with technical requirements, such as ADA features, sustainable materials, and fire proofing, in creating the design approach for passenger boarding lounges, several requirements were identified to help shape a well-rounded and inclusive passenger experience.

Variation in seating

Providing a variety of seating styles and options would ensure that all passengers would be able to find a comfortable space along their journey.

Functional amenities

Charging stations, work surfaces and connectivity to provide passengers with all the conveniences they might need.

New Jersey flavor

Infuse the flavor and character of New Jersey in all areas to create a distinct and authentic experience.



Munich Airports Group and Portland Design performed an exploratory exercise on what the best furniture options would be to fit their functionality, purpose and aesthetics for an enhanced passenger experience and came up with a specific design vision. When looking for a furniture provider, it was important to stay close to and maintain the integrity of the vision while balancing efficient production.

The project was ongoing in 2020, right as the COVID-19 pandemic came on strong. During this time, everything was up in the air, with a lot of challenges and uncertainty happening at every turn. There were delivery, logistical and supply chain challenges.

Construction schedules and timelines were constantly changing. Munich Airports Group shared their design vision with Arconas and identified the challenges as they saw them, including the bespoke nature of their seating concepts, supply chain, manufacturing and delivery. All aspects of the project needed to be thought through. Everyone was operating in a strange new environment with no precedents and constantly changing rules of operation. How would these new challenges impact the materials being used in the airport? How would the impact of COVID-19 affect airport terminals function? What new features would be needed – short & long term?

Arconas collaborated closely with Munich Airports Group to come up with customizations to existing products to address challenges and propose ways to streamline the vision to simplify production. Adaptations were made to improve maintainability and lifecycle costs.

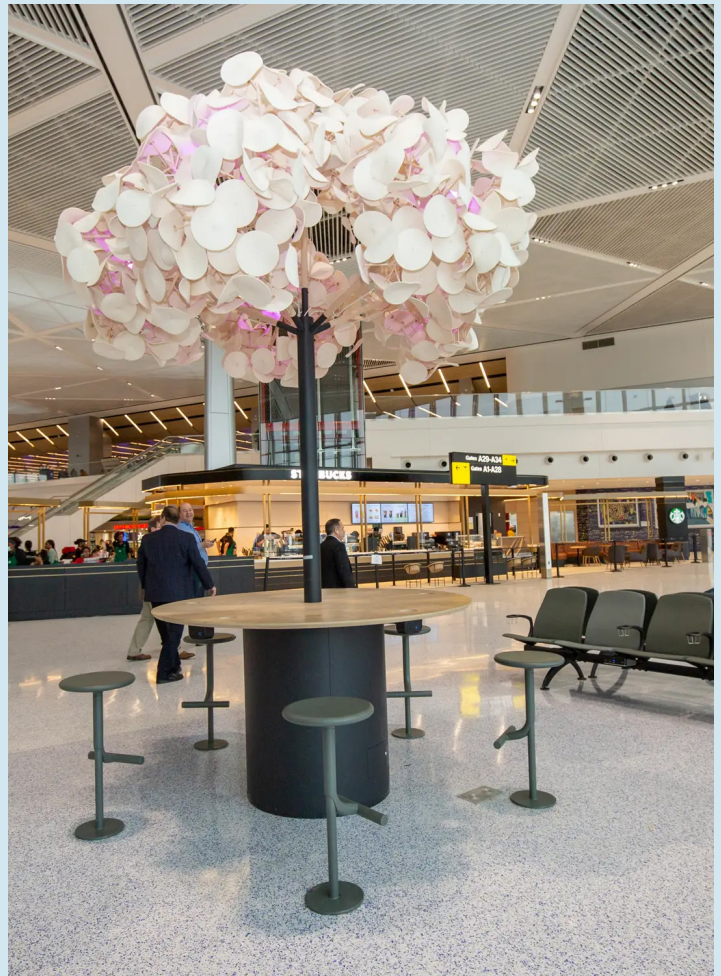


Arconas' comprehensive product line was key in being able to provide what was proposed with minimal customization. The concept of the community bench was achieved by using Green Furniture Concept's Nova C bench, with custom finishes to match the proposed color palettes for each region.

The people watcher bench was proposed to give passengers the feeling like they're relaxing on the Jersey Shore. This was also achieved using Green Furniture Concept's Nova C reclining benches.

Custom-designed Green Furniture Concept workstations using the Seamless Table created functional surface areas, but the addition of Leaf Lamp Trees added a calming and whimsical feel.

Arconas supplied its Bernù Poly tandem seating in custom colors with powder-coated Blackstone finishes to bring the vision to life.





inPower flex 3 and Green Furniture Concept's power modules were included on all seating, some in fun, complimentary colors, so that power is readily available for passengers on multiple platforms: USB-A, USB-C, AC, and wireless charging.

To help streamline procurement and delivery, Arconas used its overseas expertise to procure and import Smarin's Pebbles in passenger boarding areas to provide a casual and playful feel.

Arconas also facilitated the procurement of customized barstools from Magis to complement the workstations.



Even the waste and recycling bins were carefully considered. Sleek Auweko waste and recycling bins with transparent side panels and custom decals are situated throughout the terminal.



“Arconas was the perfect choice as our furniture vendor to deliver this complex and unique scope and the result was magic.”

**– Denis Shatokin,
Munich Airports Group**

The response to the new terminal and seating has been overwhelmingly positive. Munich Airports Group, along with Arconas and Green Furniture Concept, successfully executed the original design concept with remarkable accuracy, utilizing readily available and easily customizable products.

Sandra Chaglassian, Director of Sales and Marketing for Green Furniture Concept described the collaboration with Arconas as a dream. “The amount of creativity and ingenuity we put into all the different configurations and colors was quite a challenge but to see it come to life and capture the essence of New Jersey was the ultimate accomplishment.”

Arconas is proud to have played a part in bringing such an innovative and immersive facility to life.

“We’re very proud to have contributed to the realization of such an innovative and immersive facility,” says Lynn Gordon, Vice President of Business Development for Arconas. “This bright and spacious new terminal will be a source of pride for Newark and its surrounding communities for decades to come.”

EWR



Bernù Aero Poly tandem seating
2623



inPowerflex 3 power modules
1244
ADA End-mount power modules
200



Auweko Temptation waste & recycling bins
180



Smarin Pebbles
161



Magis Stools
101



Green Furniture Concept
People Watcher Recliners
36



Green Furniture Concept
Seamless Tables
19



Green Furniture Concept
Community Benches
11



Green Furniture Concept
Column Benches
2

ARCONAS

Head Office

Arconas Corporation
5700 Keaton Crescent
Mississauga, Ontario
L5R 3H5 Canada

United States

Arconas Inc.
220 S. Elm Street
High Point, N. Carolina
27260 U.S.A.

Contact

Telephone: +1 905 272 0727
Toll Free: +1 800 387 9496
Email: info@arconas.com

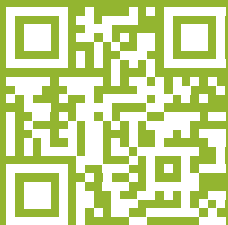
 [/arconas](#)

 [@arconascorp](#)

 [/arconas](#)



ISO 9001:2015 &
ISO 14001:2015 Certified



arconas.com