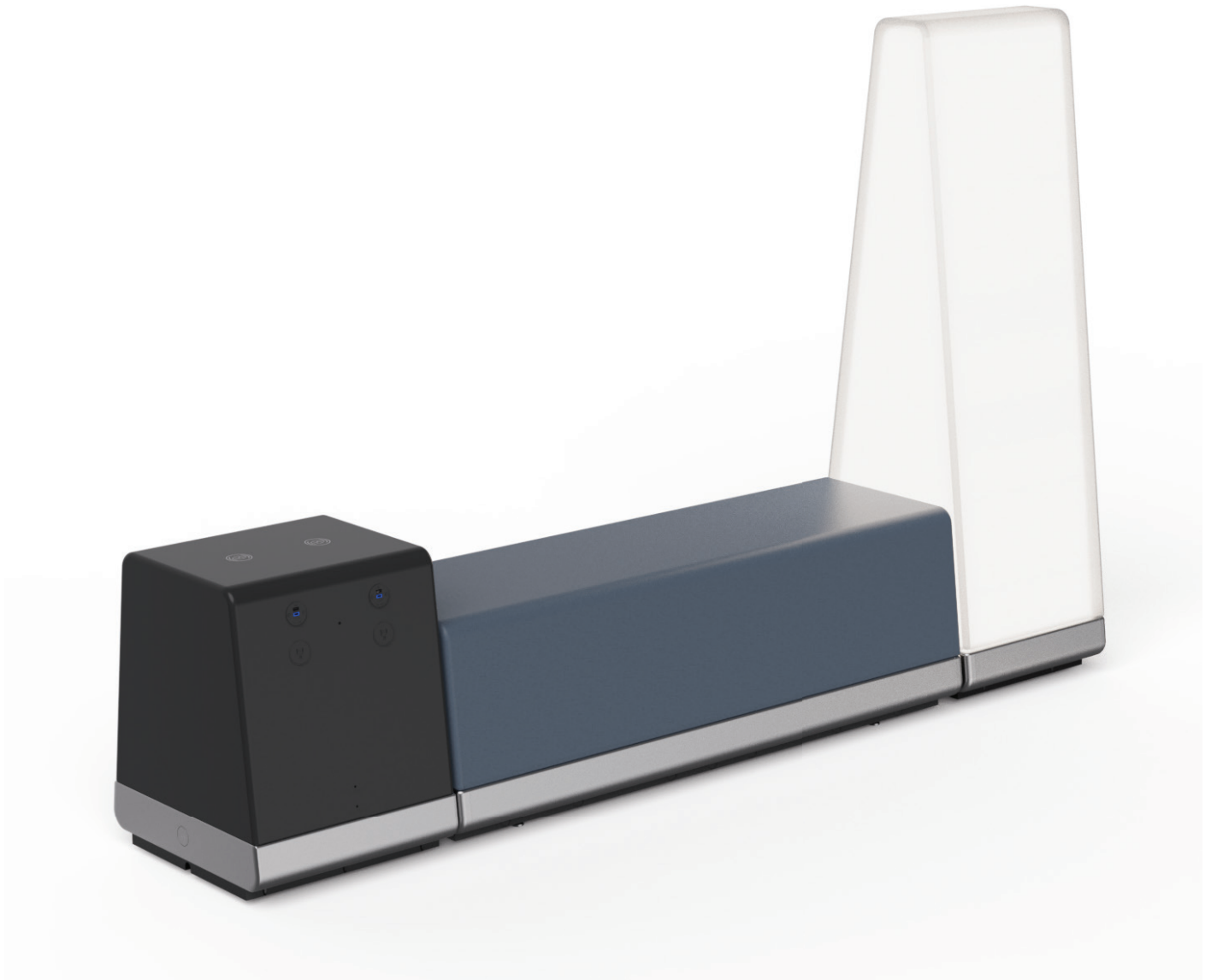


# Hopscotch

A series of innovative and streamlined modular components that inspire dynamic social interactions



Designed by Republic of II by IV

**ARCONAS**

arconas.com  
V062025

## Features

---

The Hopscotch Collection is an innovative, modular seating system that adds interest and character to it's environment, while promoting casual and playful interactions.

Hopscotch is comprised of 3 components: Hop Bench, Surge Power Station and Beacon Light Station.



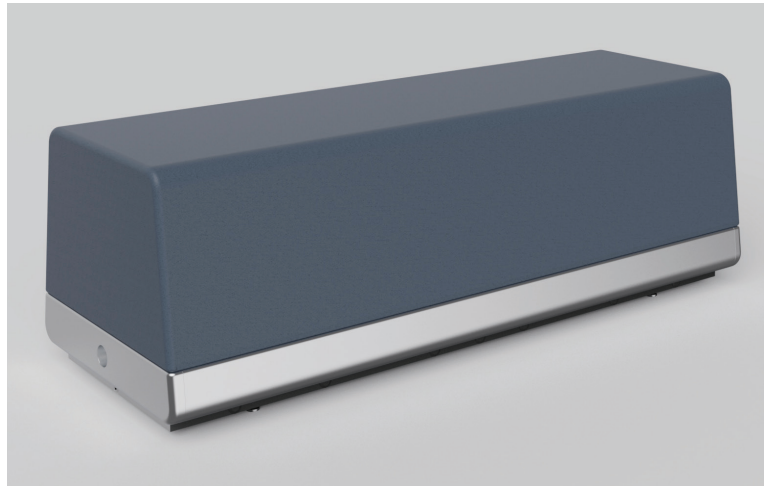
# Features

---

## Hop Bench

Hop Bench is characterized by an effortless, minimalistic and sculptural performance bench features plush padding for a comfortable seating experience and a robust structure to withstand high-impact spaces. Full upholstery hugs the bench's curves and seamlessly aligns with an aluminum base.

The base for all Hopscotch products is available in polished aluminum or matte black finish.



## Surge Power Station

Surge is a charging station for personal electronic devices and can also be used as a table or work surface when placed beside other seating.

The power station features four USB-A and four USB-C ports, four AC receptacles, and two wireless charging spots. All power options can be accessed on either side so users can charge their devices in whichever way is most convenient.

Using OE Electrical USB-A and USB-C components, the outlets can be easily swapped out if the power connection needs to be replaced or upgraded.



## Beacon Light Station

This triangular LED floor lamp was created to softly illuminate public spaces. The light also serves as a directional guidepost, enabling the seating system to be noticed from a distance. Beacon can be placed in a space by itself, or beside other furniture configurations to provide direction or symbolize a meeting point.



# Specifications

## CONSTRUCTION

### Hop Bench

Body: HR Foam over bonded fiber and plywood core  
Base: Extruded aluminum base with die-cast aluminum end caps  
Glides: Fitted with 4 adjustable glides

### Surge Power Station

Body: Solid surface in Deep Nocturne  
Base: Extruded aluminum base with die-cast aluminum end caps  
Glides: Fitted with 4 adjustable glides

### Beacon Light Station

Body: Roto-molded plastic  
Base: Extruded aluminum base with die-cast aluminum end caps  
Light source: LEDs  
Glides: Fitted with 4 adjustable glides

## FINISHES

### Hop Bench

Upholstery: Arconas Standard Fabrics  
Base: Bright polished aluminum or matte black

### Surge Power Station

Base: Bright polished aluminum or matte black

### Beacon Light Station

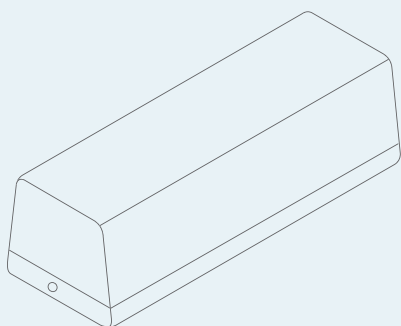
Base: Bright polished aluminum or matte black

## ASSEMBLY

Units are shipped fully assembled.

# Dimensions

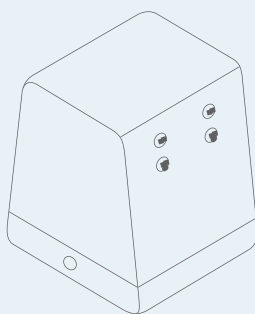
### HOP BENCH



#### HOPBENCH

W: 56" (1420 mm)  
D: 20.5" (520 mm)  
H: 18" (460 mm)  
SW: 14" (355 mm)

### SURGE POWER STATION



#### SURGETALL01 (NA) SURGETALL02 (EUROPE) SURGETALL03 (UK)

W: 18.5" (470 mm)  
D: 20.5" (520 mm)  
H: 24" (610mm)

### BEACON LIGHT STATION



#### BEACON01 (NA) BEACON02 (EUROPE) BEACON03 (UK)

W: 18.5" (470 mm)  
D: 20.5" (520 mm)  
H: 60" (1524 mm)

# ARCONAS

## Head Office

Arconas Corporation  
5700 Keaton Crescent  
Mississauga, Ontario  
L5R 3H5 Canada

## United States

Arconas Inc.  
220 S. Elm Street  
High Point, N. Carolina  
27260 U.S.A.

## Contact

Telephone: +1 905 272 0727  
Toll Free: +1 800 387 9496  
Email: [info@arconas.com](mailto:info@arconas.com)

 [/arconas](#)

 [@arconascorp](#)

 [/arconas](#)



Platinum  
member

ISO 9001:2015 &  
ISO 14001:2015 Certified



[arconas.com](http://arconas.com)