

AUWEKO®

# Dual Liquid Disposal Solution

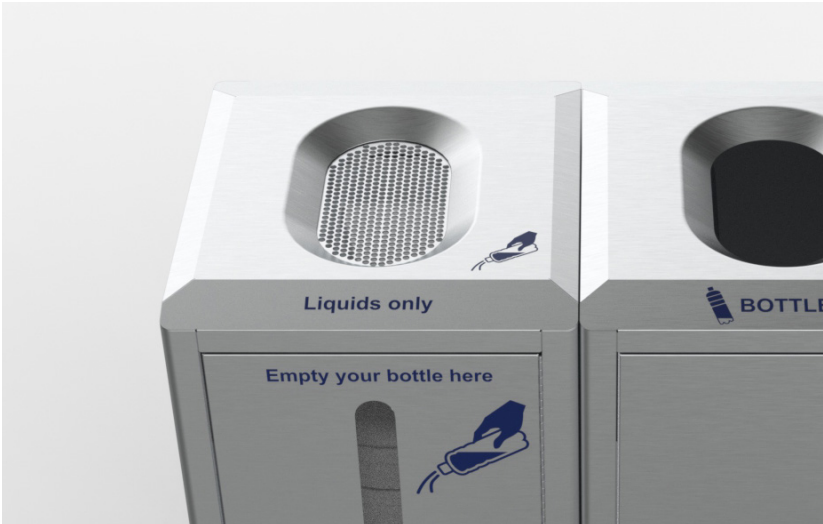
Provide passengers and airports with a seamless liquid and empty bottle disposal solution to ease the travel experience



**ARCONAS**

v071124

# Liquid Disposal Features



## Liquid Disposal Top Funnel

The oval aperture at the top includes a plastic funnel which channels the liquids (up to 50 Liters) into the removable polyethylene (PE) tank inside. The plastic funnel includes a strainer to prevent objects from falling into the tank container. The material used for the casing of the bin is non-flammable.



## Polyethylene Tank

The PE-tank container is suitable for temporary storage of beverages and is leak-proof. Draining is performed via a faucet which is attached to the tank container, meaning it does not have to be removed from the tank.



## Doors and Wheels

The bin-door is equipped with a snap-lock and not accessible for unauthorized personnel. The door is opened with a provided key and allows a quick and simple removal of the tank container or emptying via the attached faucet. The plastic funnel can be pulled out for cleaning. Wheels are a standard part of this bin to allow easy rolling to the next drainage point.

# Liquid Disposal Specifications and Dimensions

## CONSTRUCTION

**Body:** 1.4301/AISI 304 stainless steel

**Material Thickness:** 0.06" (1.5 mm)

**Inner Container:** Polyethylene (PE)

**Volume:** 13.2 gal (50 liters)

**Weight:** 121.3 lbs (ca. 55 kg)

**Slot Size:** 6.6" x 11.7" (167 mm x 296 mm)

## FEATURES

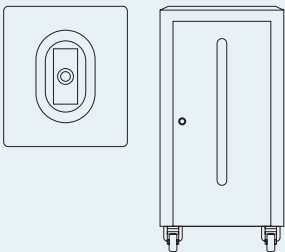
- Robust stainless steel body
- Body and lid feature blue liquid disposal graphic decals for clear visual signage
- Front door features easy-view window to monitor level of liquids
- Comes standard with lockable castors so bin can be rolled away and emptied

## FINISHES



Stainless Steel

## Liquid Disposal



### S-Liquid-1

W: 20" (510 mm)

D: 22.8" (580 mm)

H: 40.6" (1030 mm)

### Safety

The material used for the casing of the bin is non-flammable. The PE-tank container is suitable for temporary storage of beverages and is leak-proof. The collected liquid is drained from a faucet attached to the bottom of the tank. The bin-door is equipped with a snap lock and not accessible for unauthorized personnel.

### Function

The door is opened with a provided key and allows for quick and simple removal of the tank or easy access to the attached faucet for emptying. The plastic funnel can be pulled out for cleaning. Wheels are a standard part of this bin to allow easy rolling to the next drainage point.

# Empty Bottle Bin Specifications and Dimensions

## CONSTRUCTION

**Body:** 1.4301/AISI 304 stainless steel

**Material Thickness:** 0.06" (1.5 mm)

**Bag Holder:** Metal

**Drip Tray:** Galvanized Steel

**Volume:** 39.6 gal (150 litres)

**Weight:** 121.3 lbs (ca. 55 kg)

**Slot Size:** 6.6" x 11.7" (167 mm x 296 mm)

## FEATURES

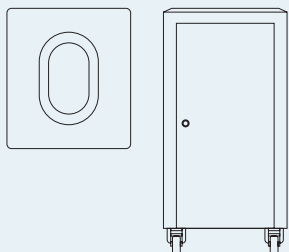
- Robust stainless steel body
- Body and lid feature blue liquid disposal graphic decals for clear visual signage

## FINISHES



Stainless Steel

## Empty Bottle Bin



### S150R

W: 20" (510 mm)

D: 22.8" (580 mm)

H: 40.6" (1030 mm)

### Safety

The material used for the casing of the bin is non-flammable. The bin-door is equipped with a snap lock and not accessible for unauthorized personnel.

### Function

The waste bag is attached to an extendible bag holder. The bin is emptied through the large front door. The door is opened with a provided key and allows for quick and simple removal of the bag.

# Liquid Disposal Cleaning Guide

## STAINLESS STEEL (uncoated)

As with all premium materials, stainless steel requires care and protection. We recommend to clean all brushed and polished surfaces of our bins with standard cleansers on a regular basis.

Use clean water and cloth to remove dirt. For more stubborn dirt or film deposits, use a mild commercial cleaner such as CLR, then wipe with clean water and dry.

**We recommend a regular periodic and adequate cleaning schedule of at least 2 times per week.**

### The following should be considered / avoided:

- Harsh chemical cleaners with acidic and abrasive contents. Prolonged contact can cause it to dry on the bin and eventually damage the bin surface
- Cleaners containing chlorine or salt are not suitable to clean stainless steel as they will cause severe deterioration
- Abrasive cleaner or cleaning aids are not suitable as the stainless steel will be scratched

## PE – POLYETHYLENE TANK (included in S-Liquid collector)

The tank is made of impact-resistant, food-safe, undyed polyethylene, usable in the food industry or chemical industry. Resistant to most acids and lyes, stable and strong material, fill level clearly visible and temperature resistant -20 to 50° C (-4 to 122 degrees Fahrenheit).

Hot water and soap should be used to wash the inside of the tank.

**The inner liners should be cleaned on a weekly basis or as needed.**

### The following should be considered:

- Be sure not to lift the tank while it is full of liquid
- The hose is to be connected to the spigot so the tank can be drained without lifting
- The liner contents should be emptied until the liquid is below the spigot level. At this point the tank can be lifted and drained completely and cleaned
- 10 L to 20 ML of soap scrub inside of bin with cloth or soft bristle scrubber. Rinse and drain completely (the more frequent the cleaning, the easier to prevent grime build up)



Tank includes a metal spigot with connecting hose for easier draining.

# ARCONAS

## Head Office

Arconas Corporation  
5700 Keaton Crescent  
Mississauga, Ontario  
L5R 3H5 Canada

## United States

Arconas Inc.  
220 S. Elm Street  
High Point, N. Carolina  
27260 U.S.A.

## Contact

Telephone: +1 905 272 0727  
Toll Free: +1 800 387 9496  
Email: [info@arconas.com](mailto:info@arconas.com)

 [/arconas](#)

 [@arconascorp](#)

 [/arconas](#)



ISO 9001:2015 &  
ISO 14001:2015 Certified

