

W-Series Disposal System

Optimize your airport's operations, enhance cleanliness and streamline efficiency with our liquid, bottle and waste disposal system.



W-Series Liquid Disposal System



Liquid & Waste Disposal

The W-Series Liquid & Waste Disposal unit has compartments for the liquid disposal and disposal of empty bottles and waste.



Liquid disposal has a grid allowing only liquid to pass through the metal funnel which channels the liquids (up to 20 gallons) into the removable Polyethylene (PE) tank inside.

Bottle and waste disposal have a chute in which waste is thrown into separate removable PE liners.

Components

Removable Tank

The removable tank sits on an angled dolly which facilitates cleaning and draining. The handle extends up for easy transportation and folds down when stored in the unit.



Waste Bins

Two Slim Jim bins hold 23 gallons.



Electric Drum Pump

For easy drainage of tank.

20 gallon capacity.

Drain time: 1.10 min

(not included)



Waste Disposal

The W-Series Waste Disposal unit is a dual compartment unit for organics, waste, paper and bottle disposal.



All units have a disposal chute in which waste is thrown into separate removable Polyethylene (PE) liners.



Decals

Standard decals are placed on all sides of unit.



Specifications

CONSTRUCTION

Top: Solid surface

Outside Body: Doors, side, and back panels in Phenolic double sided

Inside Body: Welded tubular steel frame powder coated

Liquid Strainer: Stainless steel

Liquid Tank: Antimicrobial tank, made of a UV stabilized PE with threaded cover

Tank Volume: 20 gallon

Tank Finish: Natural translucent and graduated for monitoring the level of liquid
Meets FDA standards

Overall Unit Weight: 510 lbs.

FEATURES

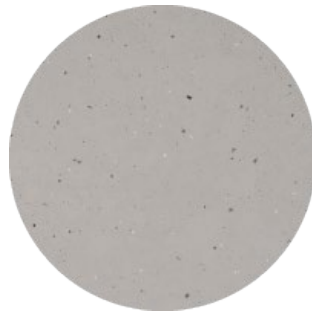
- Durable finishes to withstand high traffic usage
- Bold graphic decals on all sides for easy readability
- Tank comes standard in a dolly with lockable castors, allowing the bin to be rolled away and emptied
- Unit compartment with adjustable glides and bin guide to ensure alignment
- Removable Liquid Strainer for easy cleaning

Finishes

Top Surface | Silestone - Urban Crush

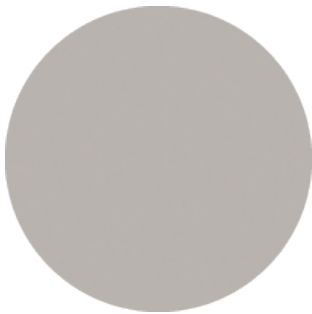


Lime Delight

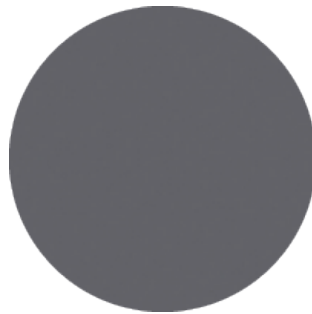


Concrete Pulse

Body Surface | Phenolic



Platinum



Storm

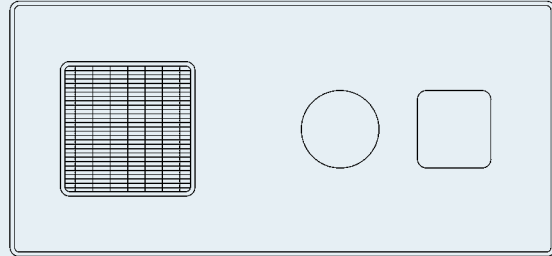
Configurations and Dimensions

LIQUID DISPOSAL UNIT



BODY

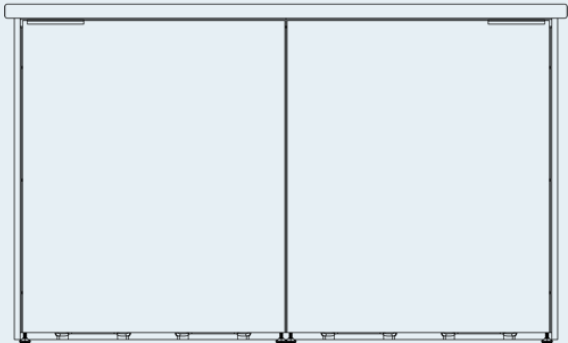
W: 59.75" (1517 mm)
D: 28" (712 mm)
H: 36" (915 mm)



TOP

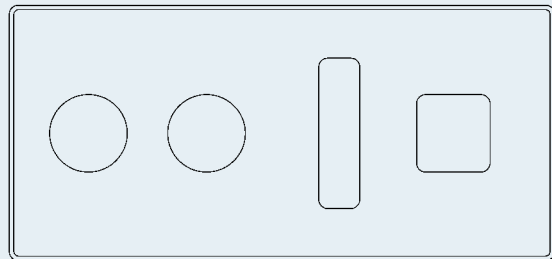
Strainer slot size: 14.75" x 14.75"
Bottle slot size: 9" D
Waste slot size: 8.5" x 8.5"

WASTE DISPOSAL UNIT



BODY

W: 59.75" (1517 mm)
D: 28" (712 mm)
H: 36" (915 mm)



TOP

Bottle slot size: 9" D
Organics slot size 9" D
Paper slot size: 4.5" x 16.5"
Waste slot size: 9" x 9"

ARCONAS

Head Office

Arconas Corporation
5700 Keaton Crescent
Mississauga, Ontario
L5R 3H5 Canada

United States

Arconas Inc.
220 S. Elm Street
High Point, N. Carolina
27260 U.S.A.

Contact

Telephone: +1 905 272 0727
Toll Free: +1 800 387 9496
Email: info@arconas.com

 [/arconas](#)

 [@arconascorp](#)

 [/arconas](#)



ISO 9001:2015 &
ISO 14001:2015 Certified



arconas.com