



## Morelli Bench

### Specifications

---

**Designer**  
Morelli Designers

## OVERVIEW



Composed of minimal parts, the Morelli Bench is a backless bench made from stained oakwood or perforated metal tops. The tops are supported by aluminum die-cast legs.

Offered in two lengths, the metal bench is available in 66" and 85" and the wood bench is only available in 66" width. Aluminum die-cast legs are painted in environmentally friendly electro-statically applied powder coating.

## CONSTRUCTION DETAILS



### Legs

Legs are cast aluminum, to the specification listed below, and fixed to the seat with sixteen 3/8"-16 x 1 in Stainless Steel Button head socket cap screws and sixteen 3/8" stainless steel split lock washers. The bench is designed to be floor mounted and therefore the legs must be bolted to the floor using appropriate hardware.



### Wooden Bench Top

The wooden bench top is made from ipe wood. The structure consists of four 48" x 5" x 1" wood slats, with slightly angled sides to match the angle on the die-cast aluminum legs. Each plank is inserted with four 3/8" - 16 threaded inserts (sixteen in total), that fastens to the legs.

Wood is an organic material whereby the grain and color of the wood may vary. Regular maintenance is required.



### Metal Bench Top

The metal bench top is made from two perforated 13 Ga Steel planks with 10 Ga steel plank reinforcements. Metal bench is available in 48"/122cm and 66"/167cm seat widths.

### Assembly

- Units are shipped fully assembled.



### Finish

- Aluminum Castings - Powder Coating
- Steel Parts - Powder coating



#### Aluminum Specifications

All aluminum A360 castings exhibit the following minimum properties:

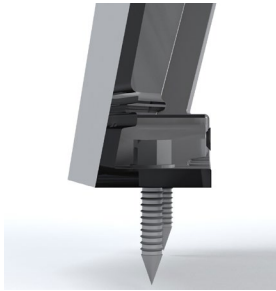
Tensile Strength:	47,000 PSI
Yield Strength:	23,100 PSI
Elongation:	3.5%
Brinell Hardness:	80 (500 kgf load 10 mm ball)

#### Floor Mounting Detail

The Morelli Bench must be floor mounted at all times.

It is recommended to use a 1/2" anchor bolt and metal washer.

The hardware cap is secured to the leg by two screws.



## PRODUCT CONFIGURATIONS

Depth of single units	21" (530 mm)
Height of seat	17 3/4" (450 mm)
Width of two seat units (seat only)	48" (1220 mm)
Width of three seat unit (seat only)	66 1/4" (1683 mm)
Overall width of two seat units (end to end)	67" (1702 mm)
Overall width of three seat unit (end to end)	85 3/4" (2178 mm)
Weight of 66" wood & metal unit	68 lbs / 31 kgs
Weight of 85" metal unit	90 lbs / 41 kgs